

Product datasheet

Anti-Casein Kinase 1 alpha antibody [AT2E2] ab88079

1 References 1 图像

概述

产品名称	Anti-Casein Kinase 1 alpha抗体[AT2E2]
描述	小鼠单克隆抗体[AT2E2] to Casein Kinase 1 alpha
经测试应用	适用于: WB, ELISA
种属反应性	与反应: Human
免疫原	Recombinant full length human protein Casein Kinase 1 alpha purified from E. coli (NP_001883)
阳性对照	HeLa and MCF7 cell lysates

性能

形式	Liquid
存放说明	Shipped at 4°C. Upon delivery aliquot. Store at -20°C or -80°C. Avoid freeze / thaw cycle.
存储溶液	Preservative: 0.1% Sodium Azide Constituents: PBS, pH 7.4
纯度	Protein G purified
克隆	单克隆
克隆编号	AT2E2
同种型	IgG2a
轻链类型	kappa

应用

Our [Abpromise guarantee](#) covers the use of **ab88079** in the following tested applications.

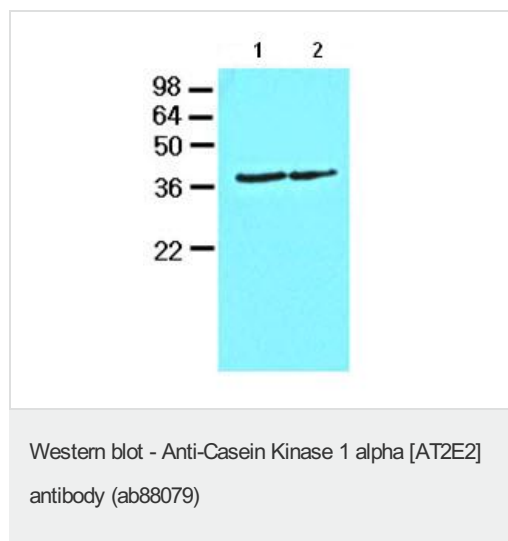
The application notes include recommended starting dilutions; optimal dilutions/concentrations should be determined by the end user.

应用	Ab评论	说明
WB		1/1000 - 1/2000. Predicted molecular weight: 39 kDa.
ELISA		Use at an assay dependent dilution.

靶标

功能	Casein kinases are operationally defined by their preferential utilization of acidic proteins such as caseins as substrates. It can phosphorylate a large number of proteins. Participates in Wnt signaling. Phosphorylates CTNNB1 at 'Ser-45'. May play a role in segregating chromosomes during mitosis.
序列相似性	Belongs to the protein kinase superfamily. CK1 Ser/Thr protein kinase family. Casein kinase I subfamily. Contains 1 protein kinase domain.
细胞定位	Cytoplasm. Cytoplasm > cytoskeleton > centrosome. Chromosome > centromere > kinetochore. Nucleus speckle. Localizes to the centrosome in interphase cells, and to kinetochore fibers during mitosis.

图片



All lanes : Anti-Casein Kinase 1 alpha antibody [AT2E2] (ab88079) at 1/1000 dilution

Lane 1 : HeLa cell lysate

Lane 2 : MCF7 cell lysate

Lysates/proteins at 40 µg per lane.

Secondary

HRP conjugated goat anti-mouse IgG
Developed using the ECL technique

Predicted band size : 39 kDa

Observed band size : 39 kDa

Please note: All products are "FOR RESEARCH USE ONLY AND ARE NOT INTENDED FOR DIAGNOSTIC OR THERAPEUTIC USE"

Our Abpromise to you: Quality guaranteed and expert technical support

- Replacement or refund for products not performing as stated on the datasheet
- Valid for 12 months from date of delivery
- Response to your inquiry within 24 hours
- We provide support in Chinese, English, French, German, Japanese and Spanish
- Extensive multi-media technical resources to help you
- We investigate all quality concerns to ensure our products perform to the highest standards

If the product does not perform as described on this datasheet, we will offer a refund or replacement. For full details of the Abpromise, please visit <http://www.abcam.cn/abpromise> or contact our technical team.

Terms and conditions

- Guarantee only valid for products bought direct from Abcam or one of our authorized distributors