


Product datasheet

Anti-Calpain 2 antibody ab88110

1 Abreviews 2 图像

概述

产品名称	Anti-Calpain 2抗体
描述	兔多克隆抗体to Calpain 2
经测试应用	适用于: ICC/IF, WB
种属反应性	与反应: Rat, Human 预测可用于: Mouse, Sheep, Rabbit, Cow, Pig, Monkey 
免疫原	Synthetic peptide conjugated to KLH derived from within residues 300 - 400 of Rat Calpain 2. 参阅Abcam的专有抗源政策(Peptide available as <a href="#">ab99036</a> .)
阳性对照	This antibody gave a positive signal in HeLa whole cell lysate as well as Rat Brain Tissue Lysate.

性能

形式	Liquid
存放说明	Shipped at 4°C. Store at +4°C short term (1-2 weeks). Upon delivery aliquot. Store at -20°C or -80°C. Avoid freeze / thaw cycle.
存储溶液	Preservative: 0.02% Sodium Azide Constituents: 1% BSA, PBS, pH 7.4
纯度	Immunogen affinity purified
克隆	多克隆
同种型	IgG

应用

Our [Abpromise guarantee](#) covers the use of **ab88110** in the following tested applications.

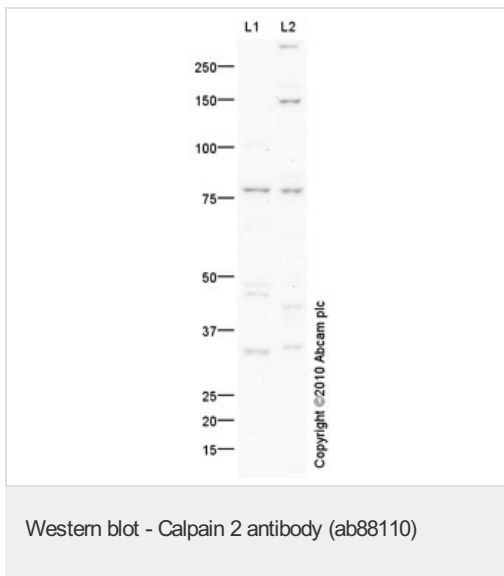
The application notes include recommended starting dilutions; optimal dilutions/concentrations should be determined by the end user.

应用	Ab评论	说明
ICC/IF		Use a concentration of 5 µg/ml.
WB		Use a concentration of 1 µg/ml. Detects a band of approximately 79 kDa (predicted molecular weight: 79 kDa).

## 靶标

<b>功能</b>	Calcium-regulated non-lysosomal thiol-protease which catalyze limited proteolysis of substrates involved in cytoskeletal remodeling and signal transduction.
<b>组织特异性</b>	Ubiquitous.
<b>序列相似性</b>	Belongs to the peptidase C2 family. Contains 1 calpain catalytic domain. Contains 3 EF-hand domains.
<b>细胞定位</b>	Cytoplasm. Cell membrane. Translocates to the plasma membrane upon Ca(2+) binding.

## 图片



**All lanes** : Anti-Calpain 2 antibody (ab88110)  
at 1 µg/ml

**Lane 1** : HeLa (Human epithelial carcinoma cell line) Whole Cell Lysate

**Lane 2** : Brain (Rat) Tissue Lysate

Lysates/proteins at 10 µg/ml per lane.

### Secondary

Goat polyclonal to Rabbit IgG - H&L - Pre-Adsorbed (HRP) at 1/3000 dilution  
Developed using the ECL technique

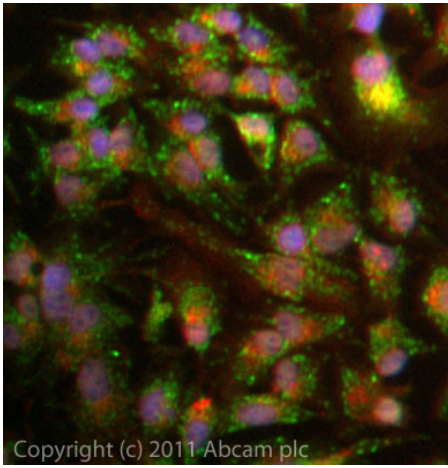
Performed under reducing conditions.

**Predicted band size** : 79 kDa

**Observed band size** : 79 kDa

**Additional bands at** : 150 kDa, 47 kDa, 85 kDa. We are unsure as to the identity of these extra bands.

**Exposure time** : 4 minutes



Immunocytochemistry/ Immunofluorescence - Anti-Calpain 2 antibody (ab88110)

ICC/IF image of ab88110 stained HepG2 cells. The cells were 4% PFA fixed (10 min) and then incubated in 1%BSA / 10% normal goat serum / 0.3M glycine in 0.1% PBS-Tween for 1h to permeabilise the cells and block non-specific protein-protein interactions. The cells were then incubated with the antibody (ab88110, 5µg/ml) overnight at +4°C. The secondary antibody (green) was ab96899 Dylight 488 goat anti-rabbit IgG (H+L) used at a 1/250 dilution for 1h. Alexa Fluor® 594 WGA was used to label plasma membranes (red) at a 1/200 dilution for 1h. DAPI was used to stain the cell nuclei (blue) at a concentration of 1.43µM.

**Please note:** All products are "FOR RESEARCH USE ONLY AND ARE NOT INTENDED FOR DIAGNOSTIC OR THERAPEUTIC USE"

### Our Abpromise to you: Quality guaranteed and expert technical support

- Replacement or refund for products not performing as stated on the datasheet
- Valid for 12 months from date of delivery
- Response to your inquiry within 24 hours
- We provide support in Chinese, English, French, German, Japanese and Spanish
- Extensive multi-media technical resources to help you
- We investigate all quality concerns to ensure our products perform to the highest standards

If the product does not perform as described on this datasheet, we will offer a refund or replacement. For full details of the Abpromise, please visit <http://www.abcam.cn/abpromise> or contact our technical team.

### Terms and conditions

- Guarantee only valid for products bought direct from Abcam or one of our authorized distributors