

Product datasheet

Anti-Calcium-independent Phospholipase A2 antibody ab104416

3 图像

概述

产品名称	Anti-Calcium-independent Phospholipase A2抗体
描述	兔多克隆抗体 to Calcium-independent Phospholipase A2
宿主	Rabbit
特异性	Reactive against mammalian transfected lysate.
经测试应用	适用于: WB
种属反应性	与反应: Mouse, Human
免疫原	Full length Human protein (NP_001004426.1)
阳性对照	Human kidney tissue lysate, Mouse kidney tissue lysate, Transfected 293T cell lysate

性能

形式	Liquid
存放说明	Shipped at 4°C. Upon delivery aliquot. Store at -20°C or -80°C. Avoid freeze / thaw cycle.
存储溶液	Preservative: None Constituents: 1X PBS, pH 7.2
纯度	Protein A purified
克隆	多克隆
同种型	IgG

应用

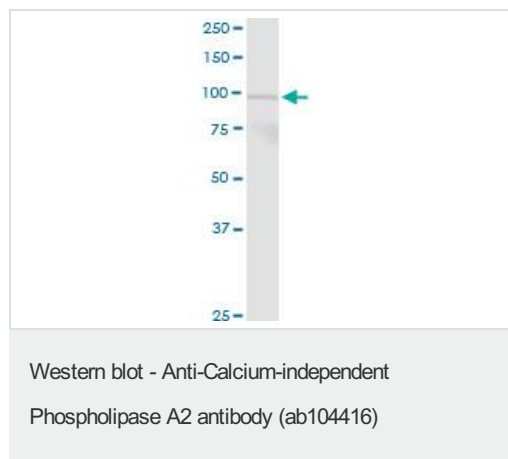
Our [Abpromise guarantee](#) covers the use of **ab104416** in the following tested applications. The application notes include recommended starting dilutions; optimal dilutions/concentrations should be determined by the end user.

应用	Ab评论	说明
WB		Use a concentration of 1 µg/ml. Predicted molecular weight: 90 kDa.

靶标

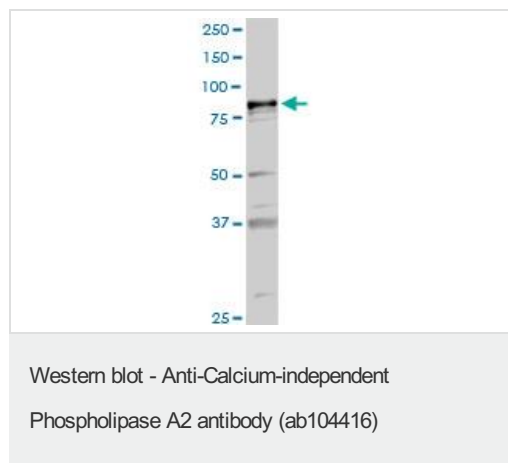
功能	Catalyzes the release of fatty acids from phospholipids. It has been implicated in normal phospholipid remodeling, nitric oxide-induced or vasopressin-induced arachidonic acid release and in leukotriene and prostaglandin production. May participate in fas mediated apoptosis and in regulating transmembrane ion flux in glucose-stimulated B-cells. Has a role in cardiolipin (CL) deacylation. Required for both speed and directionality of monocyte MCP1/CCL2-induced chemotaxis through regulation of F-actin polymerization at the pseudopods. Isoform ankyrin-iPLA2-1 and isoform ankyrin-iPLA2-2, which lack the catalytic domain, are probably involved in the negative regulation of iPLA2 activity.
组织特异性	Four different transcripts were found to be expressed in a distinct tissue distribution.
疾病相关	Neurodegeneration with brain iron accumulation 2B Neurodegeneration with brain iron accumulation 2A Parkinson disease 14
序列相似性	Contains 7 ANK repeats. Contains 1 patatin domain.
细胞定位	Cytoplasm and Membrane. Recruited to the membrane-enriched pseudopod upon MCP1/CCL2 stimulation in monocytes.
形式	The isoform LH-iPLA2 is located at the membrane. The isoform SH-iPLA2 is cytoplasmic.

图片



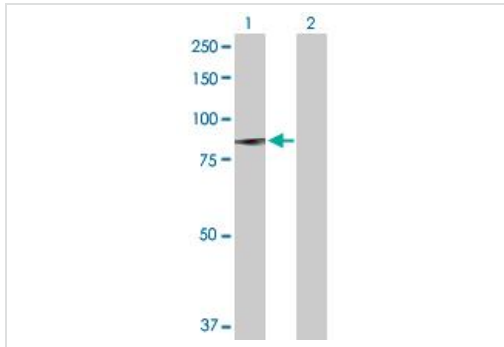
Anti-Calcium-independent Phospholipase A2 antibody (ab104416) at 1 µg/ml + Human kidney tissue lysate at 50 µg

Predicted band size: 90 kDa



Anti-Calcium-independent Phospholipase A2 antibody (ab104416) at 1 µg/ml + Mouse kidney tissue lysate at 50 µg

Predicted band size: 90 kDa



Western blot - Anti-Calcium-independent
Phospholipase A2 antibody (ab104416)

All lanes : Anti-Calcium-independent
Phospholipase A2 antibody (ab104416) at 1
µg/ml

Lane 1 : Calcium-independent
Phospholipase A2 transfected 293T lysate

Lane 2 : Non-transfected 293T lysate

Lysates/proteins at 25 µg per lane.

Predicted band size: 90 kDa

Observed band size: 84 kDa

Please note: All products are "FOR RESEARCH USE ONLY AND ARE NOT INTENDED FOR DIAGNOSTIC OR THERAPEUTIC USE"

Our Abpromise to you: Quality guaranteed and expert technical support

- Replacement or refund for products not performing as stated on the datasheet
- Valid for 12 months from date of delivery
- Response to your inquiry within 24 hours
- We provide support in Chinese, English, French, German, Japanese and Spanish
- Extensive multi-media technical resources to help you
- We investigate all quality concerns to ensure our products perform to the highest standards

If the product does not perform as described on this datasheet, we will offer a refund or replacement. For full details of the Abpromise, please visit <http://www.abcam.cn/abpromise> or contact our technical team.

Terms and conditions

- Guarantee only valid for products bought direct from Abcam or one of our authorized distributors