


Product datasheet

Anti-CSRP1 antibody ab85810

1 图像

概述

产品名称	Anti-CSRP1抗体
描述	兔多克隆抗体to CSRP1
宿主	Rabbit
经测试应用	适用于: WB
种属反应性	与反应: Human 预测可用于: Mouse, Rat, Chicken, Cow, Orangutan 
免疫原	Synthetic peptide conjugated to KLH derived from within residues 1 - 100 of Human CSRP1. 参阅Abcam的专有抗源政策
阳性对照	This antibody gave a positive signal in Hela whole cell lysate.

性能

形式	Liquid
存放说明	Shipped at 4°C. Store at +4°C short term (1-2 weeks). Upon delivery aliquot. Store at -20°C or -80°C. Avoid freeze / thaw cycle.
存储溶液	Preservative: 0.02% Sodium Azide Constituents: 1% BSA, PBS, pH 7.4
纯度	Immunogen affinity purified
克隆	多克隆
同种型	IgG

应用

Our [Abpromise guarantee](#) covers the use of **ab85810** in the following tested applications.

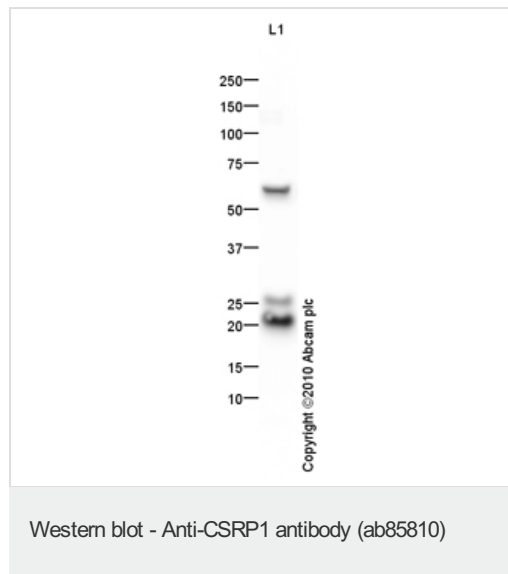
The application notes include recommended starting dilutions; optimal dilutions/concentrations should be determined by the end user.

应用	Ab评论	说明
WB		Use a concentration of 1 µg/ml. Detects a band of approximately 21 kDa (predicted molecular weight: 21 kDa).

靶标

功能	Could play a role in neuronal development.
序列相似性	Contains 2 LIM zinc-binding domains.
细胞定位	Nucleus.

图片



Anti-CSRP1 antibody (ab85810) at 1 µg/ml +
HeLa (Human epithelial carcinoma cell line)
Whole Cell Lysate at 10 µg

Secondary

Goat polyclonal to Rabbit IgG - H&L - Pre-
Adsorbed (HRP) at 1/3000 dilution

Developed using the ECL technique.

Performed under reducing conditions.

Predicted band size: 21 kDa

Observed band size: 21 kDa

Additional bands at: 26 kDa, 61 kDa. We
are unsure as to the identity of these extra
bands.

Exposure time: 8 minutes

Please note: All products are "FOR RESEARCH USE ONLY AND ARE NOT INTENDED FOR DIAGNOSTIC OR THERAPEUTIC USE"

Our Abpromise to you: Quality guaranteed and expert technical support

- Replacement or refund for products not performing as stated on the datasheet
- Valid for 12 months from date of delivery
- Response to your inquiry within 24 hours
- We provide support in Chinese, English, French, German, Japanese and Spanish
- Extensive multi-media technical resources to help you
- We investigate all quality concerns to ensure our products perform to the highest standards

If the product does not perform as described on this datasheet, we will offer a refund or replacement. For full details of the Abpromise, please visit <http://www.abcam.cn/abpromise> or contact our technical team.

Terms and conditions

- Guarantee only valid for products bought direct from Abcam or one of our authorized distributors