

Product datasheet

Anti-CSPP1 antibody ab102755

2 图像

概述

产品名称	Anti-CSPP1抗体
描述	兔多克隆抗体to CSPP1
宿主	Rabbit
经测试应用	适用于: WB, IHC-P
种属反应性	与反应: Human
免疫原	KLH conjugated synthetic peptide corresponding to a region within N terminal amino acids 276-306 of Human CSPP1.
阳性对照	HL-60 and Jurkat cell line lysates; Human testis tissue

性能

形式	Liquid
存放说明	Shipped at 4°C. Store at 4°C (up to 6 months). Store at -20°C long term.
存储溶液	Preservative: 0.09% Sodium Azide Constituents: PBS
纯度	Immunogen affinity purified
纯化说明	ab102755 is purified through a protein A column, followed by peptide affinity purification.
克隆	多克隆
同种型	IgG

应用

Our [Abpromise guarantee](#) covers the use of **ab102755** in the following tested applications.

The application notes include recommended starting dilutions; optimal dilutions/concentrations should be determined by the end user.

应用	Ab评论	说明
WB		1/100 - 1/500. Predicted molecular weight: Isoform1, 142 ; Isoform 2, 101 kDa.

应用	Ab评论	说明
IHC-P		1/50 - 1/100. Perform heat mediated antigen retrieval with citrate buffer pH 6 before commencing with IHC staining protocol.

靶标

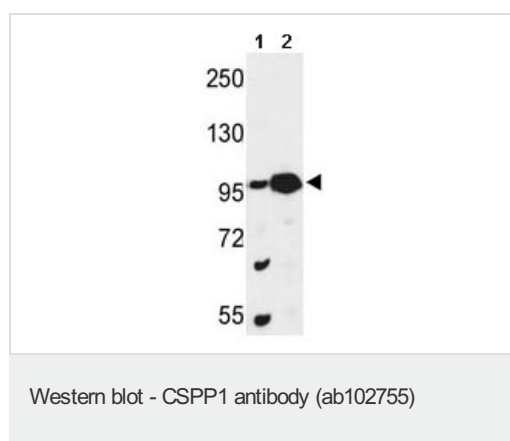
相关性

CSPP1 interacts with centrosomes and microtubules and may play a role in cell-cycle-dependent microtubule organization.

细胞定位

Cytoplasm; cytoskeleton; centrosome. Cytoplasm; cytoskeleton; spindle. Note: Associated with mitotic spindles.

图片



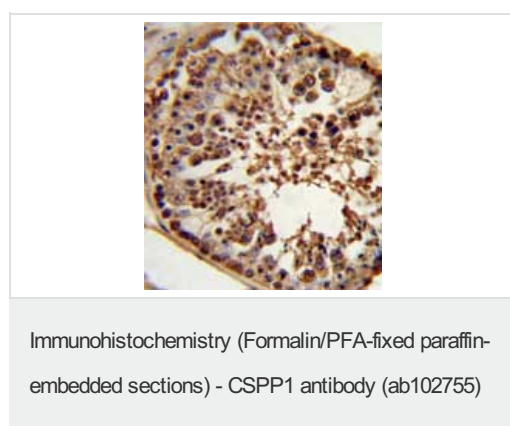
All lanes : Anti-CSPP1 antibody (ab102755)
at 1/100 dilution

Lane 1 : HL-60 cell lysate

Lane 2 : Jurkat cell lysate

Lysates/proteins at 35 µg per lane.

Predicted band size: Isoform1, 142 ; Isoform 2, 101 kDa



ab102755, at 1/50 dilution, staining CSPP1 in formalin-fixed, paraffin-embedded Human testis tissue using a peroxidase-conjugated secondary antibody and DAB staining.

Please note: All products are "FOR RESEARCH USE ONLY AND ARE NOT INTENDED FOR DIAGNOSTIC OR THERAPEUTIC USE"

Our Abpromise to you: Quality guaranteed and expert technical support

- Replacement or refund for products not performing as stated on the datasheet

- Valid for 12 months from date of delivery
- Response to your inquiry within 24 hours

- We provide support in Chinese, English, French, German, Japanese and Spanish
- Extensive multi-media technical resources to help you
- We investigate all quality concerns to ensure our products perform to the highest standards

If the product does not perform as described on this datasheet, we will offer a refund or replacement. For full details of the Abpromise, please visit <http://www.abcam.cn/abpromise> or contact our technical team.

Terms and conditions

- Guarantee only valid for products bought direct from Abcam or one of our authorized distributors