

Product datasheet

Anti-CROCC antibody ab121694

1 图像

概述

产品名称	Anti-CROCC抗体
描述	兔多克隆抗体to CROCC
宿主	Rabbit
经测试应用	适用于: IHC-P
种属反应性	与反应: Human
免疫原	antigen sequence: LEAEKEELSE EIALQQERD EGLLLAESEK QQALSLKESE KTALSEKLMG TRHSLATISL EMERQKRDAQ SRQEQRSTV NALTSELRLD R, corresponding to amino acids 1031-1121 of Human CROCC Run BLAST with ExPASy Run BLAST with NCBI
阳性对照	Human fallopian tube tissue

性能

形式	Liquid
存放说明	Shipped at 4°C. Upon delivery aliquot and store at -20°C. Avoid repeated freeze / thaw cycles.
存储溶液	pH: 7.20 Preservative: 0.02% Sodium azide Constituents: 59% PBS, 40% Glycerol
纯度	Immunogen affinity purified
克隆	多克隆
同种型	IgG

应用

Our [Abpromise guarantee](#) covers the use of **ab121694** in the following tested applications.

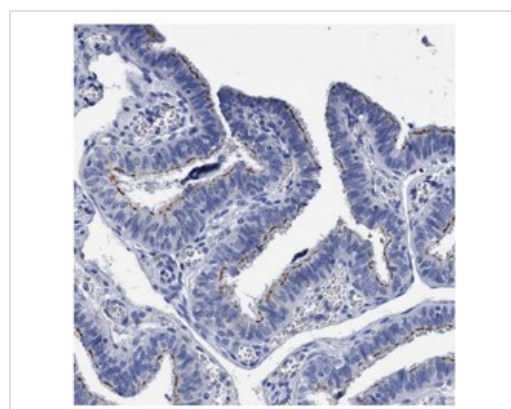
The application notes include recommended starting dilutions; optimal dilutions/concentrations should be determined by the end user.

应用	Ab 评论	说明
IHC-P		1/2500 - 1/5000. Perform heat mediated antigen retrieval with citrate buffer pH 6 before commencing with IHC staining protocol. Use buffer at pH 6 for antigen retrieval.

靶标

功能	Major structural component of the ciliary rootlet, a cytoskeletal-like structure in ciliated cells which originates from the basal body at the proximal end of a cilium and extends proximally toward the cell nucleus. Contributes to centrosome cohesion before mitosis.
序列相似性	Belongs to the rootletin family.
翻译后修饰	Phosphorylated by NEK2 which may regulate its association with centrosomes. Phosphorylated upon DNA damage, probably by ATM or ATR.
细胞定位	Cytoplasm > cytoskeleton > centrosome > centriole. In ciliated cells, associated with ciliary rootlets. In non-ciliated cells, localized between, around and at the proximal ends of the centrioles. Dissociates from the centrioles at the onset of mitosis and reassociates with them at anaphase.

图片



Immunohistochemical staining of paraffin embedded Human fallopian tube tissue, using 1/4000 ab121694.

Immunohistochemistry (Formalin/PFA-fixed paraffin-embedded sections) - Anti-CROCC antibody (ab121694)

Please note: All products are "FOR RESEARCH USE ONLY AND ARE NOT INTENDED FOR DIAGNOSTIC OR THERAPEUTIC USE"

Our Abpromise to you: Quality guaranteed and expert technical support

- Replacement or refund for products not performing as stated on the datasheet
- Valid for 12 months from date of delivery
- Response to your inquiry within 24 hours

- We provide support in Chinese, English, French, German, Japanese and Spanish
- Extensive multi-media technical resources to help you
- We investigate all quality concerns to ensure our products perform to the highest standards

If the product does not perform as described on this datasheet, we will offer a refund or replacement. For full details of the Abpromise, please visit <http://www.abcam.cn/abpromise> or contact our technical team.

Terms and conditions

- Guarantee only valid for products bought direct from Abcam or one of our authorized distributors