

Product datasheet

Anti-CRMP1 antibody ab36199

3 图像

概述

产品名称	Anti-CRMP1抗体
描述	兔多克隆抗体to CRMP1
宿主	Rabbit
特异性	No cross reactivity was detected with CRMP2, CRMP3, CRMP4 or CRMP5.
经测试应用	适用于: ICC/IF, WB, IHC-Fr, IHC-P
种属反应性	与反应: Mouse, Rat, Human
免疫原	A 15 residue synthetic peptide derived from C-terminal domain of human collapsing-response mediator.

性能

形式	Liquid
存放说明	Shipped at 4°C. Store at +4°C short term (1-2 weeks). Upon delivery aliquot. Store at -20°C long term.
存储溶液	Preservative: None Constituents: Whole serum
纯度	Whole antiserum
克隆	多克隆
同种型	IgG

应用

Our [Abpromise guarantee](#) covers the use of **ab36199** in the following tested applications.

The application notes include recommended starting dilutions; optimal dilutions/concentrations should be determined by the end user.

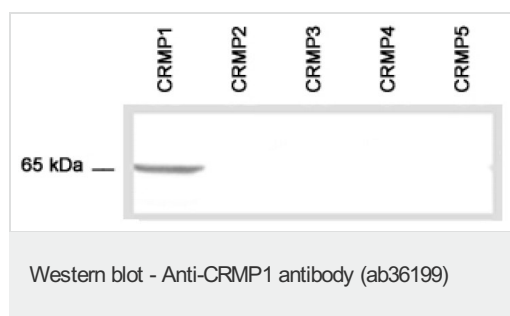
应用	Ab评论	说明
ICC/IF		1/1000.

应用	Ab评论	说明
WB		1/2000. Detects a band of approximately 65 kDa (predicted molecular weight: 62 kDa). Can be blocked with CRMP1 peptide (ab196857) .
IHC-Fr		1/500.
IHC-P		Use at an assay dependent concentration.

靶标

功能	Necessary for signaling by class 3 semaphorins and subsequent remodeling of the cytoskeleton. Plays a role in axon guidance, invasive growth and cell migration.
组织特异性	Brain.
序列相似性	Belongs to the DHOase family. Hydantoinase/dihydropyrimidinase subfamily.
细胞定位	Cytoplasm. Cytoplasm > cytoskeleton > centrosome. Cytoplasm > cytoskeleton > spindle. Associated with centrosomes and the mitotic spindle during metaphase.

图片



All lanes : Anti-CRMP1 antibody (ab36199)

Lane 1 : E.coli lysate transformed with cDNA of human CRMP1.

Lane 2 : E.coli lysate transformed with cDNA of human CRMP2.

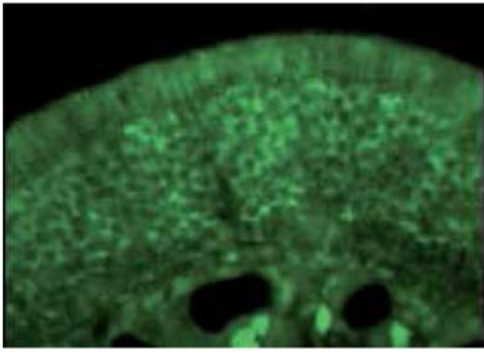
Lane 3 : E.coli lysate transformed with cDNA of human CRMP3.

Lane 4 : E.coli lysate transformed with cDNA of human CRMP4.

Lane 5 : E.coli lysate transformed with cDNA of human CRMP5.

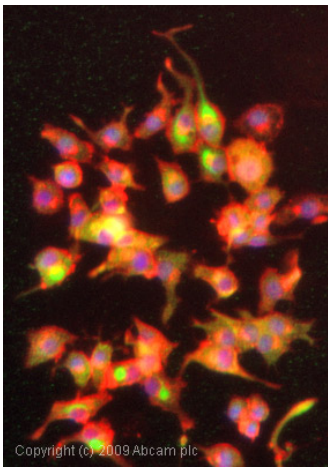
Predicted band size: 62 kDa

Observed band size: 65 kDa



Immunohistochemistry (Formalin/PFA-fixed paraffin-embedded sections) - Anti-CRMP1 antibody (ab36199)

Ab36199 staining human CRMP1 in olfactory receptor neurons within the olfactory mucosa by immunohistochemistry.



Immunocytochemistry/ Immunofluorescence - Anti-CRMP1 antibody (ab36199)

ICC/IF image of ab36199 stained PC12 cells. The cells were 4% formaldehyde fixed (10 min) and then incubated in 1%BSA / 10% normal goat serum / 0.3M glycine in 0.1% PBS-Tween for 1h to permeabilise the cells and block non-specific protein-protein interactions. The cells were then incubated with the antibody (ab36199, 1/1000 dilution) overnight at +4°C. The secondary antibody (green) was Alexa Fluor® 488 goat anti-rabbit IgG (H+L) used at a 1/1000 dilution for 1h. Alexa Fluor® 594 WGA was used to label plasma membranes (red) at a 1/200 dilution for 1h. DAPI was used to stain the cell nuclei (blue) at a concentration of 1.43µM.

Please note: All products are "FOR RESEARCH USE ONLY AND ARE NOT INTENDED FOR DIAGNOSTIC OR THERAPEUTIC USE"

Our Abpromise to you: Quality guaranteed and expert technical support

- Replacement or refund for products not performing as stated on the datasheet
- Valid for 12 months from date of delivery
- Response to your inquiry within 24 hours
- We provide support in Chinese, English, French, German, Japanese and Spanish
- Extensive multi-media technical resources to help you
- We investigate all quality concerns to ensure our products perform to the highest standards

If the product does not perform as described on this datasheet, we will offer a refund or replacement. For full details of the Abpromise, please visit <http://www.abcam.cn/abpromise> or contact our technical team.

Terms and conditions

- Guarantee only valid for products bought direct from Abcam or one of our authorized distributors