

Product datasheet

Anti-CPT1A antibody ab115269

3 图像

概述

产品名称	Anti-CPT1A抗体
描述	山羊多克隆抗体to CPT1A
经测试应用	适用于: WB, ELISA, IHC-P
种属反应性	与反应: Human
免疫原	Synthetic peptide corresponding to amino acids 621-634 (C-DPAQTVEQRLKLFK) from an internal region of Human CPT1A (NP_001027017.1). Run BLAST with Run BLAST with
阳性对照	Human liver lysate; Human heart and kidney tissues

性能

形式	Liquid
存放说明	Shipped at 4°C. Upon delivery aliquot and store at -20°C. Avoid freeze / thaw cycles.
存储溶液	Preservative: 0.02% Sodium azide Constituents: 99% Tris buffered saline, 0.5% BSA
纯度	Immunogen affinity purified
克隆	多克隆
同种型	IgG

应用

Our [Abpromise guarantee](#) covers the use of **ab115269** in the following tested applications.

The application notes include recommended starting dilutions; optimal dilutions/concentrations should be determined by the end user.

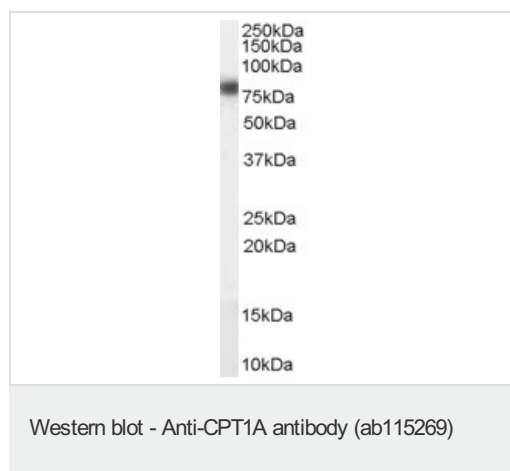
应用	Ab评论	说明
WB		Use a concentration of 0.1 - 0.3 µg/ml. Predicted molecular weight: 88 kDa.
ELISA		1/128000.

应用	Ab评论	说明
IHC-P		Use a concentration of 4 µg/ml. Perform heat mediated antigen retrieval with citrate buffer pH 6 before commencing with IHC staining protocol.

靶标

组织特异性	Strong expression in kidney and heart, and lower in liver and skeletal muscle.
通路	Lipid metabolism; fatty acid beta-oxidation.
疾病相关	Defects in CPT1A are the cause of carnitine palmitoyltransferase 1A deficiency (CPT1AD) [MIM:255120]; also known as CPT-I deficiency or CPT1A deficiency. CPT1AD is a rare autosomal recessive metabolic disorder of long-chain fatty acid oxidation characterized by severe episodes of hypoketotic hypoglycemia usually occurring after fasting or illness. Onset is in infancy or early childhood.
序列相似性	Belongs to the carnitine/choline acetyltransferase family.
细胞定位	Mitochondrion outer membrane.

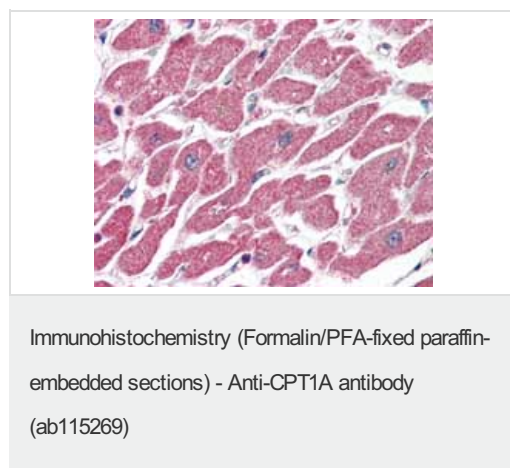
图片



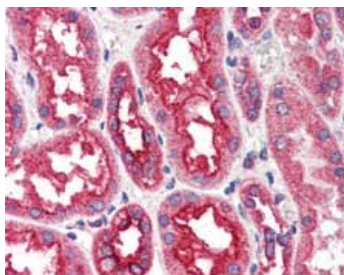
Anti-CPT1A antibody (ab115269) at 0.1 µg/ml
+ Human liver lysate (in RIPA buffer) at 35 µg
Developed using the ECL technique

Predicted band size : 88 kDa

Exposure time : 1 hour



ab115269, at 4 µg/ml, staining CPT1A in formalin fixed, paraffin embedded Human heart tissue by Immunohistochemistry. After incubation with the primary antibody, slides were incubated with biotinylated anti-goat IgG secondary antibody, followed by alkaline phosphatase-streptavidin and chromogen.



Immunohistochemistry (Formalin/PFA-fixed paraffin-embedded sections) - Anti-CPT1A antibody (ab115269)

ab115269, at 4 ug/ml, staining CPT1A in formalin fixed, paraffin embedded Human kidney tissue by Immunohistochemistry. After incubation with the primary antibody, slides were incubated with biotinylated anti-goat IgG secondary antibody, followed by alkaline phosphatase-streptavidin and chromogen.

Please note: All products are "FOR RESEARCH USE ONLY AND ARE NOT INTENDED FOR DIAGNOSTIC OR THERAPEUTIC USE"

Our Abpromise to you: Quality guaranteed and expert technical support

- Replacement or refund for products not performing as stated on the datasheet
- Valid for 12 months from date of delivery
- Response to your inquiry within 24 hours
- We provide support in Chinese, English, French, German, Japanese and Spanish
- Extensive multi-media technical resources to help you
- We investigate all quality concerns to ensure our products perform to the highest standards

If the product does not perform as described on this datasheet, we will offer a refund or replacement. For full details of the Abpromise, please visit <http://www.abcam.cn/abpromise> or contact our technical team.

Terms and conditions

- Guarantee only valid for products bought direct from Abcam or one of our authorized distributors