


Product datasheet

Anti-CPSF2 antibody ab100807

2 图像

概述

产品名称	Anti-CPSF2抗体
描述	兔多克隆抗体to CPSF2
宿主	Rabbit
经测试应用	适用于: IHC-P
种属反应性	与反应: Mouse, Human 预测可用于: Rat, Rabbit, Horse, Chicken, Guinea pig, Cow, Dog, Turkey, Chimpanzee, Rhesus monkey, Gorilla, Xenopus tropicalis 
免疫原	Other Immunogen Type corresponding to Human CPSF2 aa 450-500 (internal sequence). Database link: NP_059133.1
阳性对照	Human Anaplastic Thyroid Carcinoma, Human Breast Carcinoma, Human Linitis Plastica Stomach Cancer, Human Ovarian Carcinoma, Human Testicular Seminoma.

性能

形式	Liquid
存放说明	Shipped at 4°C. Upon delivery aliquot and store at -20°C. Avoid freeze / thaw cycles.
存储溶液	Preservative: 0.09% Sodium Azide Constituents: 0.1% BSA, Tris buffered saline
纯度	Immunogen affinity purified
克隆	多克隆
同种型	IgG

应用

Our [Abpromise guarantee](#) covers the use of **ab100807** in the following tested applications.

The application notes include recommended starting dilutions; optimal dilutions/concentrations should be determined by the end user.

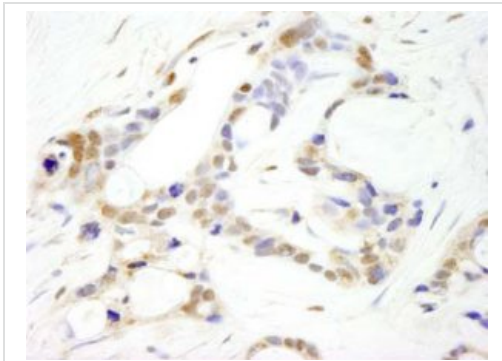
应用	Ab评论	说明
IHC-P		1/100 - 1/500. Epitope exposure with citrate buffer will enhance staining.

靶标

相关性 CPSF2 belongs to the RNA-metabolizing metallo-beta-lactamase-like family, CPSF2/YSH1 subfamily. It is a component of the cleavage and polyadenylation specificity factor (CPSF) complex that plays a key role in pre-mRNA 3 prime-end formation, recognizing the AAUAAA signal sequence and interacting with poly(A) polymerase and other factors to bring about cleavage and poly(A) addition. A poly(A) tail is added to eukaryotic mRNA precursors after tightly coupled cleavage and polyadenylation reactions at their 3-prime ends.

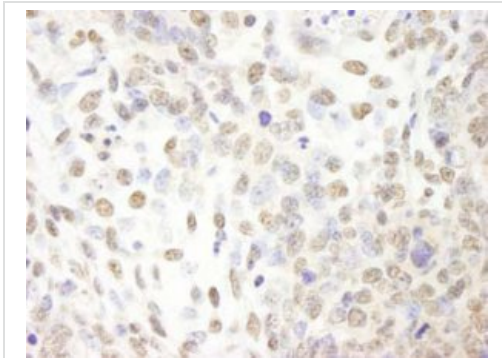
细胞定位 Nuclear

图片



ab100807, at 1/250 dilution, staining CPSF2 in Human ovarian carcinoma by immunohistochemistry.

Immunohistochemistry (Formalin/PFA-fixed paraffin-embedded sections) - CPSF2 antibody (ab100807)



ab100807, at 1/250 dilution, staining CPSF2 in Mouse teratoma by immunohistochemistry.

Immunohistochemistry (Formalin/PFA-fixed paraffin-embedded sections) - CPSF2 antibody (ab100807)

Please note: All products are "FOR RESEARCH USE ONLY AND ARE NOT INTENDED FOR DIAGNOSTIC OR THERAPEUTIC USE"

Our Abpromise to you: Quality guaranteed and expert technical support

- Replacement or refund for products not performing as stated on the datasheet
- Valid for 12 months from date of delivery
- Response to your inquiry within 24 hours

- We provide support in Chinese, English, French, German, Japanese and Spanish
- Extensive multi-media technical resources to help you
- We investigate all quality concerns to ensure our products perform to the highest standards

If the product does not perform as described on this datasheet, we will offer a refund or replacement. For full details of the Abpromise, please visit <http://www.abcam.cn/abpromise> or contact our technical team.

Terms and conditions

- Guarantee only valid for products bought direct from Abcam or one of our authorized distributors