

## Product datasheet

# Anti-COL8A2 antibody ab112110

★★★★★ 1 Abreviews 2 图像

### 概述

产品名称	Anti-COL8A2抗体
描述	兔多克隆抗体to COL8A2
宿主	Rabbit
经测试应用	适用于: IHC-Fr, WB
种属反应性	与反应: Mouse, Human 预测可用于: Rat, Rabbit, Goat, Horse, Chicken, Guinea pig, Cow, Cat, Dog, Drosophila melanogaster, Zebrafish
免疫原	Synthetic peptide corresponding to a region within internal sequence amino acids 285-334 (AAGLPGPQGP SGAKGEPGTR GPPGLIGPTG YGMPGLPGPK GDRGPAGVPG) of Human COL8A2 (NP_005193). <a href="#">Run BLAST with ExPASy</a> <a href="#">Run BLAST with NCBI</a>
阳性对照	Human fetal liver lysate.

### 性能

形式	Liquid
存放说明	Shipped at 4°C. Upon delivery aliquot and store at -20°C. Avoid repeated freeze / thaw cycles.
存储溶液	Constituents: 98% PBS, 2% Sucrose
纯度	Immunogen affinity purified
克隆	多克隆
同种型	IgG

### 应用

Our [Abpromise guarantee](#) covers the use of **ab112110** in the following tested applications.

The application notes include recommended starting dilutions; optimal dilutions/concentrations should be determined by the end user.

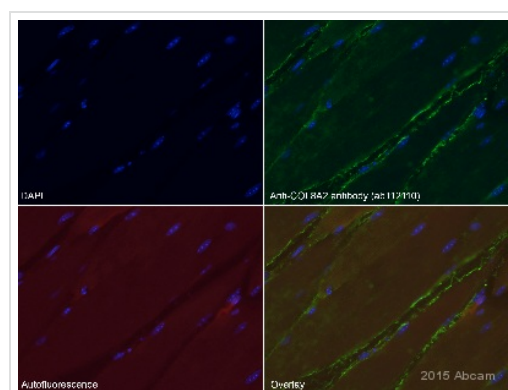
应用	Ab评论	说明
IHC-Fr	★★★★★	1/100.
WB		Use a concentration of 0.2 - 1 µg/ml. Predicted molecular weight: 67 kDa. Good results were obtained when blocked with 5% non-fat dry milk in 0.05% PBS-T.

## 靶标

**相关性** Collagen VIII is a member of the 'short chain collagen' subfamily, and is a major component of the hexagonal lattice in the Descemet membrane. Type VIII collagen molecules, expressed by corneal and vascular endothelial cells, are heterotrimers composed of 2 genetically distinct polypeptides, alpha-1(VIII) (COL8A1) and alpha-2(VIII) (COL8A2).

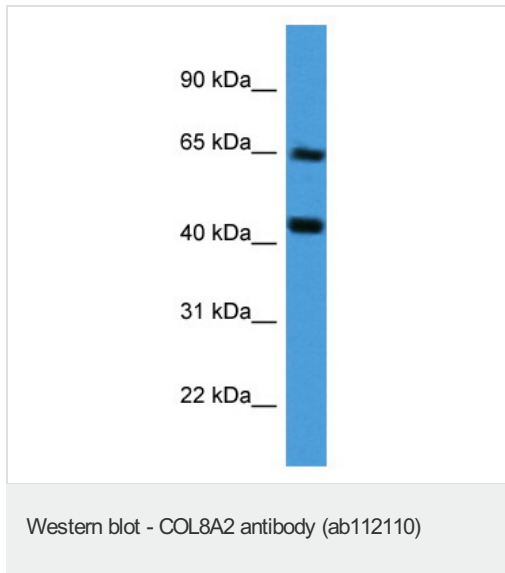
**细胞定位** Secreted; extracellular space; extracellular matrix; basement membrane.

## 图片



Immunohistochemistry (Frozen sections) - Anti-COL8A2 antibody (ab112110)  
Image is courtesy of an anonymous AbReview.

Immunohistochemical analysis of PFA-fixed frozen murine muscular and connective tissue sections, labelling COL8A2 with ab112110 at a dilution of 1/100 incubated for 72 hours at 25°C in 1% BSA & 3% donkey serum in PBST. Permeabilization was with PSBT. Blocking was with 3% donkey serum & 1% BSA in PBST incubated for 1 hour at 25°C. The secondary used was a donkey ant-rabbit polyclonal Alexa Fluor® 488 at 1/1000. Positive staining was found to be present in the extracellular space at the edge of the muscle tissue. A red channel was included to control for tissue autofluorescence. Within additional sections (not shown) negative controls, where the primary antibody ab112110 was not present showed no staining.



Anti-COL8A2 antibody (ab112110) at 1  $\mu\text{g/ml}$   
+ Human Fetal Liver lysate at 10  $\mu\text{g}$

**Predicted band size: 67 kDa**

**Please note:** All products are "FOR RESEARCH USE ONLY AND ARE NOT INTENDED FOR DIAGNOSTIC OR THERAPEUTIC USE"

### Our Abpromise to you: Quality guaranteed and expert technical support

- Replacement or refund for products not performing as stated on the datasheet
- Valid for 12 months from date of delivery
- Response to your inquiry within 24 hours
- We provide support in Chinese, English, French, German, Japanese and Spanish
- Extensive multi-media technical resources to help you
- We investigate all quality concerns to ensure our products perform to the highest standards

If the product does not perform as described on this datasheet, we will offer a refund or replacement. For full details of the Abpromise, please visit <http://www.abcam.cn/abpromise> or contact our technical team.

### Terms and conditions

- Guarantee only valid for products bought direct from Abcam or one of our authorized distributors