


## Product datasheet

# Anti-COBLL1 antibody ab64465

★★★★★ 1 Abreviews 3 图像

### 概述

产品名称	Anti-COBLL1抗体
描述	兔多克隆抗体to COBLL1
经测试应用	适用于: WB, ELISA, IHC-P
种属反应性	与反应: Human 预测可用于: Mouse, Rat, Rabbit, Horse, Chicken, Guinea pig, Cow, Cat, Dog 
免疫原	Synthetic peptide (Human)
阳性对照	HepG2 cell lysate. Kidney tissue.

### 性能

形式	Liquid
存放说明	Shipped at 4°C. Store at -20°C. Stable for 12 months at -20°C.
存储溶液	Preservative: None Constituents: 2% Sucrose, PBS
纯度	Immunogen affinity purified
克隆	多克隆
同种型	IgG

### 应用

Our [Abpromise guarantee](#) covers the use of **ab64465** in the following tested applications.

The application notes include recommended starting dilutions; optimal dilutions/concentrations should be determined by the end user.

应用	Ab评论	说明
WB		Use a concentration of 0.5 µg/ml. Detects a band of approximately 132 kDa (predicted molecular weight: 132 kDa). Good results were obtained when blocked with 5% non-fat dry milk in 0.05% PBS-T.
ELISA		Use at an assay dependent concentration. Titre using peptide based assay 1:312500.

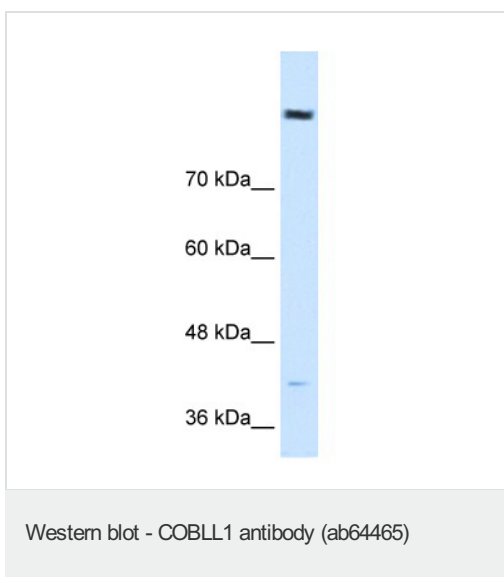
应用	Ab评论	说明
----	------	----

IHC-P ★★★★★ Use a concentration of 4 - 8 µg/ml.

## 靶标

**相关性** The function of COBLL1 is not known but there are five named isoforms produced by alternative splicing.

## 图片



Anti-COBLL1 antibody (ab64465) at 0.5 µg/ml  
+ HepG2 cell lysate at 10 µg

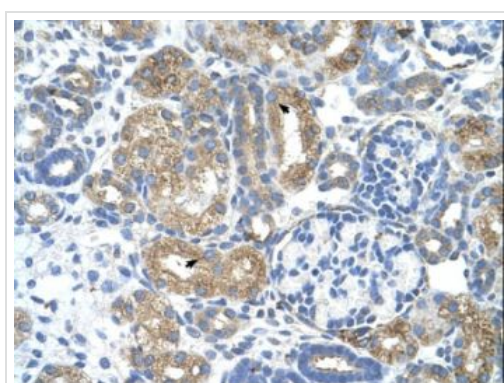
### Secondary

HRP conjugated anti-Rabbit IgG at 1/50000  
dilution

**Predicted band size** : 132 kDa

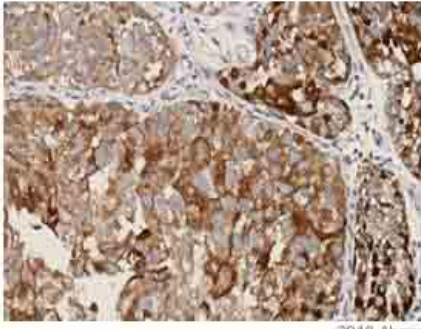
**Observed band size** : 132 kDa

**Additional bands at** : 42 kDa. We are  
unsure as to the identity of these extra bands.



ab64465 at 4µg/ml staining COBLL1 in  
human kidney tissue, epithelial cells of renal  
tubule (indicated by arrows)

Immunohistochemistry (Formalin/PFA-fixed paraffin-  
embedded sections) - Anti-COBLL1 antibody  
(ab64465)



Immunohistochemistry (Formalin/PFA-fixed paraffin-embedded sections) - COBL1 antibody (ab64465)

Image kindly supplied by Dr Karin Birkenkamp-Demtroeder through Abreview

ab64465 staining COBL1 in human bladder cancer tissue by Immunohistochemistry (formaldehyde fixed sections). Tissue was fixed with formaldehyde, a heat mediated antigen retrieval step was performed using citrate buffer. Tissue was blocked with 1% BSA for 30 minutes at room temperature followed by incubation with the primary antibody, at a 1/80 dilution, for 1 hour. A HRP-conjugated goat anti-rabbit polyclonal was used as secondary antibody un-diluted. Note that the protein localizes in the cytoplasm.

**Please note:** All products are "FOR RESEARCH USE ONLY AND ARE NOT INTENDED FOR DIAGNOSTIC OR THERAPEUTIC USE"

### Our Abpromise to you: Quality guaranteed and expert technical support

- Replacement or refund for products not performing as stated on the datasheet
- Valid for 12 months from date of delivery
- Response to your inquiry within 24 hours
- We provide support in Chinese, English, French, German, Japanese and Spanish
- Extensive multi-media technical resources to help you
- We investigate all quality concerns to ensure our products perform to the highest standards

If the product does not perform as described on this datasheet, we will offer a refund or replacement. For full details of the Abpromise, please visit <http://www.abcam.cn/abpromise> or contact our technical team.

### Terms and conditions

- Guarantee only valid for products bought direct from Abcam or one of our authorized distributors