


Product datasheet

Anti-CLEC2D antibody ab111105

2 图像

概述

产品名称	Anti-CLEC2D抗体
描述	山羊多克隆抗体to CLEC2D
宿主	Goat
经测试应用	适用于: ELISA, IHC-P
种属反应性	与反应: Human 预测可用于: Cow, Dog 
免疫原	Synthetic peptide, conjugated to KLH corresponding to internal sequence amino acids of Human CLEC2D.
阳性对照	Human placenta and tonsil tissues.

性能

形式	Liquid
存放说明	Shipped at 4°C. Upon delivery aliquot and store at -20°C. Avoid freeze / thaw cycles.
存储溶液	pH: 7.30 Preservative: 0.02% Sodium azide Constituents: Tris buffered saline, 0.5% BSA
纯度	Immunogen affinity purified
克隆	多克隆
同种型	IgG

应用

Our [Abpromise guarantee](#) covers the use of **ab111105** in the following tested applications.

The application notes include recommended starting dilutions; optimal dilutions/concentrations should be determined by the end user.

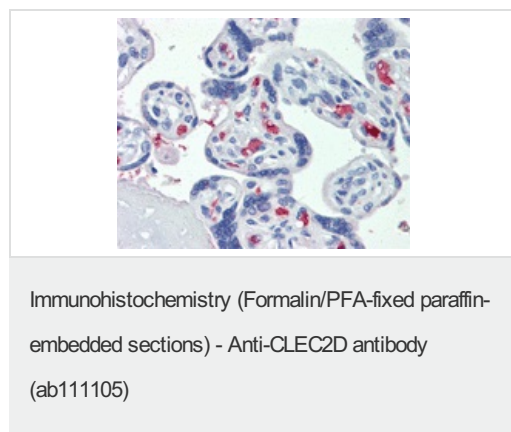
应用	Ab评论	说明
ELISA		1/16000.

应用	Ab评论	说明
IHC-P		Use a concentration of 3.75 µg/ml. Perform heat mediated antigen retrieval with citrate buffer pH 6 before commencing with IHC staining protocol.

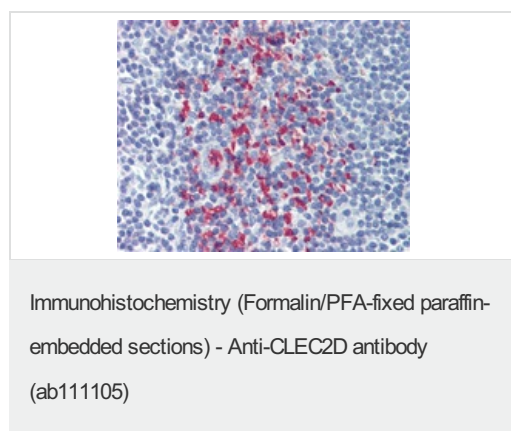
靶标

功能	Receptor for KLRB1 that protects target cells against natural killer cell-mediated lysis. Inhibits osteoclast formation. Inhibits bone resorption. Modulates the release of interferon-gamma. Binds high molecular weight sulfated glycosaminoglycans.
组织特异性	Detected in peripheral blood leukocytes, osteoblasts, lymph node, thymus and spleen. Isoform 1, isoform 2 and isoform 4 are expressed in T and B lymphocytes, and at lower levels in NK cells. They are also expressed in B-cell lines and LPS-matured monocyte-derived dendritic cells.
序列相似性	Contains 1 C-type lectin domain.
细胞定位	Endoplasmic reticulum and Cell membrane. Cell surface.

图片



ab111105, at 3.75µg/ml, staining CLED2D in formalin-fixed, paraffin-embedded Human Placenta tissue by Immunohistochemistry.



ab111105, at 3.75µg/ml, staining CLED2D in formalin-fixed, paraffin-embedded Human Tonsil tissue by Immunohistochemistry.

Please note: All products are "FOR RESEARCH USE ONLY AND ARE NOT INTENDED FOR DIAGNOSTIC OR THERAPEUTIC USE"

Our Abpromise to you: Quality guaranteed and expert technical support

- Replacement or refund for products not performing as stated on the datasheet
- Valid for 12 months from date of delivery
- Response to your inquiry within 24 hours

- We provide support in Chinese, English, French, German, Japanese and Spanish
- Extensive multi-media technical resources to help you
- We investigate all quality concerns to ensure our products perform to the highest standards

If the product does not perform as described on this datasheet, we will offer a refund or replacement. For full details of the Abpromise, please visit <http://www.abcam.cn/abpromise> or contact our technical team.

Terms and conditions

- Guarantee only valid for products bought direct from Abcam or one of our authorized distributors