


Product datasheet

Anti-CLDN16 antibody ab42482

2 References 1 图像

概述

产品名称	Anti-CLDN16抗体
描述	兔多克隆抗体to CLDN16
宿主	Rabbit
经测试应用	适用于: WB, ELISA
种属反应性	与反应: Human 预测可用于: Mouse, Rat, Cow, Dog, Pig 
免疫原	Synthetic peptide (Human) of 14 amino acid residues from the carboxyl terminus region of CLDN16 (FLAGAVLTCCLYLFKDVGPERNYPYSLRKAYSAAAGVSMAXSYSAPRTET A).
阳性对照	Human fetal lung lysate.

性能

形式	Liquid
存放说明	Shipped at 4°C. Upon delivery aliquot and store at -20°C. Avoid freeze / thaw cycles.
存储溶液	Preservative: None Constituents: 2% Sucrose, PBS
纯度	Immunogen affinity purified
克隆	多克隆
同种型	IgG

应用

Our [Abpromise guarantee](#) covers the use of **ab42482** in the following tested applications.

The application notes include recommended starting dilutions; optimal dilutions/concentrations should be determined by the end user.

应用	Ab 评论	说明
WB		Use a concentration of 0.6 µg/ml. Detects a band of approximately 34 kDa (predicted molecular weight: 34 kDa). Good results were obtained when blocked with 5% non-fat dry milk in 0.05% PBS-T.

应用	Ab 评论	说明
ELISA		1/62500.

靶标

功能

Plays a major role in tight junction-specific obliteration of the intercellular space, through calcium-independent cell-adhesion activity. Involved in paracellular magnesium reabsorption. Required for a selective paracellular conductance. May form, alone or in partnership with other constituents, an intercellular pore permitting paracellular passage of magnesium and calcium ions down their electrochemical gradients. Alternatively, it could be a sensor of magnesium concentration that could alter paracellular permeability mediated by other factors.

组织特异性

Kidney-specific, including the thick ascending limb of Henle (TAL).

疾病相关

Defects in CLDN16 are the cause of hypomagnesemia type 3 (HOMG3) [MIM:248250]; also known as familial hypomagnesemia with hypercalciuria and nephrocalcinosis (FHHNC). HOMG3 is a progressive renal disease characterized by primary renal magnesium wasting with hypomagnesemia, hypercalciuria and nephrocalcinosis. Recurrent urinary tract infections and kidney stones are often observed. In spite of hypercalciuria, patients do not show hypocalcemia.

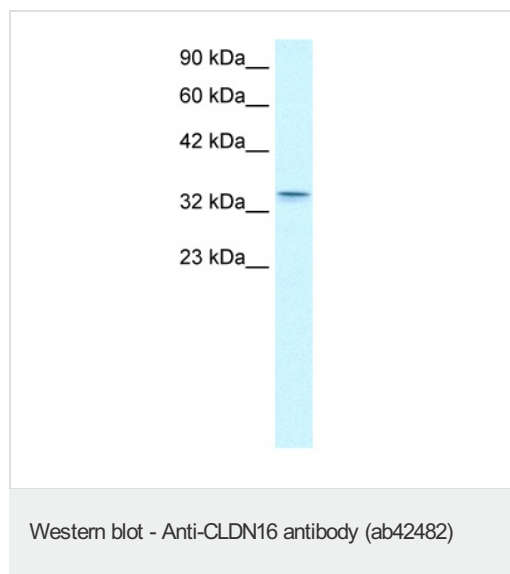
序列相似性

Belongs to the claudin family.

细胞定位

Cell junction > tight junction. Cell membrane.

图片



Anti-CLDN16 antibody (ab42482) at 0.6 µg/ml
+ Fetal lung lysate at 1 µg

Secondary

HRP conjugated goat-anti-Rabbit IgG 1:
50,000 - 100,000

Predicted band size: 34 kDa

Observed band size: 34 kDa

Please note: All products are "FOR RESEARCH USE ONLY AND ARE NOT INTENDED FOR DIAGNOSTIC OR THERAPEUTIC USE"

Our Abpromise to you: Quality guaranteed and expert technical support

- Replacement or refund for products not performing as stated on the datasheet

- Valid for 12 months from date of delivery
- Response to your inquiry within 24 hours

- We provide support in Chinese, English, French, German, Japanese and Spanish
- Extensive multi-media technical resources to help you
- We investigate all quality concerns to ensure our products perform to the highest standards

If the product does not perform as described on this datasheet, we will offer a refund or replacement. For full details of the Abpromise, please visit <http://www.abcam.cn/abpromise> or contact our technical team.

Terms and conditions

- Guarantee only valid for products bought direct from Abcam or one of our authorized distributors