

Product datasheet

Anti-CKII alpha antibody ab10466

★★★★☆ 5 Abreviews 8 References 3 图像

概述

产品名称	Anti-CKII alpha抗体
描述	兔多克隆抗体to CKII alpha
宿主	Rabbit
特异性	Reacts with alpha subunit.
经测试应用	适用于: WB, ICC/IF
种属反应性	与反应: Human 预测可用于: Mouse, Rat, Rabbit, Horse, Chicken, Guinea pig, Cow, Dog, Turkey, Pig, Xenopus laevis, Chimpanzee, Rhesus monkey, Gorilla, Orangutan, Xenopus tropicalis
免疫原	The immunogen was a synthetic peptide, which represented a portion of human casein kinase 2, alpha 1 polypeptide encoded within exon 3 (LocusLink ID 1457).
阳性对照	RIPA extract from HeLa cells treated with CKII alpha siRNA or vimentin siRNA.

性能

形式	Liquid
存放说明	Shipped at 4°C. Upon delivery aliquot and store at -20°C. Avoid freeze / thaw cycles.
存储溶液	Preservative: 0.1% Sodium Azide Constituents: 8mM PBS, 60mM Citrate, 150mM Tris, pH 7-8
纯度	Immunogen affinity purified
纯化说明	Antibodies were affinity purified using the peptide immobilized on solid support.
克隆	多克隆
同种型	IgG

应用

Our [Abpromise guarantee](#) covers the use of **ab10466** in the following tested applications.

The application notes include recommended starting dilutions; optimal dilutions/concentrations should be determined by the end user.

应用	Ab评论	说明
WB	★★★★★	1/1000 - 1/5000. Detects a band of approximately 42 kDa (predicted molecular weight: 45 kDa).
ICC/IF	★★★★★	Use a concentration of 5 µg/ml.

靶标

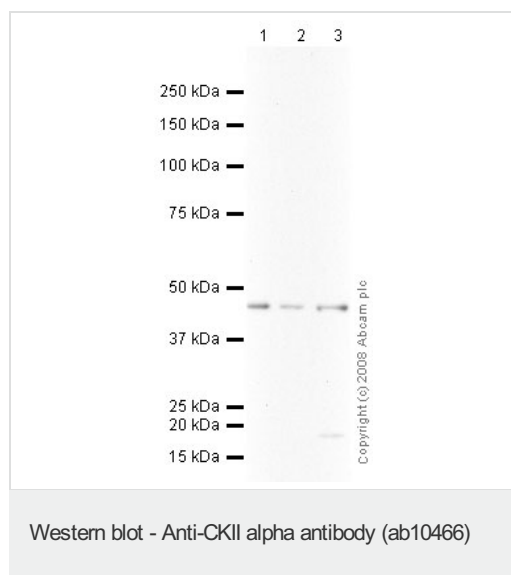
功能

Casein kinases are operationally defined by their preferential utilization of acidic proteins such as caseins as substrates. The alpha and alpha' chains contain the catalytic site. Participates in Wnt signaling. CK2 phosphorylates 'Ser-392' of p53/TP53 following UV irradiation.

序列相似性

Belongs to the protein kinase superfamily. Ser/Thr protein kinase family. CK2 subfamily. Contains 1 protein kinase domain.

图片



All lanes : Anti-CKII alpha antibody (ab10466) at 1/2500 dilution

Lane 1 : Y79 (Human retinoblastoma cell line) Whole Cell Lysate

Lane 2 : Jurkat (Human T cell lymphoblast-like cell line) Whole Cell Lysate

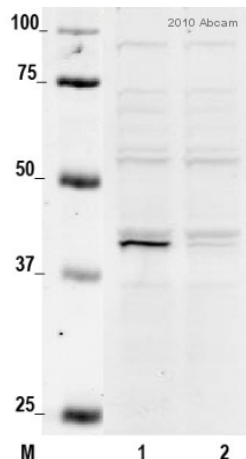
Lane 3 : HepG2 (Human hepatocellular liver carcinoma cell line) Whole Cell Lysate

Lysates/proteins at 10 µg per lane.

Secondary

All lanes : Goat polyclonal to Rabbit IgG - H&L - Pre-Adsorbed (HRP) at 1/3000 dilution

Predicted band size: 45 kDa



Western blot - Anti-CKII alpha antibody (ab10466)

This image is courtesy of an Abreview submitted by Svetlana Khoronenkova

All lanes : Anti-CKII alpha antibody

(ab10466) at 1/5000 dilution (LI-COR Blocker (1:1) in PBS + 0.1% Tween for 3 hours)

Lane 1 : Whole cell lysate of HeLa cells

Lane 2 : siRNA to CK2 alpha in HeLa cell lysate

Lysates/proteins at 30 µg per lane.

Secondary

All lanes : An Alexa Fluor®680-conjugated

Goat anti-rabbit polyclonal at 1/10000 dilution

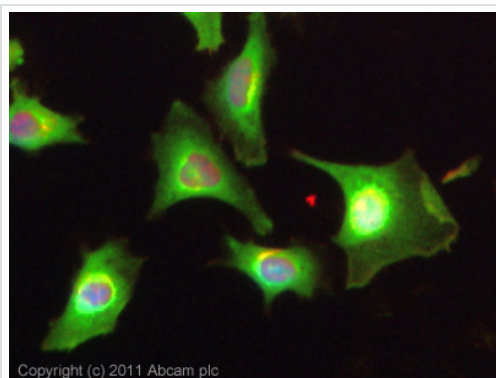
Predicted band size: 45 kDa

Observed band size: 42 kDa

Blocking Step: 50% LI-COR® Odyssey®

Blocking Buffer for 45 minutes at room temperature.

All non-specific bands were very weak.



Immunocytochemistry/ Immunofluorescence - Anti-CKII alpha antibody (ab10466)

ICC/IF image of ab10466 stained HeLa cells.

The cells were 4% formaldehyde (10 min) and then incubated in 1%BSA / 10% normal goat serum / 0.3M glycine in 0.1% PBS-Tween for 1h to permeabilise the cells and block non-specific protein-protein interactions. The cells were then incubated with the antibody (ab10466, 5µg/ml) overnight at +4°C. The secondary antibody (green) was [ab96899](#) Dylight 488 goat anti-rabbit IgG (H+L) used at a 1/250 dilution for 1h. Alexa Fluor® 594 WGA was used to label plasma membranes (red) at a 1/200 dilution for 1h. DAPI was used to stain the cell nuclei (blue) at a concentration of 1.43µM.

Please note: All products are "FOR RESEARCH USE ONLY AND ARE NOT INTENDED FOR DIAGNOSTIC OR THERAPEUTIC USE"

Our Abpromise to you: Quality guaranteed and expert technical support

- Replacement or refund for products not performing as stated on the datasheet
- Valid for 12 months from date of delivery
- Response to your inquiry within 24 hours

- We provide support in Chinese, English, French, German, Japanese and Spanish
- Extensive multi-media technical resources to help you
- We investigate all quality concerns to ensure our products perform to the highest standards

If the product does not perform as described on this datasheet, we will offer a refund or replacement. For full details of the Abpromise, please visit <http://www.abcam.cn/abpromise> or contact our technical team.

Terms and conditions

- Guarantee only valid for products bought direct from Abcam or one of our authorized distributors