

Product datasheet

Anti-CGRP antibody ab22560

8 References 1 图像

概述

产品名称	Anti-CGRP抗体
描述	羊多克隆抗体to CGRP
特异性	On rat spinal cord immunostaining may be abolished by preincubation with 10nmol CGRP (rat alpha) per mL diluted antiserum. Neither substance P nor galanin have any effect on immunostaining when used at 10nmol/mL diluted antiserum. It is believed that ab22560 cross-reacts with all known forms of rat and human CGRP.
经测试应用	适用于: ICC/IF, IHC-FoFr
种属反应性	与反应: Rat, Human
免疫原	Synthetic peptide corresponding to Rat CGRP conjugated to Keyhole Limpet Haemocyanin (KLH).
阳性对照	Rat spinal cord.

性能

形式	Liquid
存放说明	Shipped at 4°C. Upon delivery aliquot and store at -20°C. Avoid freeze / thaw cycles.
存储溶液	Preservative: 0.1% Sodium Azide
纯度	IgG fraction
纯化说明	The antiserum has been partially purified by caprylic acid and ammonium sulphate precipitation.
克隆	多克隆
同种型	IgG

应用

Our [Abpromise guarantee](#) covers the use of **ab22560** in the following tested applications.

The application notes include recommended starting dilutions; optimal dilutions/concentrations should be determined by the end user.

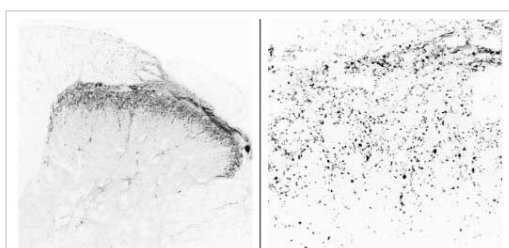
应用	Ab评论	说明
ICC/IF		Use at an assay dependent concentration. PubMed: 24042033
IHC-FoFr		1/2000 - 1/4000.

靶标

相关性 CGRP is present in C-cells of the thyroid and in central and peripheral nerves. CGRP has several important physiologic roles: it is a potent vasodilator, and can affect the force and rate of heart beat; it can modulate acetylcholine receptor function at the neuromuscular junction; it has been demonstrated to block tolerance to morphine; and it can modulate antigen presentation in Langerhans cells in the skin. Despite these important physiologic functions, therapeutic strategies using CGRP have been impeded due to the lack of a cloned CGRP receptor with which ligands could be developed.

细胞定位 Endoplasmic reticulum and Secreted

Anti-CGRP antibody 图像



Immunocytochemistry/ Immunofluorescence - Anti-CGRP antibody (ab22560)

Vibratome (70 μ m) sections of rat spinal cord immunostained with sheep polyclonal antiserum to CGRP at a dilution of 1:1000. Negative images of fluorescence detection procedure (Alexa488 conjugated secondary antibody). Micrograph courtesy of Professor Andrew Todd (university of Glasgow).

Please note: All products are "FOR RESEARCH USE ONLY AND ARE NOT INTENDED FOR DIAGNOSTIC OR THERAPEUTIC USE"

Our Abpromise to you: Quality guaranteed and expert technical support

- Replacement or refund for products not performing as stated on the datasheet
- Valid for 12 months from date of delivery
- Response to your inquiry within 24 hours
- We provide support in Chinese, English, French, German, Japanese and Spanish
- Extensive multi-media technical resources to help you
- We investigate all quality concerns to ensure our products perform to the highest standards

If the product does not perform as described on this datasheet, we will offer a refund or replacement. For full details of the Abpromise, please visit <http://www.abcam.cn/abpromise> or contact our technical team.

Terms and conditions

- Guarantee only valid for products bought direct from Abcam or one of our authorized distributors