

Product datasheet

Anti-CDT1 antibody ab83174

★★★★☆ 2 Abreviews 3 References 2 图像

概述

产品名称	Anti-CDT1抗体
描述	兔多克隆抗体to CDT1
经测试应用	适用于: WB, ICC/IF
种属反应性	与反应: Human
免疫原	Synthetic peptide conjugated to KLH derived from within residues 500 to the C-terminus of Human CDT1.参阅Abcam的 专有抗源政策 (Peptide available as ab93742 .)
阳性对照	This antibody gave a positive signal in both human brain and liver tissue lysates.

性能

形式	Liquid
存放说明	Shipped at 4°C. Store at +4°C short term (1-2 weeks). Upon delivery aliquot. Store at -20°C or -80°C. Avoid freeze / thaw cycle.
存储溶液	Preservative: 0.02% Sodium Azide Constituents: 1% BSA, PBS, pH 7.4
纯度	Immunogen affinity purified
克隆	多克隆
同种型	IgG

应用

Our [Abpromise guarantee](#) covers the use of **ab83174** in the following tested applications.

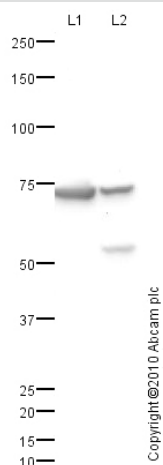
The application notes include recommended starting dilutions; optimal dilutions/concentrations should be determined by the end user.

应用	Ab评论	说明
WB		Use a concentration of 1 µg/ml. Detects a band of approximately 73 kDa (predicted molecular weight: 60 kDa).
ICC/IF	★★★★☆	Use a concentration of 5 µg/ml.

概述

功能	Cooperates with CDC6 to promote the loading of the mini-chromosome maintenance complex onto chromatin to form the pre-replication complex necessary to initiate DNA replication. Binds DNA in a sequence-, strand-, and conformation-independent manner. Potential oncogene.
序列相似性	Belongs to the Cdt1 family.
发展阶段	Present during G1 and early S phase of the cell cycle. Degraded during the late S, G2, and M phases.
结构域	The PIP-box K+4 motif mediates both the interaction with PCNA and the recruitment of the DCX(DTL) complex: while the PIP-box interacts with PCNA, the presence of the K+4 submotif, recruits the DCX(DTL) complex, leading to its ubiquitination.
翻译后修饰	Ubiquitinated by the DCX(DTL) complex, also named CRL4(CDT2) complex, in response to DNA damage, leading to its degradation. Ubiquitination by the DCX(DTL) complex is necessary to ensure proper cell cycle regulation and is PCNA-dependent: interacts with PCNA via its PIP-box, while the presence of the containing the 'K+4' motif in the PIP box, recruit the DCX(DTL) complex, leading to its degradation. The interaction with GMNN protects it against ubiquitination. Phosphorylated by cyclin A-dependent kinases which results in the binding of CDT1 to the F-box protein SKP2 and subsequent degradation. Binding to GMNN is not affected by phosphorylation.
细胞定位	Nucleus.

图片



Western blot - CDT1 antibody (ab83174)

All lanes : Anti-CDT1 antibody (ab83174) at 1 µg/ml

Lane 1 : Human liver tissue lysate - total protein (ab29889)

Lane 2 : Human brain tissue lysate - total protein (ab29466)

Lysates/proteins at 10 µg per lane.

Secondary

Goat polyclonal to Rabbit IgG - H&L - Pre-Adsorbed (HRP) at 1/3000 dilution
Developed using the ECL technique

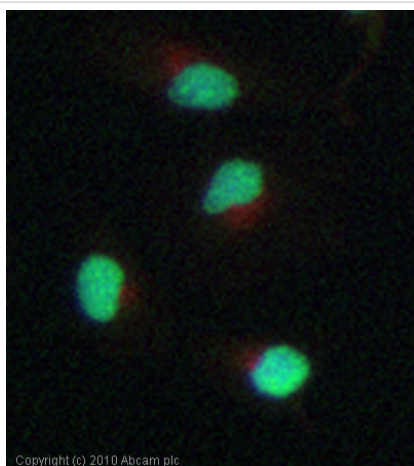
Performed under reducing conditions.

Predicted band size : 60 kDa

Observed band size : 73 kDa

Additional bands at : 55 kDa. We are unsure as to the identity of these extra bands.

Exposure time : 1 minute



Immunocytochemistry/ Immunofluorescence - CDT1 antibody (ab83174)

ICC/IF image of ab83174 stained HeLa cells. The cells were 100% methanol fixed (5 min) and then incubated in 1%BSA / 10% normal goat serum / 0.3M glycine in 0.1% PBS-Tween for 1h to permeabilise the cells and block non-specific protein-protein interactions. The cells were then incubated with the antibody (ab83174, 5µg/ml) overnight at +4°C. The secondary antibody (green) was Alexa Fluor® 488 goat anti-rabbit IgG (H+L) used at a 1/1000 dilution for 1h. Alexa Fluor® 594 WGA was used to label plasma membranes (red) at a 1/200 dilution for 1h. DAPI was used to stain the cell nuclei (blue) at a concentration of 1.43µM. This antibody also gave a positive result in 4% PFA fixed (10 min) HeLa, Hek293, HepG2 and MCF7 cells at 5µg/ml.

Please note: All products are "FOR RESEARCH USE ONLY AND ARE NOT INTENDED FOR DIAGNOSTIC OR THERAPEUTIC USE"

Our Abpromise to you: Quality guaranteed and expert technical support

- Replacement or refund for products not performing as stated on the datasheet
- Valid for 12 months from date of delivery
- Response to your inquiry within 24 hours

- We provide support in Chinese, English, French, German, Japanese and Spanish
- Extensive multi-media technical resources to help you
- We investigate all quality concerns to ensure our products perform to the highest standards

If the product does not perform as described on this datasheet, we will offer a refund or replacement. For full details of the Abpromise, please visit <http://www.abcam.cn/abpromise> or contact our technical team.

Terms and conditions

- Guarantee only valid for products bought direct from Abcam or one of our authorized distributors