

Product datasheet

Anti-CDA antibody ab82347

★★★★☆ 1 Abreviews 1 References 3 图像

概述

产品名称	Anti-CDA抗体
描述	兔多克隆抗体to CDA
宿主	Rabbit
经测试应用	适用于: ICC/IF, WB, ELISA
种属反应性	与反应: Mouse, Human
免疫原	Synthetic peptide selected from the Center region of human CDA conjugated to KLH.
阳性对照	HeLa cell line and mouse kidney tissue lysates.

性能

形式	Liquid
存放说明	Shipped at 4°C. Upon delivery aliquot and store at -20°C. Avoid repeated freeze / thaw cycles.
存储溶液	Preservative: 0.09% Sodium Azide Constituents: PBS
纯度	Ammonium Sulphate Precipitation
纯化说明	ab82347 is prepared by Saturated Ammonium Sulfate (SAS) precipitation followed by dialysis against PBS.
克隆	多克隆
同种型	IgG

应用

Our [Abpromise guarantee](#) covers the use of **ab82347** in the following tested applications.

The application notes include recommended starting dilutions; optimal dilutions/concentrations should be determined by the end user.

应用	Ab评论	说明
ICC/IF		Use a concentration of 10 µg/ml.
WB	★★★★☆	1/50 - 1/100. Detects a band of approximately 16 kDa (predicted molecular weight: 16 kDa).

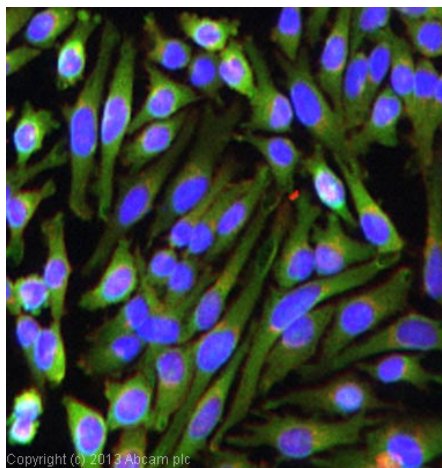
应用	Ab评论	说明
ELISA		1/1000.

靶标

相关性

CDA (Cytidine deaminase) scavengers exogenous and endogenous cytidine and 2'-deoxycytidine for UMP synthesis. Growth inhibition of granulocyte-macrophage colony forming cells by human cytidine deaminase requires the catalytic function of the protein. It is highly expressed in granulocytes.

图片



Immunocytochemistry/ Immunofluorescence - Anti-CDA antibody (ab82347)

ICC/IF image of ab82347 stained HeLa cells. The cells were 4% formaldehyde fixed (10 min) and then incubated in 1%BSA / 10% normal goat serum / 0.3M glycine in 0.1% PBS-Tween for 1h to permeabilise the cells and block non-specific protein-protein interactions. The cells were then incubated with the antibody (ab82347, 10µg/ml) overnight at +4°C. The secondary antibody (green) was ab96899, DyLight® 488 goat anti-rabbit IgG (H+L) used at a 1/250 dilution for 1h. Alexa Fluor® 594 WGA was used to label plasma membranes (red) at a 1/200 dilution for 1h. DAPI was used to stain the cell nuclei (blue) at a concentration of 1.43µM.

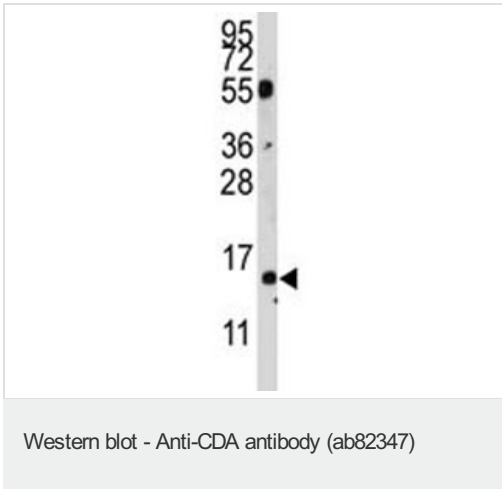


Western blot - Anti-CDA antibody (ab82347)

Anti-CDA antibody (ab82347) at 1/50 dilution
+ HeLa cell line lysate at 35 µg

Predicted band size: 16 kDa

Observed band size: 16 kDa



Anti-CDA antibody (ab82347) at 1/50 dilution
+ mouse kidney tissue lysates at 35 µg

Predicted band size: 16 kDa

Observed band size: 16 kDa

Additional bands at: 55 kDa. We are unsure as to the identity of these extra bands.

Please note: All products are "FOR RESEARCH USE ONLY AND ARE NOT INTENDED FOR DIAGNOSTIC OR THERAPEUTIC USE"

Our Abpromise to you: Quality guaranteed and expert technical support

- Replacement or refund for products not performing as stated on the datasheet
- Valid for 12 months from date of delivery
- Response to your inquiry within 24 hours
- We provide support in Chinese, English, French, German, Japanese and Spanish
- Extensive multi-media technical resources to help you
- We investigate all quality concerns to ensure our products perform to the highest standards

If the product does not perform as described on this datasheet, we will offer a refund or replacement. For full details of the Abpromise, please visit <http://www.abcam.cn/abpromise> or contact our technical team.

Terms and conditions

- Guarantee only valid for products bought direct from Abcam or one of our authorized distributors