

Product datasheet

Anti-CD252 antibody [MM0505-8S23] ab89896

★★★★★ 1 Abreviews 1 图像

概述

产品名称	Anti-CD252抗体[MM0505-8S23]
描述	小鼠单克隆抗体[MM0505-8S23] to CD252
宿主	Mouse
经测试应用	适用于: IHC-P, IHC-Fr, Neutralising, Flow Cyt
种属反应性	与反应: Human, Cynomolgus monkey
免疫原	Recombinant full length Human CD252
常规说明	The antibody is specific to OX40L.

性能

形式	Lyophilised:Reconstitute the antibody with 200µl sterile PBS and the final concentration is 0.5mg/ml.
存放说明	Shipped at 4°C. Upon delivery aliquot and store at -20°C or -80°C. Avoid repeated freeze / thaw cycles.
存储溶液	Preservative: None Constituents: PBS
纯度	Protein G purified
纯化说明	filter sterilised.
克隆	单克隆
克隆编号	MM0505-8S23
同种型	IgG1

应用

Our [Abpromise guarantee](#) covers the use of **ab89896** in the following tested applications.

The application notes include recommended starting dilutions; optimal dilutions/concentrations should be determined by the end user.

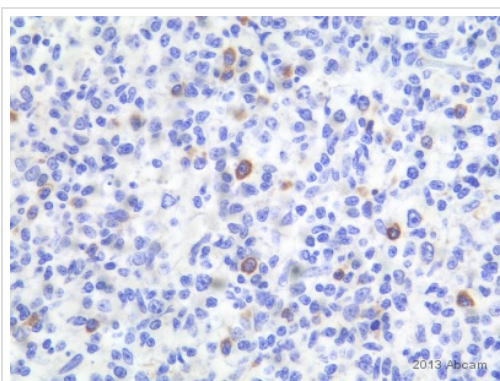
应用	Ab评论	说明
IHC-P	★★★★★	Use at an assay dependent concentration.

应用	Ab评论	说明
IHC-Fr		1/20 - 1/200.
Neutralising		Use at an assay dependent concentration. Proliferation of human PBMCs elicited by TNFSF4 (25ng/mL) can be neutralized by increasing concentrations of ab89896 in a dose-dependent manner. The ED50 is between 40-80ng/mL.
Flow Cyt		1/50 - 1/100. ab170190 - Mouse monoclonal IgG1, is suitable for use as an isotype control with this antibody.

靶标

功能	Cytokine that binds to TNFRSF4. Co-stimulates T-cell proliferation and cytokine production.
疾病相关	Genetic variations in TNFSF4 influence susceptibility to systemic lupus erythematosus (SLE) [MIM:152700]. SLE is a chronic, inflammatory and often febrile multisystemic disorder of connective tissue. It affects principally the skin, joints, kidneys and serosal membranes. It is thought to represent a failure of the regulatory mechanisms of the autoimmune system. Note=The upstream region of TNFSF4 contains a single risk haplotype for SLE, which is correlated with increased expression of both cell-surface TNFSF4 and TNFSF4 transcripts. Increased levels of TNFSF4 are thought to augment T cell-APC interaction and the functional consequences of T cell activation, thereby destabilizing peripheral tolerance.
序列相似性	Belongs to the tumor necrosis factor family.
细胞定位	Membrane.

图片



Immunohistochemistry (Formalin/PFA-fixed paraffin-embedded sections) - Anti-CD252 antibody [MM0505-8S23] (ab89896)

This image is courtesy of an Abreview submitted by Jing Ma

ab89896 staining CD252 in Cynomolgus Monkey lymph node tissue sections by Immunohistochemistry (IHC-P - paraformaldehyde-fixed, paraffin-embedded sections). Tissue was fixed with formaldehyde and blocked with 10% serum for 20 minutes at room temperature; antigen retrieval was enzymatic. Samples were incubated with primary antibody (1/25) for 30 minutes at room temperature. An undiluted Biotin-conjugated Donkey anti-mouse IgG polyclonal was used as the secondary antibody.

Please note: All products are "FOR RESEARCH USE ONLY AND ARE NOT INTENDED FOR DIAGNOSTIC OR THERAPEUTIC USE"

Our Abpromise to you: Quality guaranteed and expert technical support

- Replacement or refund for products not performing as stated on the datasheet
- Valid for 12 months from date of delivery
- Response to your inquiry within 24 hours

- We provide support in Chinese, English, French, German, Japanese and Spanish
- Extensive multi-media technical resources to help you
- We investigate all quality concerns to ensure our products perform to the highest standards

If the product does not perform as described on this datasheet, we will offer a refund or replacement. For full details of the Abpromise, please visit <http://www.abcam.cn/abpromise> or contact our technical team.

Terms and conditions

- Guarantee only valid for products bought direct from Abcam or one of our authorized distributors