


Product datasheet

Anti-CD20 antibody ab85809

1 图像

概述

产品名称	Anti-CD20抗体
描述	兔多克隆抗体to CD20
宿主	Rabbit
经测试应用	适用于: WB, IHC-P
种属反应性	与反应: Human 预测可用于: Rat 
免疫原	Synthetic peptide conjugated to KLH derived from within residues 200 to the C-terminus of Human CD20. 参阅Abcam的专有抗源政策(Peptide available as ab97360 .)
阳性对照	This antibody gave a positive signal in the following whole cell lysates: Raji; Ramos.

性能

形式	Liquid
存放说明	Shipped at 4°C. Store at +4°C short term (1-2 weeks). Upon delivery aliquot. Store at -20°C or -80°C. Avoid freeze / thaw cycle.
存储溶液	Preservative: 0.02% Sodium Azide Constituents: 1% BSA, PBS, pH 7.4
纯度	Immunogen affinity purified
克隆	多克隆
同种型	IgG

应用

Our [Abpromise guarantee](#) covers the use of **ab85809** in the following tested applications.

The application notes include recommended starting dilutions; optimal dilutions/concentrations should be determined by the end user.

应用	Ab评论	说明
WB		Use a concentration of 1 µg/ml. Detects a band of approximately 33 kDa (predicted molecular weight: 33 kDa).
IHC-P		Use a concentration of 5 µg/ml.

靶标

功能 This protein may be involved in the regulation of B-cell activation and proliferation.

组织特异性 Expressed on B-cells.

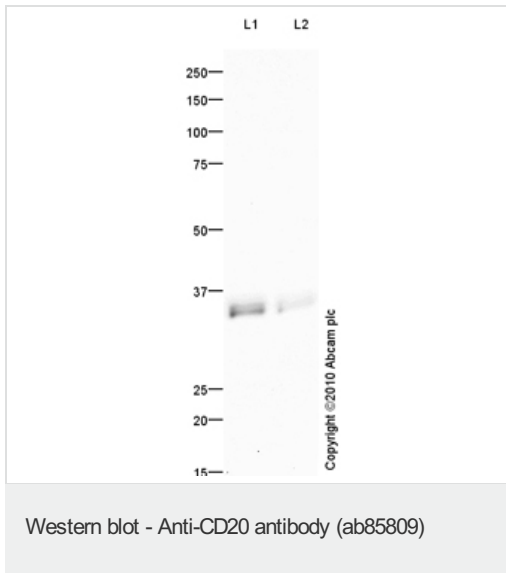
疾病相关 Defects in MS4A1 are the cause of immunodeficiency common variable type 5 (CVID5) [MIM:613495]; also called antibody deficiency due to CD20 defect. CVID5 is a primary immunodeficiency characterized by antibody deficiency, hypogammaglobulinemia, recurrent bacterial infections and an inability to mount an antibody response to antigen. The defect results from a failure of B-cell differentiation and impaired secretion of immunoglobulins; the numbers of circulating B cells is usually in the normal range, but can be low.

序列相似性 Belongs to the MS4A family.

翻译后修饰 Phosphorylated. Might be functionally regulated by protein kinase(s).

细胞定位 Membrane.

图片



All lanes : Anti-CD20 antibody (ab85809) at 1 µg/ml

Lane 1 : Ramos (Human Burkitt's lymphoma cell line) Whole Cell Lysate

Lane 2 : Raji (Human Burkitt's lymphoma cell line) Whole Cell Lysate

Lysates/proteins at 10 µg per lane.

Secondary

All lanes : Goat polyclonal to Rabbit IgG - H&L - Pre-Adsorbed (HRP) at 1/3000 dilution

Developed using the ECL technique.

Performed under reducing conditions.

Predicted band size: 33 kDa

Observed band size: 33 kDa

Exposure time: 20 minutes

Human B-lymphocyte antigen CD20 contains a potential phosphorylation site (SwissProt) which may explain the banding pattern observed.

Please note: All products are "FOR RESEARCH USE ONLY AND ARE NOT INTENDED FOR DIAGNOSTIC OR THERAPEUTIC USE"

Our Abpromise to you: Quality guaranteed and expert technical support

- Replacement or refund for products not performing as stated on the datasheet
- Valid for 12 months from date of delivery
- Response to your inquiry within 24 hours
- We provide support in Chinese, English, French, German, Japanese and Spanish
- Extensive multi-media technical resources to help you
- We investigate all quality concerns to ensure our products perform to the highest standards

If the product does not perform as described on this datasheet, we will offer a refund or replacement. For full details of the Abpromise, please visit <http://www.abcam.cn/abpromise> or contact our technical team.

Terms and conditions

- Guarantee only valid for products bought direct from Abcam or one of our authorized distributors