

Product datasheet

Anti-CD20 antibody [B-H20] (FITC) ab46895

2 References 1 图像

概述

产品名称	Anti-CD20抗体[B-H20] (FITC)
描述	小鼠单克隆抗体[B-H20] to CD20 (FITC)
宿主	Mouse
偶联物	FITC. Ex: 493nm, Em: 528nm
经测试应用	适用于: Flow Cyt
种属反应性	与反应: Human
免疫原	Chronic Lymphoid Leukaemia cells (CLL) (Human)

性能

形式	Liquid
存放说明	Shipped at 4°C. Store at +4°C.
存储溶液	Preservative: 0.1% Sodium Azide Constituents: 1.0% BSA, PBS
纯度	Ion Exchange Chromatography
克隆	单克隆
克隆编号	B-H20
骨髓瘤	x63-Ag8.653
同种型	IgG2a

应用

Our [Abpromise guarantee](#) covers the use of **ab46895** in the following tested applications.

The application notes include recommended starting dilutions; optimal dilutions/concentrations should be determined by the end user.

应用	Ab评论	说明
----	------	----

Flow Cyt

应用说明 Flow Cyt: Use 10µl for 10<sup>6</sup> cells or 100 µl of whole blood.

Not yet tested in other applications.

Optimal dilutions/concentrations should be determined by the end user.

## 靶标

**功能** This protein may be involved in the regulation of B-cell activation and proliferation.

**组织特异性** Expressed on B-cells.

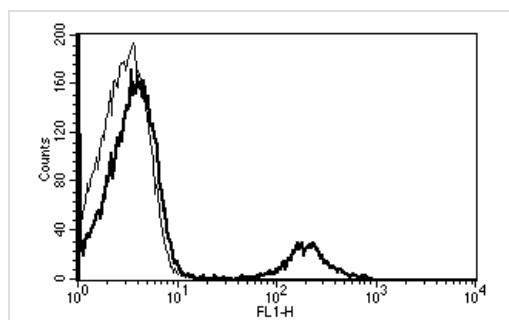
**疾病相关** Defects in MS4A1 are the cause of immunodeficiency common variable type 5 (CVID5) [MIM:613495]; also called antibody deficiency due to CD20 defect. CVID5 is a primary immunodeficiency characterized by antibody deficiency, hypogammaglobulinemia, recurrent bacterial infections and an inability to mount an antibody response to antigen. The defect results from a failure of B-cell differentiation and impaired secretion of immunoglobulins; the numbers of circulating B cells is usually in the normal range, but can be low.

**序列相似性** Belongs to the MS4A family.

**翻译后修饰** Phosphorylated. Might be functionally regulated by protein kinase(s).

**细胞定位** Membrane.

## 图片



Ab46895, at a concentration of 10  $\mu$ l for labeling  $10^6$  cells, staining CD20 in lymphocytes by flow cytometry.

Flow Cytometry - Anti-CD20 antibody [B-H20] (FITC)  
(ab46895)

**Please note:** All products are "FOR RESEARCH USE ONLY AND ARE NOT INTENDED FOR DIAGNOSTIC OR THERAPEUTIC USE"

## Our Abpromise to you: Quality guaranteed and expert technical support

- Replacement or refund for products not performing as stated on the datasheet
- Valid for 12 months from date of delivery
- Response to your inquiry within 24 hours
- We provide support in Chinese, English, French, German, Japanese and Spanish
- Extensive multi-media technical resources to help you
- We investigate all quality concerns to ensure our products perform to the highest standards

If the product does not perform as described on this datasheet, we will offer a refund or replacement. For full details of the Abpromise, please visit <http://www.abcam.cn/abpromise> or contact our technical team.

## Terms and conditions

---

- Guarantee only valid for products bought direct from Abcam or one of our authorized distributors