

Product datasheet

Anti-CD18 antibody [MEM-48], prediluted (FITC) ab18238

1 图像

概述

产品名称	Anti-CD18抗体[MEM-48], prediluted (FITC)
描述	小鼠单克隆抗体[MEM-48] to CD18, prediluted (FITC)
偶联物	FITC. Ex: 493nm, Em: 528nm
经测试应用	适用于: Flow Cyt
种属反应性	与反应: Human
免疫原	Leucocytes of a patient suffering from a LGL-type leukaemia (Human).
表位	The antibody recognizes an epitope involving residues 534-546 in cysteine-rich repeat 3 of the CD18 antigen.

性能

形式	Prediluted
存放说明	Shipped at 4°C. Store at +4°C.
存储溶液	Preservative: 15mM Sodium Azide Constituents: PBS, BSA. pH 7.4
纯度	Protein G purified
克隆	单克隆
克隆编号	MEM-48
同种型	IgG1

应用

Our [Abpromise guarantee](#) covers the use of **ab18238** in the following tested applications.

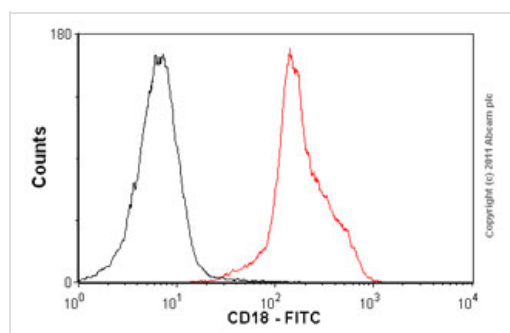
The application notes include recommended starting dilutions; optimal dilutions/concentrations should be determined by the end user.

应用	Ab评论	说明
Flow Cyt		Use 0.75µl for 10 ⁶ cells. ab91356 -Mouse monoclonal IgG1, is suitable for use as an isotype control with this antibody.

靶标

功能	Integrin alpha-L/beta-2 is a receptor for ICAM1, ICAM2, ICAM3 and ICAM4. Integrins alpha-M/beta-2 and alpha-X/beta-2 are receptors for the iC3b fragment of the third complement component and for fibrinogen. Integrin alpha-X/beta-2 recognizes the sequence G-P-R in fibrinogen alpha-chain. Integrin alpha-M/beta-2 recognizes P1 and P2 peptides of fibrinogen gamma chain. Integrin alpha-M/beta-2 is also a receptor for factor X. Integrin alpha-D/beta-2 is a receptor for ICAM3 and VCAM1.
疾病相关	Defects in ITGB2 are the cause of leukocyte adhesion deficiency type 1 (LAD1) [MIM:116920]. LAD1 patients have recurrent bacterial infections and their leukocytes are deficient in a wide range of adhesion-dependent functions.
序列相似性	Belongs to the integrin beta chain family. Contains 1 VWFA domain.
翻译后修饰	Both Ser-745 and Ser-756 become phosphorylated when T-cells are exposed to phorbol esters. Phosphorylation on Thr-758 (but not on Ser-756) allows interaction with 14-3-3 proteins.
细胞定位	Membrane.

图片



Flow Cytometry-Anti-CD18 antibody [MEM-48] (FITC), prediluted(ab18238)

Overlay histogram showing peripheral blood lymphocytes stained with ab18238 (red line). The cells incubated in 1x PBS / 10% normal goat serum / 0.3M glycine to block non-specific protein-protein interactions. The cells were then incubated with the antibody (ab18238, 0.5 μ g/ 1×10^6 cells) for 30 min at 22°C. Isotype control antibody (black line) was mouse IgG1 FITC (2 μ g/ 1×10^6 cells) for 30 min at 22°C. Acquisition of >5,000 events was performed.

Please note: All products are "FOR RESEARCH USE ONLY AND ARE NOT INTENDED FOR DIAGNOSTIC OR THERAPEUTIC USE"

Our Abpromise to you: Quality guaranteed and expert technical support

- Replacement or refund for products not performing as stated on the datasheet
- Valid for 12 months from date of delivery
- Response to your inquiry within 24 hours
- We provide support in Chinese, English, French, German, Japanese and Spanish
- Extensive multi-media technical resources to help you
- We investigate all quality concerns to ensure our products perform to the highest standards

If the product does not perform as described on this datasheet, we will offer a refund or replacement. For full details of the Abpromise, please visit <http://www.abcam.cn/abpromise> or contact our technical team.

Terms and conditions

- Guarantee only valid for products bought direct from Abcam or one of our authorized distributors