

Product datasheet

Anti-CARD12 antibody ab21301

2 图像

概述

产品名称	Anti-CARD12抗体
描述	兔多克隆抗体to CARD12
经测试应用	适用于: WB, ICC/IF
种属反应性	与反应: Human
免疫原	Synthetic peptide corresponding to amino acids near the C terminus (Human).
阳性对照	Human peripheral blood leukocyte cell lysate.

性能

形式	Liquid
存放说明	Shipped at 4°C. Store at +4°C.
存储溶液	Preservative: 0.02% Sodium Azide Constituents: PBS
纯度	Immunogen affinity purified
克隆	多克隆
同种型	IgG

应用

Our [Abpromise guarantee](#) covers the use of **ab21301** in the following tested applications.

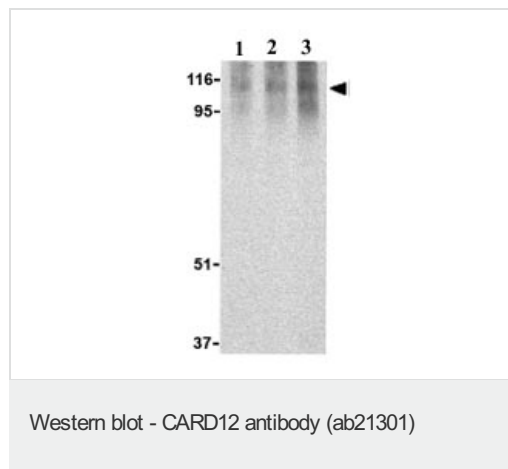
The application notes include recommended starting dilutions; optimal dilutions/concentrations should be determined by the end user.

应用	Ab评论	说明
WB		Use a concentration of 0.5 - 2 µg/ml. Detects a band of approximately 110 kDa (predicted molecular weight: 116 kDa).
ICC/IF		Use a concentration of 10 µg/ml.

脚标

功能	Plays a role in the promotion of apoptosis.
组织特异性	Isoform 2 is expressed ubiquitously, although highly expressed in lung and spleen. Isoform 1 is highly expressed in lung, followed by leukocytes especially monocytes, lymph node, colon, brain, prostate, placenta, spleen, bone marrow and fetal liver. Isoform 4 is only detected in brain.
序列相似性	Contains 1 CARD domain. Contains 14 LRR (leucine-rich) repeats. Contains 1 NACHT domain.
细胞定位	Cytoplasm. Cytoplasmic filaments.

图片



Lane 1 : Anti-CARD12 antibody (ab21301) at 0.5 µg/ml

Lane 2 : Anti-CARD12 antibody (ab21301) at 1 µg/ml

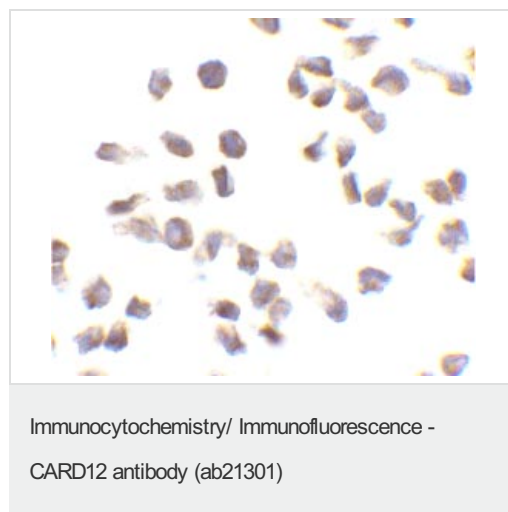
Lane 3 : Anti-CARD12 antibody (ab21301) at 2 µg/ml

Lane 1 : Human PBL lysate 15ug

Lane 2 : Human PBL lysate 15ug

Lane 3 : Human PBL lysate 15ug

Predicted band size : 116 kDa



ab21301 at 10µg/ml staining CARD12 in THP-1 cells by ICC/IF

Please note: All products are "FOR RESEARCH USE ONLY AND ARE NOT INTENDED FOR DIAGNOSTIC OR THERAPEUTIC USE"

Our Abpromise to you: Quality guaranteed and expert technical support

- Replacement or refund for products not performing as stated on the datasheet

- Valid for 12 months from date of delivery
- Response to your inquiry within 24 hours

- We provide support in Chinese, English, French, German, Japanese and Spanish
- Extensive multi-media technical resources to help you
- We investigate all quality concerns to ensure our products perform to the highest standards

If the product does not perform as described on this datasheet, we will offer a refund or replacement. For full details of the Abpromise, please visit <http://www.abcam.cn/abpromise> or contact our technical team.

Terms and conditions

- Guarantee only valid for products bought direct from Abcam or one of our authorized distributors