

Product datasheet

Anti-C3a / C3a des Arg antibody [K13/16] ab36385

4 References 4 图像

概述

产品名称	Anti-C3a / C3a des Arg抗体[K13/16]
描述	小鼠单克隆抗体[K13/16] to C3a / C3a des Arg
宿主	Mouse
特异性	Does not cross react with C4a or C5a.
经测试应用	适用于: ELISA, WB
种属反应性	与反应: Human
免疫原	Full length native protein (purified) corresponding to Human C3a/ C3a des Arg.
表位	Recognizes an epitope present on human C3, C3a and C3a(desArg).
常规说明	Effectively inhibits the biological activity of C3a in a guinea-pig platelet activation assay.

性能

形式	Liquid
存放说明	Shipped at 4°C. Store at +4°C short term (1-2 weeks). Upon delivery aliquot. Store at -20°C. Avoid freeze / thaw cycle.
存储溶液	Preservative: 15mM Sodium Azide Constituents: 0.5M Sodium chloride, 0.01M PBS, pH 7.4
纯度	Protein A purified
Primary antibody说明	Effectively inhibits the biological activity of C3a in a guinea-pig platelet activation assay.
克隆	单克隆
克隆编号	K13/16
同种型	IgG1
轻链类型	kappa

应用

Our [Abpromise guarantee](#) covers the use of **ab36385** in the following tested applications.

The application notes include recommended starting dilutions; optimal dilutions/concentrations should be determined by the end user.

应用	Ab 评论	说明
ELISA		1/32000.
WB		Use at an assay dependent concentration. Predicted molecular weight: 75, 110 kDa. <i>In vivo</i> , human C3 exists as a 185kDa protein, formed of two smaller proteins linked together via a disulfide bond. In Western blot the proteins will separate and be detected as bands at molecular weights of approximately 75kDa and 110kDa.

靶标

功能

C3 plays a central role in the activation of the complement system. Its processing by C3 convertase is the central reaction in both classical and alternative complement pathways. After activation C3b can bind covalently, via its reactive thioester, to cell surface carbohydrates or immune aggregates.

Derived from proteolytic degradation of complement C3, C3a anaphylatoxin is a mediator of local inflammatory process. It induces the contraction of smooth muscle, increases vascular permeability and causes histamine release from mast cells and basophilic leukocytes.

组织特异性

Plasma.

疾病相关

Defects in C3 are the cause of complement component 3 deficiency (C3D) [MIM:613779]. A rare defect of the complement classical pathway. Patients develop recurrent, severe, pyogenic infections because of ineffective opsonization of pathogens. Some patients may also develop autoimmune disorders, such as arthralgia and vasculitic rashes, lupus-like syndrome and membranoproliferative glomerulonephritis.

Genetic variation in C3 is associated with susceptibility to age-related macular degeneration type 9 (ARMD9) [MIM:611378]. ARMD is a multifactorial eye disease and the most common cause of irreversible vision loss in the developed world. In most patients, the disease is manifest as ophthalmoscopically visible yellowish accumulations of protein and lipid that lie beneath the retinal pigment epithelium and within an elastin-containing structure known as Bruch membrane.

Defects in C3 are a cause of susceptibility to hemolytic uremic syndrome atypical type 5 (AHUS5) [MIM:612925]. An atypical form of hemolytic uremic syndrome. It is a complex genetic disease characterized by microangiopathic hemolytic anemia, thrombocytopenia, renal failure and absence of episodes of enterocolitis and diarrhea. In contrast to typical hemolytic uremic syndrome, atypical forms have a poorer prognosis, with higher death rates and frequent progression to end-stage renal disease. Note=Susceptibility to the development of atypical hemolytic uremic syndrome can be conferred by mutations in various components of or regulatory factors in the complement cascade system. Other genes may play a role in modifying the phenotype.

序列相似性

Contains 1 anaphylatoxin-like domain.

Contains 1 NTR domain.

翻译后修饰

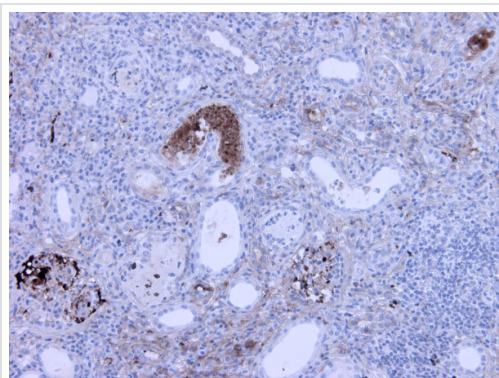
C3b is rapidly split in two positions by factor I and a cofactor to form iC3b (inactivated C3b) and C3f which is released. Then iC3b is slowly cleaved (possibly by factor I) to form C3c (beta chain + alpha' chain fragment 1 + alpha' chain fragment 2), C3dg and C3f. Other proteases produce other fragments such as C3d or C3g.

Phosphorylation sites are present in the extracellular medium.

细胞定位

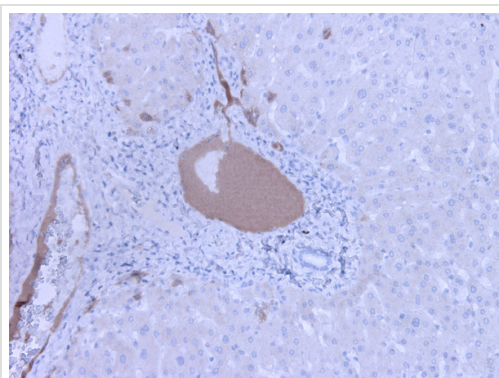
Secreted.

图片



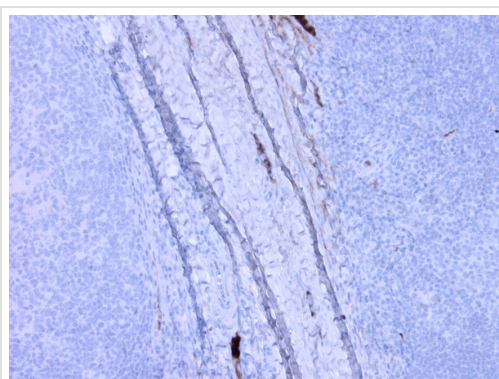
Immunohistochemistry (Formalin/PFA-fixed paraffin-embedded sections) - Anti-C3a / C3a des Arg antibody [K13/16] (ab36385)

Immunohistochemistry (Formalin/PFA-fixed paraffin-embedded sections) analysis of human kidney tissue labelling C3a / C3a des Arg with ab36385 at a dilution of 1/150. Strong staining is visible in the of veins of nephritis.



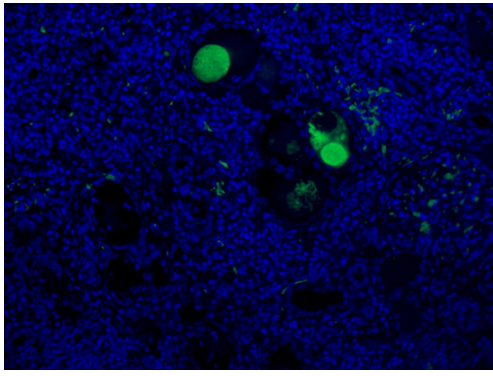
Immunohistochemistry (Formalin/PFA-fixed paraffin-embedded sections) - Anti-C3a / C3a des Arg antibody [K13/16] (ab36385)

Immunohistochemistry (Formalin/PFA-fixed paraffin-embedded sections) analysis of human liver tissue labelling C3a / C3a des Arg with ab36385 at a dilution of 1/150. Strong staining is visible in the veins.



Immunohistochemistry (Formalin/PFA-fixed paraffin-embedded sections) - Anti-C3a / C3a des Arg antibody [K13/16] (ab36385)

Immunohistochemistry (Formalin/PFA-fixed paraffin-embedded sections) analysis of human tonsil tissue labelling C3a / C3a des Arg with ab36385 at a dilution of 1/150. Strong staining is visible in the lumen of veins.



Immunohistochemistry (Formalin/PFA-fixed paraffin-embedded sections) analysis of human kidney tissue labelling C3a / C3a des Arg with ab36385 at a dilution of 1/75. Strong staining is visible in the of veins of nephritis.

Immunohistochemistry (Formalin/PFA-fixed paraffin-embedded sections) - Anti-C3a / C3a des Arg antibody [K13/16] (ab36385)

Please note: All products are "FOR RESEARCH USE ONLY AND ARE NOT INTENDED FOR DIAGNOSTIC OR THERAPEUTIC USE"

Our Abpromise to you: Quality guaranteed and expert technical support

- Replacement or refund for products not performing as stated on the datasheet
- Valid for 12 months from date of delivery
- Response to your inquiry within 24 hours
- We provide support in Chinese, English, French, German, Japanese and Spanish
- Extensive multi-media technical resources to help you
- We investigate all quality concerns to ensure our products perform to the highest standards

If the product does not perform as described on this datasheet, we will offer a refund or replacement. For full details of the Abpromise, please visit <http://www.abcam.cn/abpromise> or contact our technical team.

Terms and conditions

- Guarantee only valid for products bought direct from Abcam or one of our authorized distributors