


Product datasheet

Anti-BUD13 antibody ab117823

2 图像

概述

产品名称	Anti-BUD13抗体
描述	兔多克隆抗体to BUD13
经测试应用	适用于: WB, IP
种属反应性	与反应: Human 预测可用于: Chimpanzee, Baboon, Orangutan 
免疫原	Synthetic peptide, corresponding to a region within amino acids 150-200 of Human BUD13 according to NP_116114.1
阳性对照	Whole cell lysate from HeLa cells.

性能

形式	Liquid
存放说明	Shipped at 4°C. Upon delivery aliquot and store at -20°C. Avoid freeze / thaw cycles.
存储溶液	Preservative: 0.09% Sodium azide Constituent: 99% Tris citrate/phosphate Note: pH: 7-8
纯度	Immunogen affinity purified
克隆	多克隆
同种型	IgG

应用

Our [Abpromise guarantee](#) covers the use of **ab117823** in the following tested applications.

The application notes include recommended starting dilutions; optimal dilutions/concentrations should be determined by the end user.

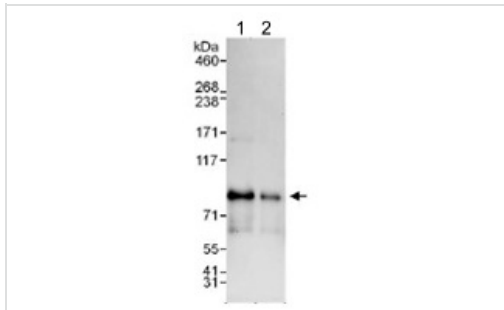
应用	Ab评论	说明
WB		1/2000 - 1/10000. Predicted molecular weight: 71 kDa.
IP		Use at 2-10 µg/mg of lysate.

靶标

序列相似性

Belongs to the CWC26 family.

图片



Western blot - Anti-BUD13 antibody (ab117823)

All lanes : Anti-BUD13 antibody (ab117823)
at 0.1 µg/ml

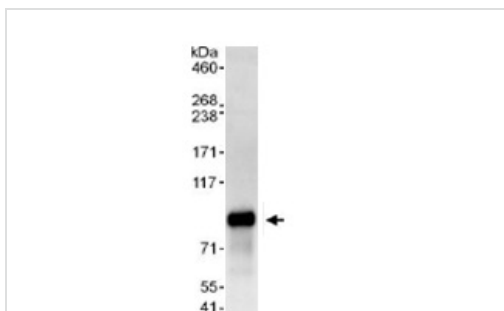
Lane 1 : Whole HeLa cell lysate at 50 µg

Lane 2 : Whole HeLa cell lysate at 15 µg

Developed using the ECL technique

Predicted band size : 71 kDa

Exposure time : 3 minutes



Immunoprecipitation - Anti-BUD13 antibody
(ab117823)

Detection of Human BUD13 by
Immunoprecipitation in whole cell lysate from
HeLa cells (1 mg for IP, 20% of IP loaded)
using ab117823 at 6 µg/mg of lysate.

Subsequent WB detection was done using
ab117823 at 1 µg/ml. Detection:

Chemiluminescence with exposure time of 10
seconds.

Please note: All products are "FOR RESEARCH USE ONLY AND ARE NOT INTENDED FOR DIAGNOSTIC OR THERAPEUTIC USE"

Our Abpromise to you: Quality guaranteed and expert technical support

- Replacement or refund for products not performing as stated on the datasheet
- Valid for 12 months from date of delivery
- Response to your inquiry within 24 hours
- We provide support in Chinese, English, French, German, Japanese and Spanish
- Extensive multi-media technical resources to help you
- We investigate all quality concerns to ensure our products perform to the highest standards

If the product does not perform as described on this datasheet, we will offer a refund or replacement. For full details of the Abpromise,

please visit <http://www.abcam.cn/abpromise> or contact our technical team.

Terms and conditions

- Guarantee only valid for products bought direct from Abcam or one of our authorized distributors