

Product datasheet

Anti-BTG3 antibody ab112938

1 References 1 图像

概述

产品名称	Anti-BTG3抗体
描述	兔多克隆抗体to BTG3
宿主	Rabbit
经测试应用	适用于: WB
种属反应性	与反应: Human
免疫原	Synthetic peptide conjugated to KLH, corresponding to a region within internal sequence amino acids 107-137 of Human BTG3 (NP_006797.3, NP_001124386.1).
阳性对照	HeLa cell lysate.

性能

形式	Liquid
存放说明	Shipped at 4°C. Store at 4°C (up to 6 months). Store at -20°C long term.
存储溶液	Preservative: 0.09% Sodium azide Constituent: 99% PBS
纯度	Immunogen affinity purified
纯化说明	ab112938 was purified through a protein A column, followed by peptide affinity purification.
克隆	多克隆
同种型	IgG

应用

Our [Abpromise guarantee](#) covers the use of **ab112938** in the following tested applications.

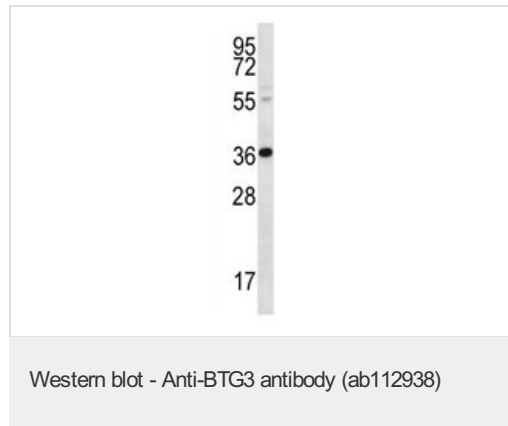
The application notes include recommended starting dilutions; optimal dilutions/concentrations should be determined by the end user.

应用	Ab评论	说明
WB		1/100 - 1/500. Predicted molecular weight: 29 kDa.

靶标

功能	Overexpression impairs serum-induced cell cycle progression from the G0/G1 to S phase.
组织特异性	Ubiquitous. High expression in the ventricular zone of the developing central nervous system. High in ovary, testis, prostate, thymus and lung.
序列相似性	Belongs to the BTG family.
发展阶段	Expression is cell cycle dependent with the highest levels at the end of G1 phase, peaking at the G1-S transition.

图片



Anti-BTG3 antibody (ab112938) at 1/100
dilution + HeLa cell lysate at 35 µg/ml

Predicted band size: 29 kDa

Please note: All products are "FOR RESEARCH USE ONLY AND ARE NOT INTENDED FOR DIAGNOSTIC OR THERAPEUTIC USE"

Our Abpromise to you: Quality guaranteed and expert technical support

- Replacement or refund for products not performing as stated on the datasheet
- Valid for 12 months from date of delivery
- Response to your inquiry within 24 hours
- We provide support in Chinese, English, French, German, Japanese and Spanish
- Extensive multi-media technical resources to help you
- We investigate all quality concerns to ensure our products perform to the highest standards

If the product does not perform as described on this datasheet, we will offer a refund or replacement. For full details of the Abpromise, please visit <http://www.abcam.cn/abpromise> or contact our technical team.

Terms and conditions

- Guarantee only valid for products bought direct from Abcam or one of our authorized distributors