

Product datasheet

Anti-BASC4 antibody ab75000

2 图像

概述

| | |
|-------|---|
| 产品名称 | Anti-BASC4抗体 |
| 描述 | 兔多克隆抗体to BASC4 |
| 特异性 | ab75000 detects endogenous levels of total BASC4 protein. |
| 经测试应用 | 适用于: WB, ELISA, IHC-P |
| 种属反应性 | 与反应: Human |
| 免疫原 | Synthetic peptide derived from an internal region of the human protein. |
| 阳性对照 | IHC-P: Human tonsil tissue WB: K562 cell extract |

性能

| | |
|------|---|
| 形式 | Liquid |
| 存放说明 | Shipped at 4°C. Upon delivery aliquot and store at -20°C. Avoid freeze / thaw cycles. |
| 存储溶液 | Preservative: 0.02% Sodium Azide Constituents: 50% Glycerol, PBS (without Mg ²⁺ and Ca ²⁺), 150mM Sodium chloride, pH 7.4 |
| 纯度 | Immunogen affinity purified |
| 纯化说明 | The antibody was affinity purified from rabbit antiserum by affinity chromatography using epitope specific immunogen. |
| 克隆 | 多克隆 |
| 同种型 | IgG |

应用

Our [Abpromise guarantee](#) covers the use of **ab75000** in the following tested applications.

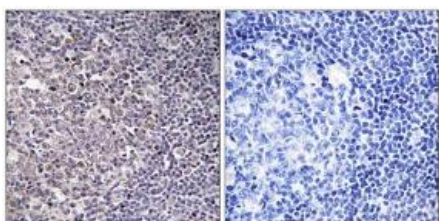
The application notes include recommended starting dilutions; optimal dilutions/concentrations should be determined by the end user.

| 应用 | Ab评论 | 说明 |
|-------|------|---|
| WB | | 1/500 - 1/1000. Predicted molecular weight: 23 kDa. |
| ELISA | | 1/20000. |
| IHC-P | | 1/50 - 1/100. |

靶标

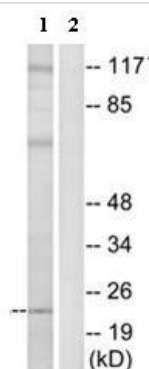
| | |
|-------|---|
| 组织特异性 | Brain, thymus, spleen, kidney and placenta. Overexpressed in most breast cancer cell lines. |
| 疾病相关 | Note=A chromosomal aberration involving BCAS4 has been found in some breast carcinoma cell lines. Translocation t(17;20)(q23;q13) with BCAS3. |
| 序列相似性 | Belongs to the cappuccino family. |
| 细胞定位 | Cytoplasm. |

Anti-BASC4 antibody 图像



Immunohistochemistry (Formalin/PFA-fixed paraffin-embedded sections) - BASC4 antibody (ab75000)

Immunohistochemical analysis of paraffin embedded human tonsil tissue using ab75000 at 1/50 dilution. Right panel was also treated with immunising peptide.



Western blot - BASC4 antibody (ab75000)

All lanes : Anti-BASC4 antibody (ab75000) at 1/500 dilution

Lane 1 : K562 cell extract

Lane 2 : K562 cell extract with immunising peptide at 10 µg

Lysates/proteins at 5 µg per lane.

Predicted band size : 23 kDa

Observed band size : 23 kDa

Additional bands at : 117 kDa, 70 kDa. We are unsure as to the identity of these extra bands.

Please note: All products are "FOR RESEARCH USE ONLY AND ARE NOT INTENDED FOR DIAGNOSTIC OR THERAPEUTIC USE"

Our Abpromise to you: Quality guaranteed and expert technical support

- Replacement or refund for products not performing as stated on the datasheet
- Valid for 12 months from date of delivery
- Response to your inquiry within 24 hours
- We provide support in Chinese, English, French, German, Japanese and Spanish
- Extensive multi-media technical resources to help you
- We investigate all quality concerns to ensure our products perform to the highest standards

If the product does not perform as described on this datasheet, we will offer a refund or replacement. For full details of the Abpromise, please visit <http://www.abcam.cn/abpromise> or contact our technical team.

Terms and conditions

- Guarantee only valid for products bought direct from Abcam or one of our authorized distributors