

Product datasheet

Anti-BAP31 antibody [EPR3878(2)] ab109304

重组 RabMAb

4 图像

概述

产品名称	Anti-BAP31抗体[EPR3878(2)]
描述	兔单克隆抗体[EPR3878(2)] to BAP31
宿主	Rabbit
经测试应用	适用于: WB, IHC-P, Flow Cyt, ICC/IF 不适用于: IP
种属反应性	与反应: Mouse, Human
免疫原	within Human BAP31 aa 150 to the C-terminus. The exact sequence is proprietary. Database link: P51572
阳性对照	HeLa cell lysate, Human placenta tissue lysate, NCCIT cell lysate, Human kidney tissue, Human brain tissue, HeLa cells.
常规说明	Rat: We have preliminary internal testing data to indicate this antibody may not react with this species. Please contact us for more information. Our RabMAb [®] technology is a patented hybridoma-based technology for making rabbit monoclonal antibodies. For details on our patents, please refer to RabMAb[®] patents This product is a recombinant rabbit monoclonal antibody.

性能

形式	Liquid
存放说明	Shipped at 4°C. Store at -20°C. Stable for 12 months at -20°C.
存储溶液	PBS 49%,Sodium azide 0.01%,Glycerol 50%,BSA 0.05%
纯度	Tissue culture supernatant
克隆	单克隆
克隆编号	EPR3878(2)
同种型	IgG

应用

Our [Abpromise guarantee](#) covers the use of **ab109304** in the following tested applications.

The application notes include recommended starting dilutions; optimal dilutions/concentrations should be determined by the end user.

应用	Ab评论	说明
WB		1/1000 - 1/10000. Predicted molecular weight: 28 kDa.
IHC-P		1/250 - 1/500.
Flow Cyt		1/100 - 1/500. ab172730 - Rabbit monoclonal IgG, is suitable for use as an isotype control with this antibody.
ICC/IF		1/100 - 1/250.

应用说明 Is unsuitable for IP.

靶标

功能 May play a role in anterograde transport of membrane proteins from the endoplasmic reticulum to the Golgi. May be involved in CASP8-mediated apoptosis.

组织特异性 Ubiquitous.

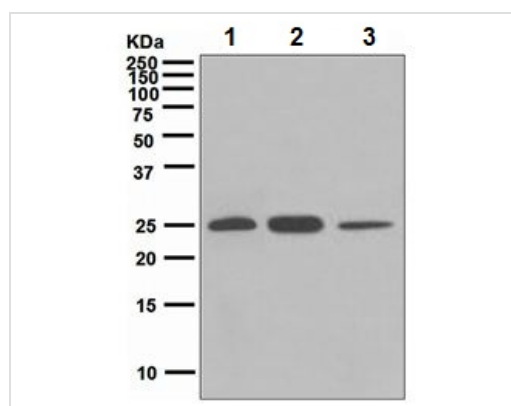
疾病相关 Note=BCAP31 is deleted in the chromosome Xq28 deletion syndrome which involves BCAP31 and the and the promoter region of ABCD1.

序列相似性 Belongs to the BCAP29/BCAP31 family.

翻译后修饰 Cleaved by CASP8 and other caspases.

细胞定位 Endoplasmic reticulum membrane. Endoplasmic reticulum-Golgi intermediate compartment membrane. May shuttle between the ER and the intermediate compartment/cis-Golgi complex.

图片



Western blot - Anti-BAP31 antibody [EPR3878(2)] (ab109304)

All lanes : Anti-BAP31 antibody [EPR3878(2)] (ab109304) at 1/1000 dilution

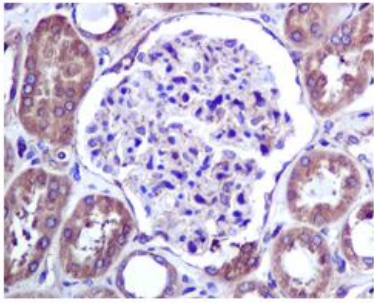
Lane 1 : HeLa cell lysate

Lane 2 : Human placenta tissue lysate

Lane 3 : NCCIT cell lysate

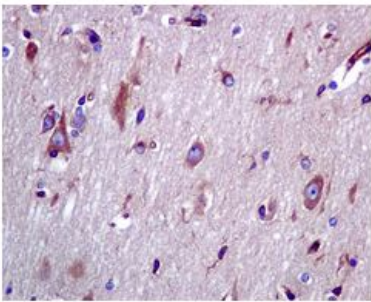
Lysates/proteins at 10 µg per lane.

Predicted band size: 28 kDa



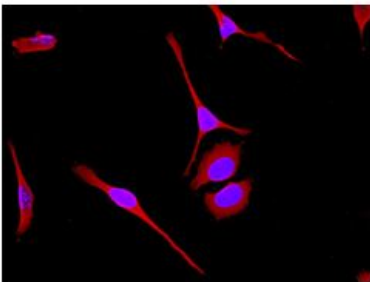
ab109304, at 1/250 dilution, staining Human kidney tissue by immunohistochemistry.

Immunohistochemistry (Formalin/PFA-fixed paraffin-embedded sections) - Anti-BAP31 antibody [EPR3878(2)] (ab109304)



ab109304, at 1/250 dilution, staining Human brain tissue by immunohistochemistry.

Immunohistochemistry (Formalin/PFA-fixed paraffin-embedded sections) - Anti-BAP31 antibody [EPR3878(2)] (ab109304)



ab109304, at 1/100 dilution, staining HeLa cells by immunofluorescence.

Immunocytochemistry/ Immunofluorescence - Anti-BAP31 antibody [EPR3878(2)] (ab109304)

Please note: All products are "FOR RESEARCH USE ONLY AND ARE NOT INTENDED FOR DIAGNOSTIC OR THERAPEUTIC USE"

Our Abpromise to you: Quality guaranteed and expert technical support

- Replacement or refund for products not performing as stated on the datasheet
- Valid for 12 months from date of delivery
- Response to your inquiry within 24 hours

- We provide support in Chinese, English, French, German, Japanese and Spanish
- Extensive multi-media technical resources to help you
- We investigate all quality concerns to ensure our products perform to the highest standards

If the product does not perform as described on this datasheet, we will offer a refund or replacement. For full details of the Abpromise, please visit <http://www.abcam.cn/abpromise> or contact our technical team.

Terms and conditions

- Guarantee only valid for products bought direct from Abcam or one of our authorized distributors