


Product datasheet

Anti-Aquaporin 2 (phospho S261) antibody ab64154

1 References 1 图像

概述

产品名称	Anti-Aquaporin 2 (phospho S261)抗体
描述	兔多克隆抗体 to Aquaporin 2 (phospho S261)
宿主	Rabbit
特异性	This antibody is specific for ~29k Aquaporin 2 protein phosphorylated at Ser261. It also recognizes the glycosylated form of Aquaporin 2 at ~ 37k. Immunolabeling of the Aquaporin 2 band is blocked by preadsorption with the phospho peptide used as antigen but not by the corresponding dephospho peptide.
经测试应用	适用于: WB, Flow Cyt
种属反应性	与反应: Rat 预测可用于: Mouse, Chicken, Cow, Dog, Human, Non human primates 
免疫原	Phosphopeptide corresponding to amino acid residues surrounding the phospho Serine 261 of rat Aquaporin 2.
阳性对照	Rat kidney lysate.

性能

形式	Liquid
存放说明	Shipped at 4°C. Store at +4°C short term (1-2 weeks). Upon delivery aliquot. Store at -20°C or -80°C. Avoid freeze / thaw cycle.
存储溶液	Preservative: None Constituents: 50% Glycerol, 0.1mg/ml BSA, 150mM Sodium chloride, 10mM HEPES, pH 7.5
纯度	Immunogen affinity purified
克隆	多克隆
同种型	IgG

应用

Our [Abpromise guarantee](#) covers the use of **ab64154** in the following tested applications.

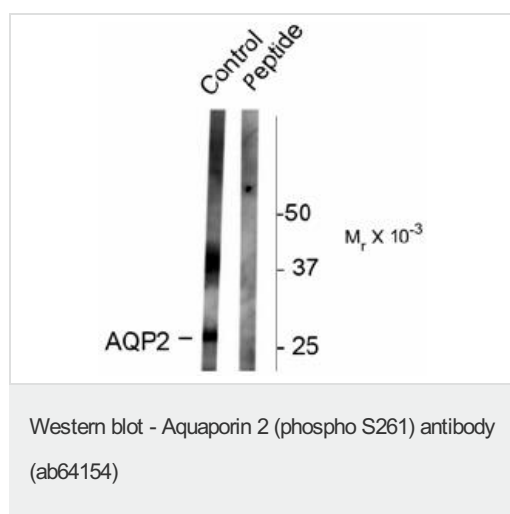
The application notes include recommended starting dilutions; optimal dilutions/concentrations should be determined by the end user.

应用	Ab评论	说明
WB		1/1000. Detects a band of approximately 29 kDa (predicted molecular weight: 29 kDa).
Flow Cyt		Use at an assay dependent concentration. PubMed: 20826573 ab171870 - Rabbit polyclonal IgG, is suitable for use as an isotype control with this antibody.

靶标

功能	Forms a water-specific channel that provides the plasma membranes of renal collecting duct with high permeability to water, thereby permitting water to move in the direction of an osmotic gradient.
组织特异性	Expressed in renal collecting tubules.
疾病相关	Diabetes insipidus, nephrogenic, autosomal
序列相似性	Belongs to the MIP/aquaporin (TC 1.A.8) family.
结构域	Aquaporins contain two tandem repeats each containing three membrane-spanning domains and a pore-forming loop with the signature motif Asn-Pro-Ala (NPA).
翻译后修饰	Ser-256 phosphorylation is necessary and sufficient for expression at the apical membrane. Endocytosis is not phosphorylation-dependent.
细胞定位	Apical cell membrane. Basolateral cell membrane. Cytoplasmic vesicle membrane. Golgi apparatus, trans-Golgi network membrane. Shuttles from vesicles to the apical membrane. Vasopressin-regulated phosphorylation is required for translocation to the apical cell membrane. PLEKHA8/FAPP2 is required to transport AQP2 from the TGN to sites where AQP2 is phosphorylated.

图片



All lanes : Anti-Aquaporin 2 (phospho S261) antibody (ab64154) at 1/1000 dilution

Lane 1 : Rat kidney lysate

Lane 2 : Rat kidney lysate, with blocking peptide

Predicted band size: 29 kDa

Observed band size: 29,37 kDa

Please note: All products are "FOR RESEARCH USE ONLY AND ARE NOT INTENDED FOR DIAGNOSTIC OR THERAPEUTIC USE"

Our Abpromise to you: Quality guaranteed and expert technical support

- Replacement or refund for products not performing as stated on the datasheet
- Valid for 12 months from date of delivery
- Response to your inquiry within 24 hours

- We provide support in Chinese, English, French, German, Japanese and Spanish
- Extensive multi-media technical resources to help you
- We investigate all quality concerns to ensure our products perform to the highest standards

If the product does not perform as described on this datasheet, we will offer a refund or replacement. For full details of the Abpromise, please visit <http://www.abcam.cn/abpromise> or contact our technical team.

Terms and conditions

- Guarantee only valid for products bought direct from Abcam or one of our authorized distributors