


Product datasheet

Anti-Annexin A2 antibody ab40943

2 References 1 图像

概述

产品名称	Anti-Annexin A2抗体
描述	兔多克隆抗体to Annexin A2
经测试应用	适用于: WB
种属反应性	与反应: Human 预测可用于: Mouse, Rat, Sheep, Chicken, Cow, Dog, Xenopus laevis 
免疫原	Synthetic peptide conjugated to KLH derived from within residues 200 - 300 of Human Annexin II. 参阅Abcam的专有抗源政策(Peptide available as <a href="#">ab41801</a> .)
阳性对照	This antibody gave a positive signal in the following whole cell lysates: HeLa (Human epithelial carcinoma cell line), HEK293 (Human embryonic kidney cell line), HepG2 (Human hepatocellular liver carcinoma cell line).

性能

形式	Liquid
存放说明	Shipped at 4°C. Store at +4°C short term (1-2 weeks). Upon delivery aliquot. Store at -20°C or -80°C. Avoid freeze / thaw cycle.
存储溶液	Preservative: 0.02% Sodium Azide Constituents: 1% BSA, PBS, pH 7.4
纯度	Immunogen affinity purified
克隆	多克隆
同种型	IgG

应用

Our [Abpromise guarantee](#) covers the use of **ab40943** in the following tested applications.

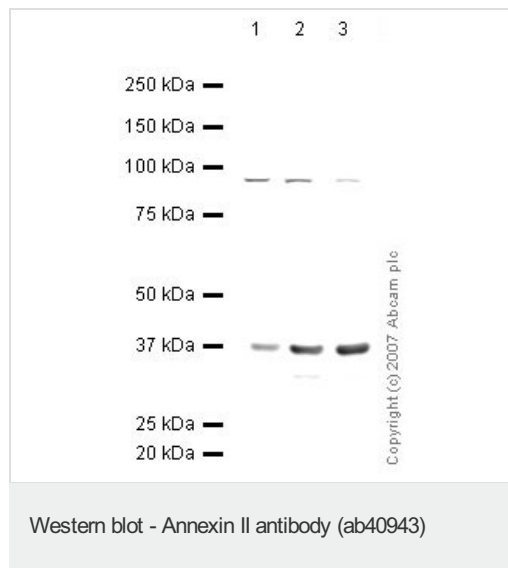
The application notes include recommended starting dilutions; optimal dilutions/concentrations should be determined by the end user.

应用	Ab评论	说明
WB		Use a concentration of 1 µg/ml. Detects a band of approximately 38 kDa (predicted molecular weight: 38 kDa).

## 靶标

<b>功能</b>	Calcium-regulated membrane-binding protein whose affinity for calcium is greatly enhanced by anionic phospholipids. It binds two calcium ions with high affinity. May be involved in heat-stress response.
<b>序列相似性</b>	Belongs to the annexin family. Contains 4 annexin repeats.
<b>结构域</b>	A pair of annexin repeats may form one binding site for calcium and phospholipid.
<b>翻译后修饰</b>	Phosphorylation of Tyr-24 enhances heat stress-induced translocation to the cell surface. ISGylated.
<b>细胞定位</b>	Secreted > extracellular space > extracellular matrix > basement membrane. Melanosome. In the lamina beneath the plasma membrane. Identified by mass spectrometry in melanosome fractions from stage I to stage IV. Translocated from the cytoplasm to the cell surface through a Golgi-independent mechanism.

## 图片



**All lanes :** Anti-Annexin A2 antibody (ab40943) at 1 µg/ml

**Lane 1 :** HeLa (Human epithelial carcinoma cell line) Whole Cell Lysate

**Lane 2 :** HEK293 (Human embryonic kidney cell line) Whole Cell Lysate

**Lane 3 :** HepG2 (Human hepatocellular liver carcinoma cell line) Whole Cell Lysate

Lysates/proteins at 10 µg per lane.

### Secondary

IRDye 680 Conjugated Goat Anti-Rabbit IgG (H+L) at 1/10000 dilution

Performed under reducing conditions.

**Predicted band size :** 38 kDa

**Observed band size :** 38 kDa

**Additional bands at :** 95 kDa. We are unsure as to the identity of these extra bands.

**Please note:** All products are "FOR RESEARCH USE ONLY AND ARE NOT INTENDED FOR DIAGNOSTIC OR THERAPEUTIC USE"

**Our Abpromise to you: Quality guaranteed and expert technical support**

- Replacement or refund for products not performing as stated on the datasheet
- Valid for 12 months from date of delivery
- Response to your inquiry within 24 hours
  
- We provide support in Chinese, English, French, German, Japanese and Spanish
- Extensive multi-media technical resources to help you
- We investigate all quality concerns to ensure our products perform to the highest standards

If the product does not perform as described on this datasheet, we will offer a refund or replacement. For full details of the Abpromise, please visit <http://www.abcam.cn/abpromise> or contact our technical team.

### **Terms and conditions**

---

- Guarantee only valid for products bought direct from Abcam or one of our authorized distributors