

Product datasheet

# Anti-Angiotensin Converting Enzyme 2 antibody [EPR4435(2)] ab108252

 RabMAb

3 References 3 图像

概述

产品名称	Anti-Angiotensin Converting Enzyme 2抗体[EPR4435(2)]
描述	兔单克隆抗体[EPR4435(2)] to Angiotensin Converting Enzyme 2
宿主	Rabbit
经测试应用	适用于: WB, IP, IHC-P, ICC 不适用于: Flow Cyt
种属反应性	与反应: Mouse, Rat, Human
免疫原	Synthetic peptide within Human Angiotensin Converting Enzyme 2 aa 200-300 (extracellular). The exact sequence is proprietary. (Peptide available as <a href="#">ab198988</a> )
阳性对照	Fetal kidney and Human testis lysate; Human kidney tissue; Human testis tissue
常规说明	

Our RabMAb<sup>®</sup> technology is a patented hybridoma-based technology for making rabbit monoclonal antibodies. For details on our patents, please refer to [RabMAb<sup>®</sup> patents](#)

**We are constantly working hard to ensure we provide our customers with best in class antibodies. As a result of this work we are pleased to now offer this antibody in purified format. We are in the process of updating our datasheets. The purified format is designated 'PUR' on our product labels. If you have any questions regarding this update, please contact our Scientific Support team.**

This product is a recombinant rabbit monoclonal antibody.

性能

形式	Liquid
存放说明	Shipped at 4°C. Store at -20°C. Stable for 12 months at -20°C.
存储溶液	PBS 49%,Sodium azide 0.01%,Glycerol 50%,BSA 0.05%
纯度	Protein A purified

克隆	单克隆
克隆编号	EPR4435(2)
同种型	IgG

## 应用

Our [Abpromise guarantee](#) covers the use of **ab108252** in the following tested applications.

The application notes include recommended starting dilutions; optimal dilutions/concentrations should be determined by the end user.

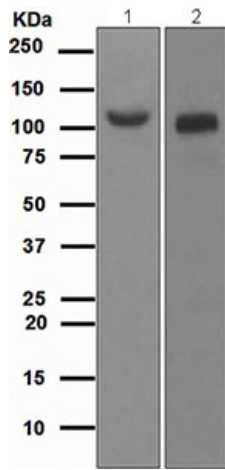
应用	Ab评论	说明
WB		1/1000 - 1/10000. Predicted molecular weight: 92 kDa.
IP		1/10 - 1/100.
IHC-P		1/100 - 1/250. Perform heat mediated antigen retrieval with citrate buffer pH 6 before commencing with IHC staining protocol.
ICC		1/50 - 1/100.

**应用说明** Is unsuitable for Flow Cyt.

## 靶标

<b>功能</b>	Carboxypeptidase which converts angiotensin I to angiotensin 1-9, a peptide of unknown function, and angiotensin II to angiotensin 1-7, a vasodilator. Also able to hydrolyze apelin-13 and dynorphin-13 with high efficiency. May be an important regulator of heart function. In case of human coronaviruses SARS and HCoV-NL63 infections, serve as functional receptor for the spike glycoprotein of both coronaviruses.
<b>组织特异性</b>	Expressed in endothelial cells from small and large arteries, and in arterial smooth muscle cells. Expressed in lung alveolar epithelial cells, enterocytes of the small intestine, Leydig cells and Sertoli cells (at protein level). Expressed in heart, kidney, testis, and gastrointestinal system.
<b>序列相似性</b>	Belongs to the peptidase M2 family.
<b>翻译后修饰</b>	N-glycosylation on Asn-90 may limit SARS infectivity.
<b>细胞定位</b>	Secreted and Cell membrane.

## 图片



Western blot - Anti-Angiotensin Converting Enzyme 2 antibody [EPR4435(2)] (ab108252)

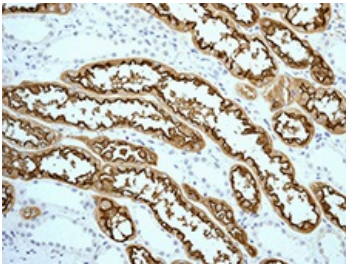
**All lanes :** Anti-Angiotensin Converting Enzyme 2 antibody [EPR4435(2)] (ab108252) at 1/1000 dilution

**Lane 1 :** Fetal kidney lysate

**Lane 2 :** Human testis lysate

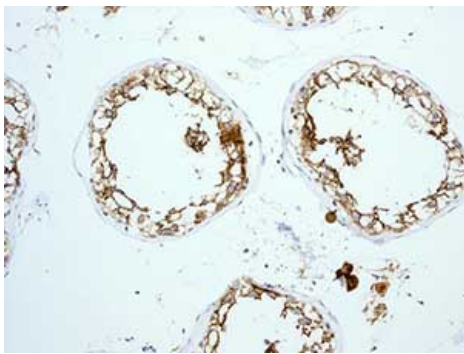
Lysates/proteins at 10 µg per lane.

**Predicted band size:** 92 kDa



Immunohistochemistry (Formalin/PFA-fixed paraffin-embedded sections) - Anti-Angiotensin Converting Enzyme 2 antibody [EPR4435(2)] (ab108252)

ab108252, at 1/100 dilution, staining Angiotensin Converting Enzyme 2 in paraffin-embedded Human kidney tissue by Immunohistochemistry.



Immunohistochemistry (Formalin/PFA-fixed paraffin-embedded sections) - Anti-Angiotensin Converting Enzyme 2 antibody [EPR4435(2)] (ab108252)

ab108252, at 1/100 dilution, staining Angiotensin Converting Enzyme 2 in paraffin-embedded Human testis tissue by Immunohistochemistry

**Please note:** All products are "FOR RESEARCH USE ONLY AND ARE NOT INTENDED FOR DIAGNOSTIC OR THERAPEUTIC USE"

- Replacement or refund for products not performing as stated on the datasheet
- Valid for 12 months from date of delivery
- Response to your inquiry within 24 hours
  
- We provide support in Chinese, English, French, German, Japanese and Spanish
- Extensive multi-media technical resources to help you
- We investigate all quality concerns to ensure our products perform to the highest standards

If the product does not perform as described on this datasheet, we will offer a refund or replacement. For full details of the Abpromise, please visit <http://www.abcam.cn/abpromise> or contact our technical team.

### **Terms and conditions**

---

- Guarantee only valid for products bought direct from Abcam or one of our authorized distributors