

Product datasheet

# Anti-Angiotensin Converting Enzyme 1 antibody [EPR2757] ab75762

**重组** RabMAb

3 References 3 图像

**概述**

<b>产品名称</b>	Anti-Angiotensin Converting Enzyme 1抗体[EPR2757]
<b>描述</b>	兔单克隆抗体[EPR2757] to Angiotensin Converting Enzyme 1
<b>经测试应用</b>	<b>适用于:</b> WB, IHC-P <b>不适用于:</b> ICC or IP
<b>种属反应性</b>	<b>与反应:</b> Mouse, Human
<b>免疫原</b>	within Human Angiotensin Converting Enzyme 1 aa 1250 to the C-terminus (C terminal). The exact sequence is proprietary. Database link: <a href="#">P12821</a>
<b>阳性对照</b>	Fetal kidney, fetal heart and fetal lung lysates; human kidney and spleen tissues.
<b>常规说明</b>	This product is a recombinant rabbit monoclonal antibody.  Rat: We have preliminary internal testing data to indicate this antibody may not react with these species. Please contact us for more information.  Our RabMAb <sup>®</sup> technology is a patented hybridoma-based technology for making rabbit monoclonal antibodies. For details on our patents, please refer to <a href="#">RabMAb<sup>®</sup> patents</a>

**性能**

<b>形式</b>	Liquid
<b>存放说明</b>	Shipped at 4°C. Upon delivery aliquot and store at -20°C. Avoid freeze / thaw cycles.
<b>存储溶液</b>	PBS 49%,Sodium azide 0.01%,Glycerol 50%,BSA 0.05%
<b>纯度</b>	Tissue culture supernatant
<b>克隆</b>	单克隆
<b>克隆编号</b>	EPR2757
<b>同种型</b>	IgG

**应用**

Our [Abpromise guarantee](#) covers the use of **ab75762** in the following tested applications.

The application notes include recommended starting dilutions; optimal dilutions/concentrations should be determined by the end user.

应用	Ab评论	说明
WB		1/500 - 1/1000. Detects a band of approximately 195 kDa (predicted molecular weight: 150 kDa).
IHC-P		1/100 - 1/250. Perform heat mediated antigen retrieval before commencing with IHC staining protocol.

**应用说明** Is unsuitable for ICC or IP.

## 靶标

**功能** Converts angiotensin I to angiotensin II by release of the terminal His-Leu, this results in an increase of the vasoconstrictor activity of angiotensin. Also able to inactivate bradykinin, a potent vasodilator. Has also a glycosidase activity which releases GPI-anchored proteins from the membrane by cleaving the mannose linkage in the GPI moiety.

**组织特异性** Ubiquitously expressed, with highest levels in lung, kidney, heart, gastrointestinal system and prostate. Isoform Testis-specific is expressed in spermatocytes and adult testis.

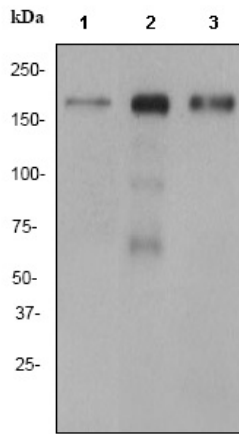
**疾病相关** Ischemic stroke (ISCHSTR) [MIM:601367]: A stroke is an acute neurologic event leading to death of neural tissue of the brain and resulting in loss of motor, sensory and/or cognitive function. Ischemic strokes, resulting from vascular occlusion, is considered to be a highly complex disease consisting of a group of heterogeneous disorders with multiple genetic and environmental risk factors. Note=Disease susceptibility is associated with variations affecting the gene represented in this entry.  
Renal tubular dysgenesis (RTD) [MIM:267430]: Autosomal recessive severe disorder of renal tubular development characterized by persistent fetal anuria and perinatal death, probably due to pulmonary hypoplasia from early-onset oligohydramnios (the Potter phenotype). Note=The disease is caused by mutations affecting the gene represented in this entry.  
Microvascular complications of diabetes 3 (MVCD3) [MIM:612624]: Pathological conditions that develop in numerous tissues and organs as a consequence of diabetes mellitus. They include diabetic retinopathy, diabetic nephropathy leading to end-stage renal disease, and diabetic neuropathy. Diabetic retinopathy remains the major cause of new-onset blindness among diabetic adults. It is characterized by vascular permeability and increased tissue ischemia and angiogenesis. Note=Disease susceptibility is associated with variations affecting the gene represented in this entry.  
Intracerebral hemorrhage (ICH) [MIM:614519]: A pathological condition characterized by bleeding into one or both cerebral hemispheres including the basal ganglia and the cerebral cortex. It is often associated with hypertension and craniocerebral trauma. Intracerebral bleeding is a common cause of stroke. Note=Disease susceptibility is associated with variations affecting the gene represented in this entry.

**序列相似性** Belongs to the peptidase M2 family.

**翻译后修饰** Phosphorylated by CK2 on Ser-1299; which allows membrane retention.

**细胞定位** Secreted and Cell membrane.

## 图片



Western blot - Angiotensin Converting Enzyme 1 antibody [EPR2757] (ab75762)

**All lanes :** Anti-Angiotensin Converting Enzyme 1 antibody [EPR2757] (ab75762) at 1/1000 dilution

**Lane 1 :** fetal kidney lysate

**Lane 2 :** fetal heart lysate

**Lane 3 :** fetal lung lysate

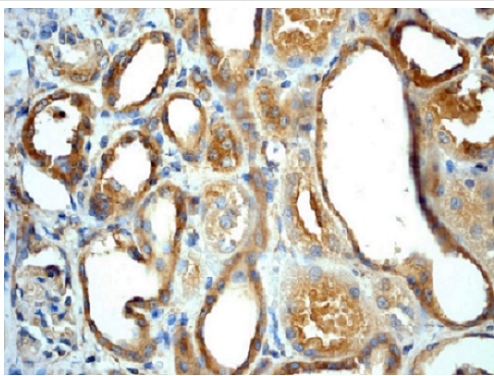
Lysates/proteins at 10 µg per lane.

**Secondary**

goat anti-rabbit HRP at 1/2000 dilution

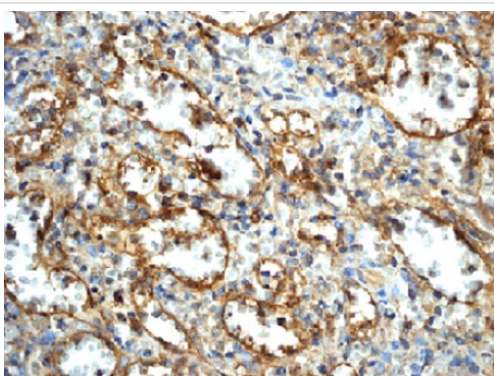
**Predicted band size :** 150 kDa

**Observed band size :** 195 kDa



Immunohistochemistry (Formalin/PFA-fixed paraffin-embedded sections) - Anti-Angiotensin Converting Enzyme 1 antibody [EPR2757] (ab75762)

ab75762 at 1/100 dilution staining Angiotensin Converting Enzyme 1 in human kidney by Immunohistochemistry, Paraffin-embedded tissue.



Immunohistochemistry (Formalin/PFA-fixed paraffin-embedded sections) - Anti-Angiotensin Converting Enzyme 1 antibody [EPR2757] (ab75762)

ab75762 at 1/100 dilution staining Angiotensin Converting Enzyme 1 in human spleen by Immunohistochemistry, Paraffin-embedded tissue. Note positive staining of endothelial cells.

### **Our Abpromise to you: Quality guaranteed and expert technical support**

---

- Replacement or refund for products not performing as stated on the datasheet
- Valid for 12 months from date of delivery
- Response to your inquiry within 24 hours
  
- We provide support in Chinese, English, French, German, Japanese and Spanish
- Extensive multi-media technical resources to help you
- We investigate all quality concerns to ensure our products perform to the highest standards

If the product does not perform as described on this datasheet, we will offer a refund or replacement. For full details of the Abpromise, please visit <http://www.abcam.cn/abpromise> or contact our technical team.

### **Terms and conditions**

---

- Guarantee only valid for products bought direct from Abcam or one of our authorized distributors