

Product datasheet

Anti-Angiogenin antibody ab125231

1 Abreviews 1 References 2 图像

概述

产品名称	Anti-Angiogenin抗体
描述	兔多克隆抗体to Angiogenin
宿主	Rabbit
经测试应用	适用于: WB, IHC-P
种属反应性	与反应: Human
免疫原	Synthetic peptide, corresponding to N terminal amino acids of Human Angiogenin
阳性对照	MCF-7, HeLa and SW620 Cell Lysate

性能

形式	Liquid
存放说明	Shipped at 4°C. Store at +4°C short term (1-2 weeks). Upon delivery aliquot. Store at -20°C long term.
存储溶液	Preservatives: 0.025% Thimerosal (merthiolate), 0.025% Sodium azide Constituents: 0.1% Dibasic monohydrogen sodium phosphate, 0.45% Sodium chloride, 2.5% BSA
纯度	Immunogen affinity purified
克隆	多克隆
同种型	IgG

应用

Our [Abpromise guarantee](#) covers the use of **ab125231** in the following tested applications.

The application notes include recommended starting dilutions; optimal dilutions/concentrations should be determined by the end user.

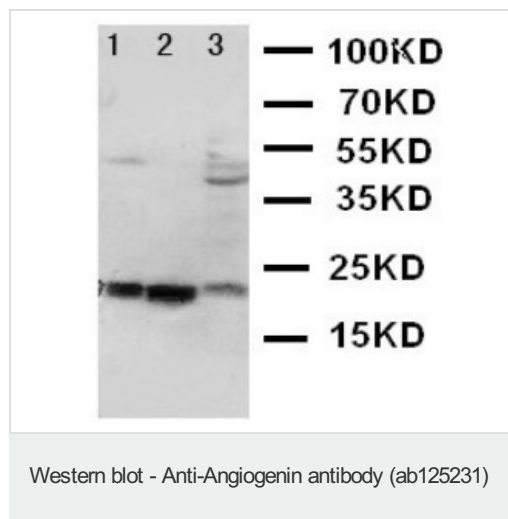
应用	Ab评论	说明
WB		Use a concentration of 1 µg/ml. Predicted molecular weight: 17 kDa.

应用	Ab评论	说明
IHC-P		Use a concentration of 1 µg/ml. Perform heat mediated antigen retrieval before commencing with IHC staining protocol.

靶标

功能	May function as a tRNA-specific ribonuclease that abolishes protein synthesis by specifically hydrolyzing cellular tRNAs. Binds to actin on the surface of endothelial cells; once bound, angiogenin is endocytosed and translocated to the nucleus. Angiogenin induces vascularization of normal and malignant tissues. Angiogenic activity is regulated by interaction with RNH1 in vivo.
组织特异性	Expressed predominantly in the liver. Also detected in endothelial cells and spinal cord neurons.
疾病相关	Defects in ANG are the cause of susceptibility to amyotrophic lateral sclerosis type 9 (ALS9) [MIM:611895]. ALS is a degenerative disorder of motor neurons in the cortex, brain stem and spinal cord. ALS is characterized by muscular weakness and atrophy.
序列相似性	Belongs to the pancreatic ribonuclease family.
发展阶段	Low level expression in the developing fetus, increased in the neonate, and maximal in the adult.
细胞定位	Secreted.

图片



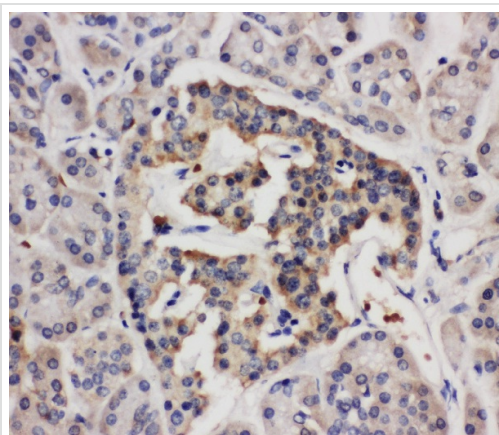
All lanes : Anti-Angiogenin antibody (ab125231) at 1 µg/ml

Lane 1 : MCF7 lysate

Lane 2 : HeLa lysate

Lane 3 : SW620 lysate

Predicted band size: 17 kDa



ab125231 staining human pancreas cancer tissue using Immunohistochemistry- Formalin/PFA-fixed paraffin-embedded sections.

Immunohistochemistry (Formalin/PFA-fixed paraffin-embedded sections) - Anti-Angiogenin antibody (ab125231)

Please note: All products are "FOR RESEARCH USE ONLY AND ARE NOT INTENDED FOR DIAGNOSTIC OR THERAPEUTIC USE"

Our Abpromise to you: Quality guaranteed and expert technical support

- Replacement or refund for products not performing as stated on the datasheet
- Valid for 12 months from date of delivery
- Response to your inquiry within 24 hours
- We provide support in Chinese, English, French, German, Japanese and Spanish
- Extensive multi-media technical resources to help you
- We investigate all quality concerns to ensure our products perform to the highest standards

If the product does not perform as described on this datasheet, we will offer a refund or replacement. For full details of the Abpromise, please visit <http://www.abcam.cn/abpromise> or contact our technical team.

Terms and conditions

- Guarantee only valid for products bought direct from Abcam or one of our authorized distributors