

## Product datasheet

# Anti-Alpha 2 Antiplasmin antibody ab62770

★★★★★ 2 Abreviews 2 图像

### 概述

产品名称	Anti-Alpha 2 Antiplasmin抗体
描述	兔多克隆抗体to Alpha 2 Antiplasmin
宿主	Rabbit
经测试应用	适用于: WB, ELISA, ICC/IF
种属反应性	与反应: Human
免疫原	Full length human alpha 2 antiplasmin.
阳性对照	This antibody gave a positive result when used in the following formaldehyde fixed cell lines: HepG2.

### 性能

形式	Liquid
存放说明	Shipped at 4°C. Upon delivery aliquot. Store at -80°C. Avoid freeze / thaw cycle.
存储溶液	Preservative: None Constituents: 0.1M Sodium chloride, 0.05M Sodium phosphate, 1mM EDTA, pH 6.6
纯度	Protein A purified
纯化说明	>98% pure (SDS-PAGE).
克隆	多克隆
同种型	IgG

### 应用

Our [Abpromise guarantee](#) covers the use of **ab62770** in the following tested applications.

The application notes include recommended starting dilutions; optimal dilutions/concentrations should be determined by the end user.

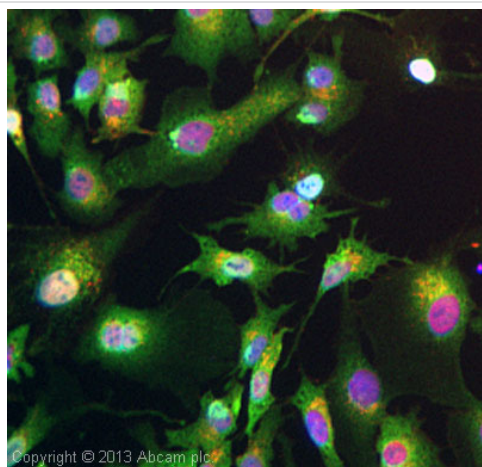
应用	Ab评论	说明
WB	★★★★☆	Use a concentration of 1 - 5 µg/ml. Predicted molecular weight: 55 kDa.
ELISA	★★★★★	1/10000.

应用	Ab评论	说明
ICC/IF		Use a concentration of 5 µg/ml.

## 靶标

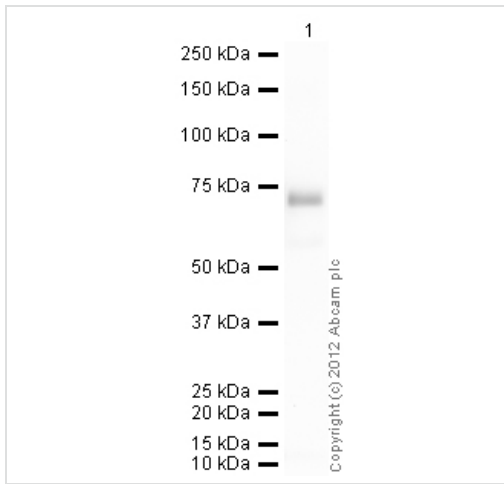
<b>功能</b>	Serine protease inhibitor. The major targets of this inhibitor are plasmin and trypsin, but it also inactivates matriptase-3/TMPRSS7 and chymotrypsin.
<b>组织特异性</b>	Expressed by the liver and secreted in plasma.
<b>疾病相关</b>	Defects in SERPINF2 are the cause of alpha-2-plasmin inhibitor deficiency (APLID) [MIM:262850]. APLID is an autosomal recessive disorder resulting in severe hemorrhagic diathesis.
<b>序列相似性</b>	Belongs to the serpin family.
<b>细胞定位</b>	Secreted.

## 图片



Immunocytochemistry/ Immunofluorescence - Anti-Alpha 2 Antiplasmin antibody (ab62770)

ICC/IF image of ab62770 stained HepG2 cells. The cells were 4% formaldehyde fixed (10 min) and then incubated in 1%BSA / 10% normal goat serum / 0.3M glycine in 0.1% PBS-Tween for 1h to permeabilise the cells and block non-specific protein-protein interactions. The cells were then incubated with the antibody ab62770 at 5 µg/mL overnight at +4°C. The secondary antibody (green) was DyLight® 488 Goat anti-Rabbit IgG (H+L) (ab96899) used at a 1/250 dilution for 1h. Alexa Fluor® 594 WGA was used to label plasma membranes (red) at a 1/200 dilution for 1h. DAPI was used to stain the cell nuclei (blue) at a concentration of 1.43µM.



Western blot - Anti-Alpha 2 Antiplasmin antibody  
(ab62770)

**Please note:** All products are "FOR RESEARCH USE ONLY AND ARE NOT INTENDED FOR DIAGNOSTIC OR THERAPEUTIC USE"

### Our Abpromise to you: Quality guaranteed and expert technical support

- Replacement or refund for products not performing as stated on the datasheet
- Valid for 12 months from date of delivery
- Response to your inquiry within 24 hours
- We provide support in Chinese, English, French, German, Japanese and Spanish
- Extensive multi-media technical resources to help you
- We investigate all quality concerns to ensure our products perform to the highest standards

If the product does not perform as described on this datasheet, we will offer a refund or replacement. For full details of the Abpromise, please visit <http://www.abcam.cn/abpromise> or contact our technical team.

### Terms and conditions

- Guarantee only valid for products bought direct from Abcam or one of our authorized distributors