

Product datasheet

Anti-Activin A Receptor Type IC antibody ab65088

1 图像

概述

产品名称	Anti-Activin A Receptor Type IC抗体
描述	兔多克隆抗体to Activin A Receptor Type IC
宿主	Rabbit
经测试应用	适用于: WB
种属反应性	与反应: Human
免疫原	Synthetic peptide conjugated to KLH derived from within residues 100 - 200 of Human Activin A Receptor Type IC.参阅Abcam的专有抗源政策(Peptide available as ab74349 .)
阳性对照	This antibody gave a positive signal in Human spleen tissue lysate. It also gave positive results in Human lung, ovary, placenta, heart, testis and kidney (data not shown).

性能

形式	Liquid
存放说明	Shipped at 4°C. Store at +4°C short term (1-2 weeks). Upon delivery aliquot. Store at -20°C or -80°C. Avoid freeze / thaw cycle.
存储溶液	Preservative: 0.02% Sodium Azide Constituents: 1% BSA, PBS, pH 7.4
纯度	Immunogen affinity purified
克隆	多克隆
同种型	IgG

应用

Our [Abpromise guarantee](#) covers the use of **ab65088** in the following tested applications.

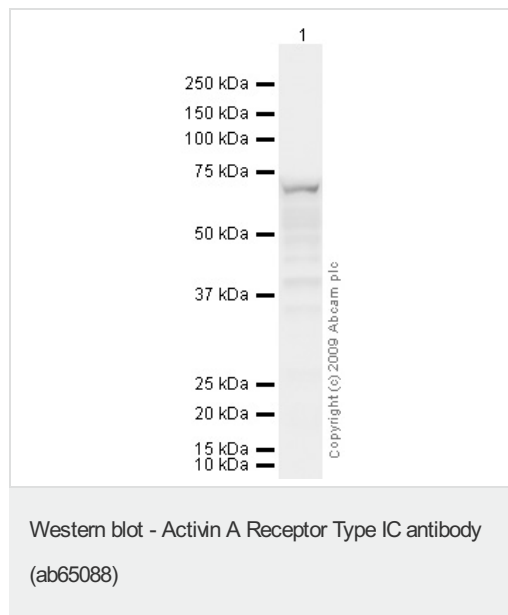
The application notes include recommended starting dilutions; optimal dilutions/concentrations should be determined by the end user.

应用	Ab评论	说明
WB		Use a concentration of 2 µg/ml. Detects a band of approximately 70 kDa (predicted molecular weight: 55 kDa).

靶标

功能	Serine/threonine protein kinase which forms a receptor complex on ligand binding. The receptor complex consisting of 2 type II and 2 type I transmembrane serine/threonine kinases. Type II receptors phosphorylate and activate type I receptors which autophosphorylate, then bind and activate SMAD transcriptional regulators, SMAD2 and SMAD3. Receptor for activin AB, activin B and NODAL. Plays a role in cell differentiation, growth arrest and apoptosis.
组织特异性	Present in pancreas, heart, colon, small intestine, ovary and the hippocampus, medulla oblongata and putamen of the brain. Isoform 1, isoform 2, isoform 3 and isoform 4 are all expressed in the placenta throughout pregnancy.
序列相似性	Belongs to the protein kinase superfamily. TKL Ser/Thr protein kinase family. TGFB receptor subfamily. Contains 1 GS domain. Contains 1 protein kinase domain.
细胞定位	Membrane.

图片



Anti-Activin A Receptor Type IC antibody (ab65088) at 2 µg/ml + Human spleen tissue lysate - total protein (ab29699) at 20 µg

Secondary

Goat polyclonal to Rabbit IgG - H&L - Pre-Adsorbed (HRP) at 1/3000 dilution

Performed under reducing conditions.

Predicted band size: 55 kDa

Observed band size: 70 kDa

Exposure time: 30 seconds

The 70 kDa band observed is comparable to the molecular weight seen with other commercially available antibodies to Activin A Receptor Type IC.

Please note: All products are "FOR RESEARCH USE ONLY AND ARE NOT INTENDED FOR DIAGNOSTIC OR THERAPEUTIC USE"

Our Abpromise to you: Quality guaranteed and expert technical support

- Replacement or refund for products not performing as stated on the datasheet

- Valid for 12 months from date of delivery
- Response to your inquiry within 24 hours

- We provide support in Chinese, English, French, German, Japanese and Spanish
- Extensive multi-media technical resources to help you
- We investigate all quality concerns to ensure our products perform to the highest standards

If the product does not perform as described on this datasheet, we will offer a refund or replacement. For full details of the Abpromise, please visit <http://www.abcam.cn/abpromise> or contact our technical team.

Terms and conditions

- Guarantee only valid for products bought direct from Abcam or one of our authorized distributors