

Product datasheet

Anti-Activin A Receptor Type IB antibody ab77049

1 References 1 图像

概述

产品名称	Anti-Activin A Receptor Type IB抗体
描述	兔多克隆抗体 to Activin A Receptor Type IB
宿主	Rabbit
特异性	At least three isoforms of ACVR1B are known to exist. This antibody is predicted to have no cross-reactivity to ACVR1 or ACVR1C.
经测试应用	适用于: WB
种属反应性	与反应: Mouse, Human
免疫原	Synthetic peptide corresponding to Human Activin A Receptor Type IB (C terminal). ACVR1B antibody was raised against a 14 amino acid synthetic peptide near the carboxy terminus of the human ACVR1B. Database link: P36896
阳性对照	Human kidney tissue lysate
常规说明	Antibodies should not be exposed to prolonged high temperatures.

性能

形式	Liquid
存放说明	Shipped at 4°C. Store at +4°C short term (1-2 weeks). Upon delivery aliquot. Store at -20°C. Avoid freeze / thaw cycle. Please see notes section.
存储溶液	Preservative: 0.02% Sodium azide Constituent: 99.98% PBS
纯度	Immunogen affinity purified
克隆	多克隆
同种型	IgG

应用

Our [Abpromise guarantee](#) covers the use of **ab77049** in the following tested applications.

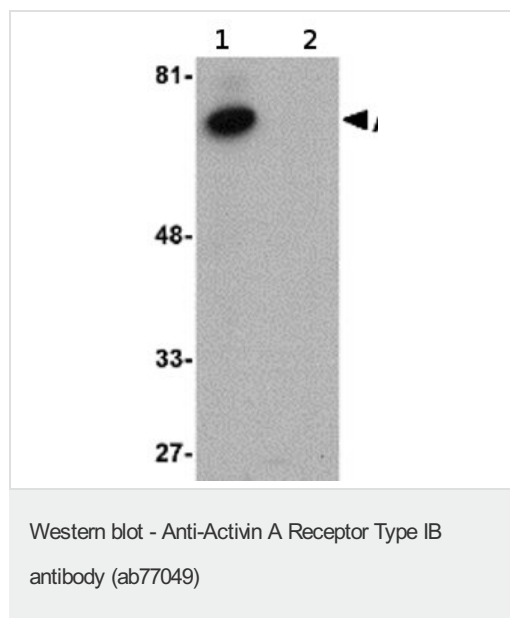
The application notes include recommended starting dilutions; optimal dilutions/concentrations should be determined by the end user.

应用	Ab评论	说明
WB		Use a concentration of 1 µg/ml. Predicted molecular weight: 57 kDa.

靶标

功能	On ligand binding, forms a receptor complex consisting of two type II and two type I transmembrane serine/threonine kinases. Type II receptors phosphorylate and activate type I receptors which autophosphorylate, then bind and activate SMAD transcriptional regulators. Phosphorylates TDP2.
组织特异性	Expressed in many tissues, most strongly in kidney, pancreas, brain, lung, and liver.
序列相似性	Belongs to the protein kinase superfamily. TKL Ser/Thr protein kinase family. TGFB receptor subfamily. Contains 1 GS domain. Contains 1 protein kinase domain.
翻译后修饰	Autophosphorylated.
细胞定位	Membrane.
形式	There are 3 isoforms produced by alternative splicing. Isoform 1 also known as SKR2-1; isoform 2 as SKR2-2; isoform 3 as SKR2-3.

图片



All lanes : Anti-Activin A Receptor Type IB antibody (ab77049) at 1 µg/ml

Lane 1 : human kidney tissue lysate

Lane 2 : human kidney tissue lysate with blocking peptide

Lysates/proteins at 15 µg per lane.

Predicted band size: 57 kDa

Observed band size: 66 kDa

Please note: All products are "FOR RESEARCH USE ONLY AND ARE NOT INTENDED FOR DIAGNOSTIC OR THERAPEUTIC USE"

Our Abpromise to you: Quality guaranteed and expert technical support

- Replacement or refund for products not performing as stated on the datasheet
- Valid for 12 months from date of delivery

- Response to your inquiry within 24 hours
- We provide support in Chinese, English, French, German, Japanese and Spanish
- Extensive multi-media technical resources to help you
- We investigate all quality concerns to ensure our products perform to the highest standards

If the product does not perform as described on this datasheet, we will offer a refund or replacement. For full details of the Abpromise, please visit <http://www.abcam.cn/abpromise> or contact our technical team.

Terms and conditions

- Guarantee only valid for products bought direct from Abcam or one of our authorized distributors