

Product datasheet

Anti-Actin antibody [AC-40] ab11003

★★★★★ 4 Abreviews 26 References 3 图像

概述

产品名称	Anti-Actin抗体[AC-40]
描述	小鼠单克隆抗体[AC-40] to Actin
宿主	Mouse
经测试应用	适用于: Dot blot, WB, ELISA, IHC-FoFr, IHC-P, IHC-Fr, ICC/IF
种属反应性	与反应: Mouse, Rat, Sheep, Rabbit, Goat, Chicken, Guinea pig, Hamster, Cow, Dog, Human, Pig, Xenopus laevis, Carp, Snail
免疫原	Synthetic peptide within Human Actin aa 365-375 (C terminal). The exact sequence is proprietary. Sequence: SGPSIVHRKCF Run BLAST with Run BLAST with
表位	Monoclonal anti-Actin recognizes an epitope located on the C-terminal end of actin. This epitope is conserved in all actin isoforms.
常规说明	Storage in frost-free freezers is not recommended. If slight turbidity occurs upon prolonged storage, clarify the solution by centrifugation before use. Abcam is committed to meeting high standards of ethical manufacturing and has decided to discontinue this product by June 2019 as it has been generated by the ascites method. We are sorry for any inconvenience this may cause. We would recommend antibody ab219733 as a replacement. We are constantly working hard to ensure we provide our customers with best in class antibodies. As a result of this work we are pleased to now offer this antibody in purified format. We are in the process of updating our datasheets. The purified format is designated 'PUR' on our product labels. If you have any questions regarding this update, please contact our Scientific Support team.

性能

形式	Liquid
存放说明	Shipped at 4°C. Store at +4°C short term (1-2 weeks). Upon delivery aliquot. Store at -20°C. Avoid freeze / thaw cycle.
存储溶液	pH: 7.4 Preservative: 0.097% Sodium azide

纯度	Constituent: PBS
纯化说明	Proprietary Purification
克隆	Purified from Ascites
克隆编号	单克隆
同种型	AC-40
	IgG2a

应用

Our [Abpromise guarantee](#) covers the use of **ab11003** in the following tested applications.

The application notes include recommended starting dilutions; optimal dilutions/concentrations should be determined by the end user.

应用	Ab评论	说明
Dot blot		Use at an assay dependent concentration. Use at an assay dependent concentration
WB	★★★★★	Use at an assay dependent concentration. Predicted molecular weight: 42 kDa. 1/500 using cultured Human or chicken fibroblast extract. Predicted molecular weight: 42 kDa.
ELISA	★★★★☆	Use at an assay dependent concentration.
IHC-FoFr		Use at an assay dependent concentration.
IHC-P		Use at an assay dependent concentration.
IHC-Fr		Use at an assay dependent concentration.
ICC/IF	★★★★☆	Use at an assay dependent concentration. 1/200 determined by indirect immunofluorescent staining of cultured Human or chicken fibroblasts.

靶标

功能	Actins are highly conserved proteins that are involved in various types of cell motility and are ubiquitously expressed in all eukaryotic cells.
疾病相关	<p>Defects in ACTA1 are the cause of nemaline myopathy type 3 (NEM3) [MIM:161800]. A form of nemaline myopathy. Nemaline myopathies are muscular disorders characterized by muscle weakness of varying severity and onset, and abnormal thread-or rod-like structures in muscle fibers on histologic examination. The phenotype at histological level is variable. Some patients present areas devoid of oxidative activity containing (cores) within myofibers. Core lesions are unstructured and poorly circumscribed.</p> <p>Defects in ACTA1 are a cause of myopathy congenital with excess of thin myofilaments (MPCETM) [MIM:161800]. A congenital muscular disorder characterized at histological level by areas of sarcoplasm devoid of normal myofibrils and mitochondria, and replaced with dense masses of thin filaments. Central cores, rods, ragged red fibers, and necrosis are absent.</p> <p>Defects in ACTA1 are a cause of congenital myopathy with fiber-type disproportion (CFTD) [MIM:255310]; also known as congenital fiber-type disproportion myopathy (CFTDM). CFTD is a</p>

genetically heterogeneous disorder in which there is relative hypotrophy of type 1 muscle fibers compared to type 2 fibers on skeletal muscle biopsy. However, these findings are not specific and can be found in many different myopathic and neuropathic conditions.

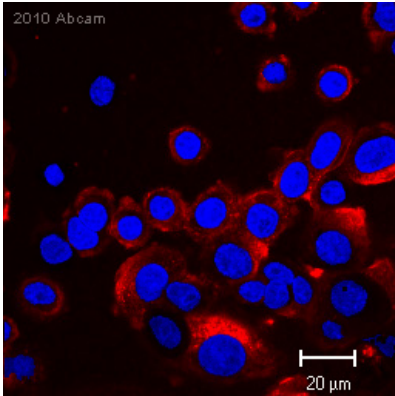
序列相似性

Belongs to the actin family.

细胞定位

Cytoplasm > cytoskeleton.

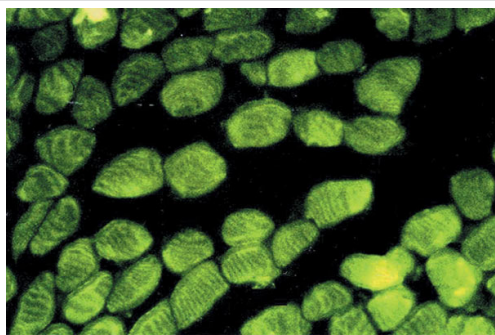
图片



[ab11003](#) staining Actin in Human SW480 cells by Immunocytochemistry/ Immunofluorescence. The cells were formaldehyde fixed and then blocked using 10% serum for 1 hour at 25°C. Samples were then incubated with primary antibody at 1/50 for 2 hours at 25°C. The secondary antibody used was a goat anti-mouse IgG conjugated to Alexa Fluor® 568 (red) used at a 1/100 dilution.

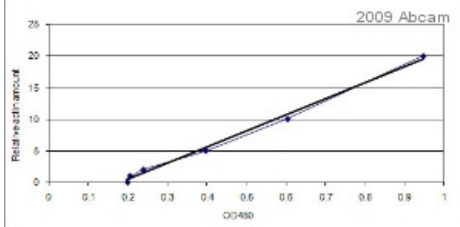
Immunocytochemistry/ Immunofluorescence - Anti-Actin antibody [AC-40] (ab11003)

This image is courtesy of an anonymous Abreview



Immunohistochemical analysis of frozen Human tongue tissue, using [ab11003](#).

Immunohistochemistry (Frozen sections) - Anti-Actin antibody [AC-40] (ab11003)



ELISA - Anti-Actin antibody [AC-40] (ab11003)

This image is courtesy of an anonymous Abreview

ab11003 staining Human fibroblast cells by ELISA (Sandwich-capture). Cells were blocked in 1% BSA for 1 hour at 25°C. The primary antibody ab11003 (Capture antibody) was diluted 1/3000 and incubated with sample for 12 hours at 4°C. **ab5694** was used as secondary and a HRP conjugated goat polyclonal to mouse, diluted 1/1000 was used as detection antibody.

Please note: All products are "FOR RESEARCH USE ONLY AND ARE NOT INTENDED FOR DIAGNOSTIC OR THERAPEUTIC USE"

Our Abpromise to you: Quality guaranteed and expert technical support

- Replacement or refund for products not performing as stated on the datasheet
- Valid for 12 months from date of delivery
- Response to your inquiry within 24 hours
- We provide support in Chinese, English, French, German, Japanese and Spanish
- Extensive multi-media technical resources to help you
- We investigate all quality concerns to ensure our products perform to the highest standards

If the product does not perform as described on this datasheet, we will offer a refund or replacement. For full details of the Abpromise, please visit <http://www.abcam.cn/abpromise> or contact our technical team.

Terms and conditions

- Guarantee only valid for products bought direct from Abcam or one of our authorized distributors