

Product datasheet

Anti-ARHGAP21 antibody ab122350

1 图像

概述

| | |
|-------|---|
| 产品名称 | Anti-ARHGAP21抗体 |
| 描述 | 兔多克隆抗体to ARHGAP21 |
| 宿主 | Rabbit |
| 经测试应用 | 适用于: IHC-P |
| 种属反应性 | 与反应: Human |
| 免疫原 | antigen sequence: VPPCLTTSAP LIRRQLSHDH ESGPPSLDA QPNSKTERSK SYDEGLDDYR EDAKLSFKHV SSLKGIKIAD SQKSSSEDSGS RKDSSSEVFS DAAKEG, corresponding to amino acids 840-935 of Human ARHGAP21. Run BLAST with ExPASy Run BLAST with NCBI |
| 阳性对照 | Human gall bladder tissue. |

性能

| | |
|------|---|
| 形式 | Liquid |
| 存放说明 | Shipped at 4°C. Upon delivery aliquot and store at -20°C. Avoid freeze / thaw cycles. |
| 存储溶液 | pH: 7.20 Preservative: 0.02% Sodium azide Constituents: 59% PBS, 40% Glycerol |
| 纯度 | Immunogen affinity purified |
| 克隆 | 多克隆 |
| 同种型 | IgG |

应用

Our [Abpromise guarantee](#) covers the use of **ab122350** in the following tested applications.

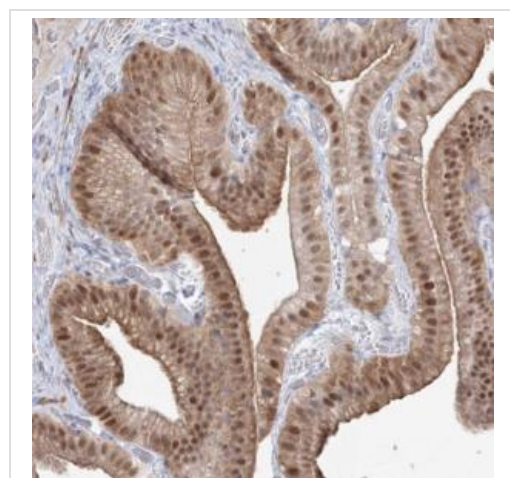
The application notes include recommended starting dilutions; optimal dilutions/concentrations should be determined by the end user.

| 应用 | Ab评论 | 说明 |
|-------|------|---|
| IHC-P | | 1/200 - 1/500. Perform heat mediated antigen retrieval with citrate buffer pH 6 before commencing with IHC staining protocol. |

靶标

| | |
|-------|---|
| 功能 | Functions as a GTPase-activating protein (GAP) for RHOA and CDC42. Downstream partner of ARF1 which may control Golgi apparatus structure and function. Also required for CTNNA1 recruitment to adherens junctions. |
| 组织特异性 | Widely expressed with higher expression in brain, heart, skeletal muscle and placenta. |
| 序列相似性 | Contains 1 PDZ (DHR) domain. Contains 1 PH domain. Contains 1 Rho-GAP domain. |
| 细胞定位 | Golgi apparatus membrane. Cell junction. Cytoplasmic vesicle membrane. Cytoplasm > cytoskeleton. Localization to the Golgi is dependent on interaction with GTP-bound ARF1. |

图片



ab122350, at 1/200 dilution, staining ARHGAP21 in paraffin-embedded Human gall bladder tissue by Immunohistochemistry.

Immunohistochemistry (Formalin/PFA-fixed paraffin-embedded sections) - Anti-ARHGAP21 antibody (ab122350)

Please note: All products are "FOR RESEARCH USE ONLY AND ARE NOT INTENDED FOR DIAGNOSTIC OR THERAPEUTIC USE"

Our Abpromise to you: Quality guaranteed and expert technical support

- Replacement or refund for products not performing as stated on the datasheet
- Valid for 12 months from date of delivery
- Response to your inquiry within 24 hours

- We provide support in Chinese, English, French, German, Japanese and Spanish
- Extensive multi-media technical resources to help you
- We investigate all quality concerns to ensure our products perform to the highest standards

If the product does not perform as described on this datasheet, we will offer a refund or replacement. For full details of the Abpromise, please visit <http://www.abcam.cn/abpromise> or contact our technical team.

Terms and conditions

- Guarantee only valid for products bought direct from Abcam or one of our authorized distributors