

Product datasheet

Anti-APPL antibody ab95195

★★★★★ 1 Abreviews 1 References 2 图像

概述

产品名称	Anti-APPL抗体
描述	兔多克隆抗体to APPL
宿主	Rabbit
经测试应用	适用于: WB, IP, ELISA, ICC/IF
种属反应性	与反应: Mouse, Rat, Hamster, Human, Monkey
免疫原	Recombinant full length protein (Human) expressed in E.coli
阳性对照	HEK293 cell lysate C ₂ C ₁₂ cells

性能

形式	Liquid
存放说明	Shipped at 4°C. Upon delivery aliquot. Avoid freeze / thaw cycle.
存储溶液	Preservative: None Constituents: 100µg/ml BSA, 150mM Sodium chloride, 10mM Sodium HEPES, pH 7.5
纯度	Immunogen affinity purified
克隆	多克隆
同种型	IgG

应用

Our [Abpromise guarantee](#) covers the use of **ab95195** in the following tested applications.

The application notes include recommended starting dilutions; optimal dilutions/concentrations should be determined by the end user.

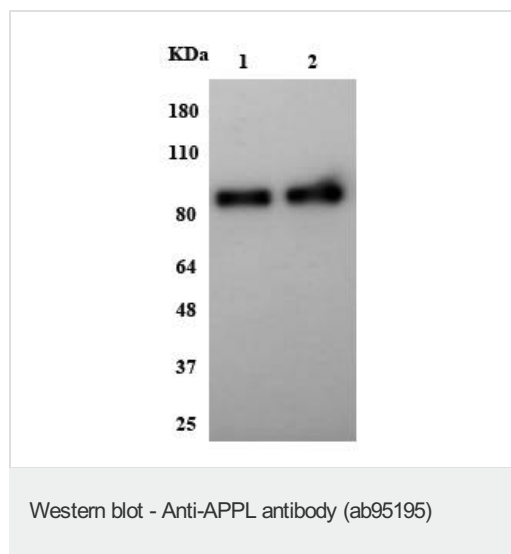
应用	Ab评论	说明
WB	★★★★★	Use a concentration of 0.1 - 0.2 µg/ml. Detects a band of approximately 85 kDa (predicted molecular weight: 80 kDa).
IP		Use at an assay dependent dilution.
ELISA		Use a concentration of 0.5 - 1 µg/ml.

应用	Ab评论	说明
ICC/IF		Use a concentration of 1 - 2 µg/ml.

靶标

功能	Required for the regulation of cell proliferation in response to extracellular signals from an early endosomal compartment. Links Rab5 to nuclear signal transduction.
组织特异性	High levels in heart, ovary, pancreas and skeletal muscle.
序列相似性	Contains 1 PH domain. Contains 1 PID domain.
结构域	Overexpression of an N-terminal domain (residues 1-319) or a C-terminal region (residues 273-709) has a proapoptotic effect.
翻译后修饰	Phosphorylated upon DNA damage, probably by ATM or ATR.
细胞定位	Early endosome membrane. Nucleus. Early endosomal membrane-bound and nuclear. Translocated into the nucleus upon release from endosomal membranes following internalization of EGF.

图片



All lanes : Anti-APPL antibody (ab95195) at 0.2 µg/ml

Lane 1 : HEK293 cell lysate

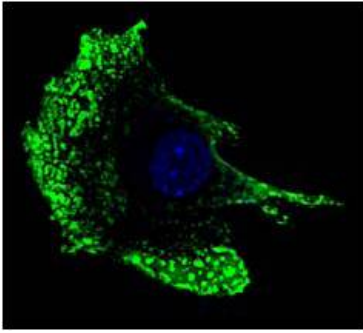
Lane 2 : C₂C₁₂ cell lysate

Lysates/proteins at 20 µg per lane.

Secondary

All lanes : Goat anti-rabbit antibody

Predicted band size: 80 kDa



Immunostaining of APPL in C₂C₁₂ cells using ab95195 at 2 µg/ml followed by goat anti rabbit antibody, visualized by confocal microscopy.

Immunocytochemistry/ Immunofluorescence - Anti-APPL antibody (ab95195)

Please note: All products are "FOR RESEARCH USE ONLY AND ARE NOT INTENDED FOR DIAGNOSTIC OR THERAPEUTIC USE"

Our Abpromise to you: Quality guaranteed and expert technical support

- Replacement or refund for products not performing as stated on the datasheet
- Valid for 12 months from date of delivery
- Response to your inquiry within 24 hours
- We provide support in Chinese, English, French, German, Japanese and Spanish
- Extensive multi-media technical resources to help you
- We investigate all quality concerns to ensure our products perform to the highest standards

If the product does not perform as described on this datasheet, we will offer a refund or replacement. For full details of the Abpromise, please visit <http://www.abcam.cn/abpromise> or contact our technical team.

Terms and conditions

- Guarantee only valid for products bought direct from Abcam or one of our authorized distributors