

Product datasheet

Anti-AMH antibody ab103233

1 Abreviews 2 References 3 图像

概述

产品名称	Anti-AMH抗体
描述	兔多克隆抗体to AMH
宿主	Rabbit
经测试应用	适用于: WB, IHC-P
种属反应性	与反应: Mouse, Human
免疫原	Synthetic peptide conjugated to KLH, corresponding to a region within internal sequence amino acids 430-460 of Human AMH
阳性对照	293 cell lysate; Mouse liver tissue lysate; Prostate carcinoma

性能

形式	Liquid
存放说明	Shipped at 4°C. Store at +4°C short term (1-2 weeks). Upon delivery aliquot. Store at -20°C long term.
存储溶液	Preservative: 0.09% Sodium Azide Constituents: PBS
纯度	Immunogen affinity purified
纯化说明	ab103233 is purified through a protein A column, followed by peptide affinity purification.
克隆	多克隆
同种型	IgG

应用

Our [Abpromise guarantee](#) covers the use of **ab103233** in the following tested applications.

The application notes include recommended starting dilutions; optimal dilutions/concentrations should be determined by the end user.

应用	Ab评论	说明
WB		1/100 - 1/500. Predicted molecular weight: 60 kDa.

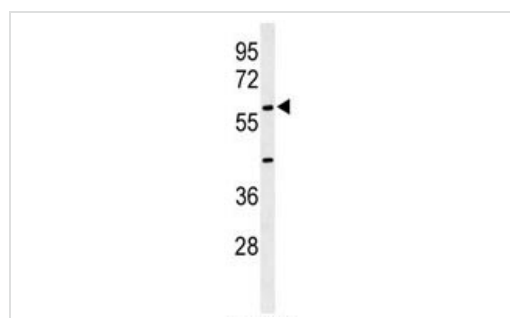
应用	Ab评论	说明
IHC-P		1/50 - 1/100. Perform heat mediated antigen retrieval with citrate buffer pH 6 before commencing with IHC staining protocol.

靶标

相关性 Anti mullerian hormone (AMH) is a member of the TGF beta superfamily. It is secreted as a homodimeric 140kD disulphide linked precursor that is cleaved to release the mature 30kD homodimer. Originally classified as a foetal testicular hormone that inhibits Mullerian duct development, AMH is expressed post natively by immature Sertoli cells, and to a lesser degree by granulosa cells. AMH plays a role in testicular differentiation and in the regulation of ovarian follicle growth.

细胞定位 Secreted

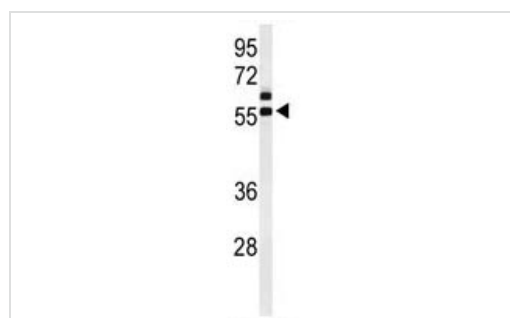
图片



Anti-AMH antibody (ab103233) at 1/100 dilution + 293 cell lysate at 35 µg

Predicted band size: 60 kDa

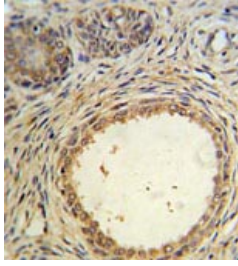
Western blot - Anti-AMH antibody (ab103233)



Anti-AMH antibody (ab103233) at 1/100 dilution + Mouse liver tissue lysate at 35 µg

Predicted band size: 60 kDa

Western blot - Anti-AMH antibody (ab103233)



ab103233, at 1/50 dilution, staining AMH in formalin-fixed, paraffin-embedded prostate carcinoma by Immunohistochemistry using a peroxidase conjugated secondary antibody and DAB staining.

Immunohistochemistry (Formalin/PFA-fixed paraffin-embedded sections) - Anti-AMH antibody (ab103233)

Please note: All products are "FOR RESEARCH USE ONLY AND ARE NOT INTENDED FOR DIAGNOSTIC OR THERAPEUTIC USE"

Our Abpromise to you: Quality guaranteed and expert technical support

- Replacement or refund for products not performing as stated on the datasheet
- Valid for 12 months from date of delivery
- Response to your inquiry within 24 hours
- We provide support in Chinese, English, French, German, Japanese and Spanish
- Extensive multi-media technical resources to help you
- We investigate all quality concerns to ensure our products perform to the highest standards

If the product does not perform as described on this datasheet, we will offer a refund or replacement. For full details of the Abpromise, please visit <http://www.abcam.cn/abpromise> or contact our technical team.

Terms and conditions

- Guarantee only valid for products bought direct from Abcam or one of our authorized distributors