

Product datasheet

Anti-ALDH1A1 antibody [5A11] ab105920

3 References 4 图像

概述

产品名称	Anti-ALDH1A1抗体[5A11]
描述	小鼠单克隆抗体[5A11] to ALDH1A1
宿主	Mouse
经测试应用	适用于: WB, IHC-P, ELISA, Flow Cyt
种属反应性	与反应: Human
免疫原	Purified recombinant fragment of Human ALDH1A1 expressed in E. coli.
阳性对照	WB: Raji, Jurkat, THP1 and K562 cell lysates IHC-P: Human cerebellum and lung cancer tissues
常规说明	This product was changed from ascites to supernatant. Lot no's high than GR120645-17 are from Tissue Culture Supernatant

性能

形式	Liquid
存放说明	Shipped at 4°C. Store at +4°C short term (1-2 weeks). Store at -20°C long term.
存储溶液	Preservative: 0.05% Sodium azide Constituent: PBS
纯度	Protein G purified
纯化说明	Purified from tissue culture supernatant.
克隆	单克隆
克隆编号	5A11
同种型	IgG1

应用

Our [Abpromise guarantee](#) covers the use of **ab105920** in the following tested applications.

The application notes include recommended starting dilutions; optimal dilutions/concentrations should be determined by the end user.

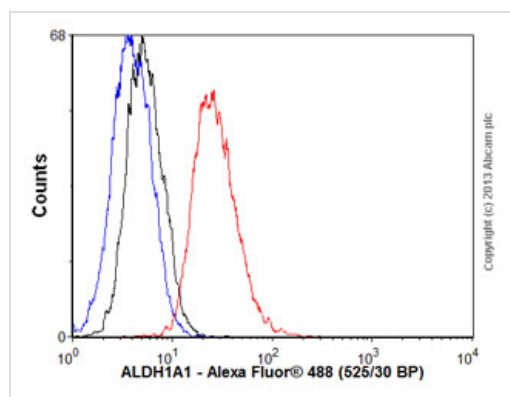
应用	Ab评论	说明
WB		1/200 - 1/1000. Predicted molecular weight: 55 kDa.

应用	Ab评论	说明
IHC-P		1/200 - 1/1000.
ELISA		1/10000.
Flow Cyt		1/100. ab170190 - Mouse monoclonal IgG1, is suitable for use as an isotype control with this antibody.

靶标

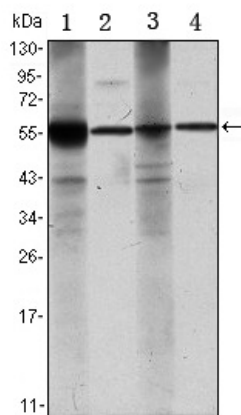
功能	Binds free retinal and cellular retinol-binding protein-bound retinal. Can convert/oxidize retinaldehyde to retinoic acid.
通路	Cofactor metabolism; retinol metabolism.
序列相似性	Belongs to the aldehyde dehydrogenase family.
细胞定位	Cytoplasm.

图片



Flow Cytometry - Anti-ALDH1A1 antibody [5A11]
(ab105920)

Overlay histogram showing HepG2 cells stained with ab105920 (red line). The cells were fixed with 4% paraformaldehyde (10 min) and then permeabilized with 0.1% PBS-Tween for 20 min. The cells were then incubated in 1x PBS / 10% normal goat serum / 0.3M glycine to block non-specific protein-protein interactions followed by the antibody (ab105920, 1/100 dilution) for 30 min at 22°C. The secondary antibody used was Alexa Fluor® 488 goat anti-mouse IgG (H+L) ([ab150113](#)) at 1/2000 dilution for 30 min at 22°C. Isotype control antibody (black line) was mouse IgG1 [ICIGG1] ([ab91353](#), 1µg/1x10⁶ cells) used under the same conditions. Unlabelled sample (blue line) was also used as a control. Acquisition of >5,000 events were collected using a 20mW Argon ion laser (488nm) and 525/30 bandpass filter. This antibody gave a positive signal in HepG2 cells fixed with 80% methanol (5 min)/permeabilized with 0.1% PBS-Tween for 20 min used under the same conditions.



Western blot - Anti-ALDH1A1 antibody [5A11]
(ab105920)

All lanes : Anti-ALDH1A1 antibody [5A11]
(ab105920) at 1/200 dilution

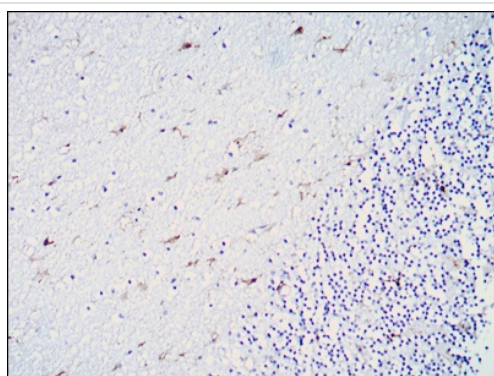
Lane 1 : Raji cell lysate

Lane 2 : Jurkat cell lysate

Lane 3 : THP1 cell lysate

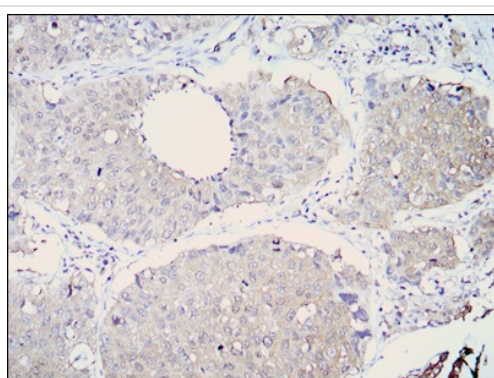
Lane 4 : K562 cell lysate

Predicted band size: 55 kDa



Immunohistochemistry (Formalin/PFA-fixed paraffin-
embedded sections) - Anti-ALDH1A1 antibody
[5A11] (ab105920)

ab105920, at a 1/200 dilution, staining
ALDH1A1 in paraffin embedded Human
cerebellum tissue by Immunohistochemistry.



Immunohistochemistry (Formalin/PFA-fixed paraffin-
embedded sections) - Anti-ALDH1A1 antibody
[5A11] (ab105920)

ab105920, at a 1/200 dilution, staining
ALDH1A1 in paraffin embedded Human lung
cancer tissue by Immunohistochemistry.

Please note: All products are "FOR RESEARCH USE ONLY AND ARE NOT INTENDED FOR DIAGNOSTIC OR THERAPEUTIC USE"

Our Abpromise to you: Quality guaranteed and expert technical support

- Replacement or refund for products not performing as stated on the datasheet
- Valid for 12 months from date of delivery
- Response to your inquiry within 24 hours

- We provide support in Chinese, English, French, German, Japanese and Spanish
- Extensive multi-media technical resources to help you
- We investigate all quality concerns to ensure our products perform to the highest standards

If the product does not perform as described on this datasheet, we will offer a refund or replacement. For full details of the Abpromise, please visit <http://www.abcam.cn/abpromise> or contact our technical team.

Terms and conditions

- Guarantee only valid for products bought direct from Abcam or one of our authorized distributors