


Product datasheet

Anti-AHI1 antibody ab117794

2 图像

概述

|       |  |
|-------|--|
| 产品名称  | Anti-AHI1 抗体   |
| 描述    | 兔多克隆抗体 to AHI1   |
| 宿主    | Rabbit   |
| 经测试应用 | 适用于: WB, IP  |
| 种属反应性 | 与反应: Human<br>预测可用于: Gorilla  |
| 免疫原   | Synthetic peptide, corresponding to a region within amino acids 1146-1196 of Human AHI1 (NP_001128302.1).      |
| 阳性对照  | Jurkat, HeLa and 293T whole cell lysates.  |

性能

|      |  |
|------|--|
| 形式   | Liquid   |
| 存放说明 | Shipped at 4°C. Upon delivery aliquot and store at -20°C. Avoid freeze / thaw cycles.          |
| 存储溶液 | Preservative: 0.09% Sodium azide<br>Constituent: 99% Tris citrate/phosphate<br>Note: pH 7-8    |
| 纯度   | Immunogen affinity purified  |
| 纯化说明 | ab117794 was affinity purified using an epitope specific to AHI1 immobilized on solid support. |
| 克隆   | 多克隆  |
| 同种型  | IgG  |

应用

Our [Abpromise guarantee](#) covers the use of **ab117794** in the following tested applications.

The application notes include recommended starting dilutions; optimal dilutions/concentrations should be determined by the end user.

| 应用 | Ab评论 | 说明   |
|----|------|--|
| WB |      | 1/2000 - 1/10000. Predicted molecular weight: 137 kDa. |

| 应用 | Ab评论 | 说明                           |
|----|------|------------------------------|
| IP |      | Use at 2-10 µg/mg of lysate. |

## 靶标

### 组织特异性

Highly expressed in the most primitive normal hematopoietic cells. Expressed in brain, particularly in neurons that give rise to the crossing axons of the corticospinal tract and superior cerebellar peduncles. Expressed in kidney (renal collecting duct cells) (at protein level).

### 疾病相关

Defects in AHI1 are the cause of Joubert syndrome type 3 (JBTS3) [MIM:608629]. JBTS is an autosomal recessive disorder presenting with cerebellar ataxia, oculomotor apraxia, hypotonia, neonatal breathing abnormalities and psychomotor delay. Neuroradiologically, it is characterized by cerebellar vermian hypoplasia/aplasia, thickened and reoriented superior cerebellar peduncles, and an abnormally large interpeduncular fossa, giving the appearance of a molar tooth on transaxial slices (molar tooth sign). Additional variable features include retinal dystrophy and renal disease. JBTS3 shows minimal extra central nervous system involvement and appears not to be associated with renal dysfunction.

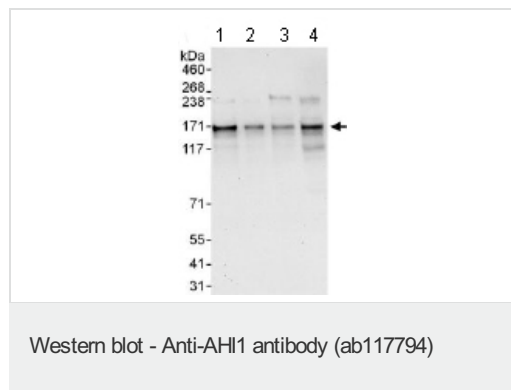
### 序列相似性

Contains 1 SH3 domain.  
Contains 7 WD repeats.

### 细胞定位

Cytoplasm > cytoskeleton > cilium basal body. Cell junction > adherens junction.

## 图片



**All lanes** : Anti-AHI1 antibody (ab117794) at 0.1 µg/ml

**Lane 1** : HeLa whole cell lysates at 50 µg

**Lane 2** : HeLa whole cell lysates at 15 µg

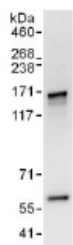
**Lane 3** : 293T whole cell lysates at 50 µg

**Lane 4** : Jurkat whole cell lysates at 50 µg

Developed using the ECL technique.

**Predicted band size:** 137 kDa

**Exposure time:** 30 seconds



Immunoprecipitation - Anti-AHI1 antibody (ab117794)

Detection of AHI1 by Western Blot of Immunoprecipitate.

ab117794 at 1 µg/ml staining AHI1 in HeLa whole cell lysate immunoprecipitated using ab117794 at 6 µg/mg lysate (1 mg/IP; 20% of IP loaded/lane).

Detection: Chemiluminescence with exposure time of 3 seconds.

**Please note:** All products are "FOR RESEARCH USE ONLY AND ARE NOT INTENDED FOR DIAGNOSTIC OR THERAPEUTIC USE"

### Our Abpromise to you: Quality guaranteed and expert technical support

- Replacement or refund for products not performing as stated on the datasheet
- Valid for 12 months from date of delivery
- Response to your inquiry within 24 hours
- We provide support in Chinese, English, French, German, Japanese and Spanish
- Extensive multi-media technical resources to help you
- We investigate all quality concerns to ensure our products perform to the highest standards

If the product does not perform as described on this datasheet, we will offer a refund or replacement. For full details of the Abpromise, please visit <http://www.abcam.cn/abpromise> or contact our technical team.

### Terms and conditions

- Guarantee only valid for products bought direct from Abcam or one of our authorized distributors