

Product datasheet

Anti-AHA1 antibody [25F2.D9] ab91259

4 图像

概述

产品名称	Anti-AHA1抗体[25F2.D9]
描述	大鼠单克隆抗体[25F2.D9] to AHA1
宿主	Rat
经测试应用	适用于: IHC-P, IHC-Fr, WB, IP, ELISA, ICC/IF
种属反应性	与反应: Mouse, Rat, Human
免疫原	Mouse AHA1
阳性对照	ICC/IF: HeLa cells. IHC-P: Mouse back skin. IP: HeLa cell lysate.

性能

形式	Liquid
存放说明	Shipped at 4°C. Upon delivery aliquot and store at -20°C. Avoid freeze / thaw cycles.
存储溶液	Preservative: None Constituents: 0.15M Sodium chloride, 0.02M Potassium phosphate, pH 7.2
纯度	Protein G purified
克隆	单克隆
克隆编号	25F2.D9
同种型	IgG2a
轻链类型	kappa

应用

Our [Abpromise guarantee](#) covers the use of **ab91259** in the following tested applications.

The application notes include recommended starting dilutions; optimal dilutions/concentrations should be determined by the end user.

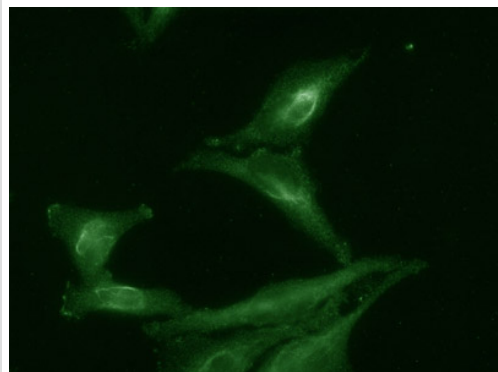
应用	Ab评论	说明
IHC-P		Use at an assay dependent concentration.
IHC-Fr		Use at an assay dependent concentration.

应用	Ab评论	说明
WB		Use a concentration of 1 µg/ml. Predicted molecular weight: 38 kDa.
IP		Use at an assay dependent concentration.
ELISA		Use at an assay dependent concentration.
ICC/IF		1/1000.

靶标

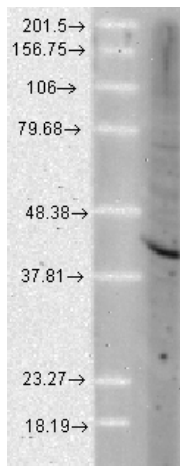
功能	Cochaperone that stimulates HSP90 ATPase activity (By similarity). May affect a step in the endoplasmic reticulum to Golgi trafficking.
组织特异性	Expressed in numerous tissues, including brain, heart, skeletal muscle and kidney and, at lower levels, liver and placenta.
序列相似性	Belongs to the AHA1 family.
细胞定位	Cytoplasm > cytosol. Endoplasmic reticulum. May transiently interact with the endoplasmic reticulum.

图片



Immunocytochemistry/ Immunofluorescence - Anti-AHA1 antibody [25F2.D9] (ab91259)

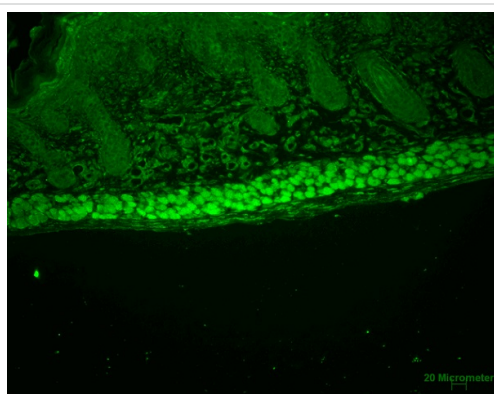
ab91259 staining AHA1 in HeLa cells by ICC/IF (Immunocytochemistry/immunofluorescence). Cells were fixed with 4% PFA for 20 minutes at room temperature. Samples were incubated with primary antibody (1/100) for 1 hour at room temperature. A Fluorescein-conjugated goat anti-rat IgG secondary antibody was used.



Western blot - Anti-AHA1 antibody [25F2.D9]
(ab91259)

Anti-AHA1 antibody [25F2.D9] (ab91259) at
1/1000 dilution + Human cell line lysate

Predicted band size: 38 kDa



Immunohistochemistry (Formalin/PFA-fixed paraffin-
embedded sections) - Anti-AHA1 antibody [25F2.D9]
(ab91259)

Paraffin-embedded mouse back skin tissue
stained for AHA1 using ab91259 at 1/100
dilution in immunohistochemical analysis.
Secondary antibody is FITC Goat Anti-Rat.



Immunoprecipitation - Anti-AHA1 antibody [25F2.D9]
(ab91259)

ab91259 used in the Immunoprecipitation of
AHA1 from Human Hela cells. The antibody
was used at 20µl per 1 ml of cell lysate (50mM
Tris (pH 7.2); 150mM NaCl; 1mM MgCl₂; 1%
TX-100; protease inhibitors); captured on 20µl
of protein G beads .

Please note: All products are "FOR RESEARCH USE ONLY AND ARE NOT INTENDED FOR DIAGNOSTIC OR THERAPEUTIC USE"

Our Abpromise to you: Quality guaranteed and expert technical support

- Replacement or refund for products not performing as stated on the datasheet
- Valid for 12 months from date of delivery
- Response to your inquiry within 24 hours

- We provide support in Chinese, English, French, German, Japanese and Spanish
- Extensive multi-media technical resources to help you
- We investigate all quality concerns to ensure our products perform to the highest standards

If the product does not perform as described on this datasheet, we will offer a refund or replacement. For full details of the Abpromise, please visit <http://www.abcam.cn/abpromise> or contact our technical team.

Terms and conditions

- Guarantee only valid for products bought direct from Abcam or one of our authorized distributors