

Product datasheet

Anti-AFAP1L2 antibody ab106433

3 图像

概述

产品名称	Anti-AFAP1L2抗体
描述	兔多克隆抗体to AFAP1L2
宿主	Rabbit
经测试应用	适用于: ICC/IF, IHC-P, WB
种属反应性	与反应: Mouse, Rat, Human
免疫原	A 15 amino acid synthetic peptide near the C terminus of Human AFAP1L2 (NP_001001936).
阳性对照	WB: Mouse liver tissue lysate IHC-P: Human liver tissue

性能

形式	Liquid
存放说明	Shipped at 4°C. Store at 4°C (stable for up to 12 months).
存储溶液	Preservative: 0.02% Sodium Azide Constituents: PBS
纯度	Immunogen affinity purified
克隆	多克隆
同种型	IgG

应用

Our [Abpromise guarantee](#) covers the use of **ab106433** in the following tested applications.

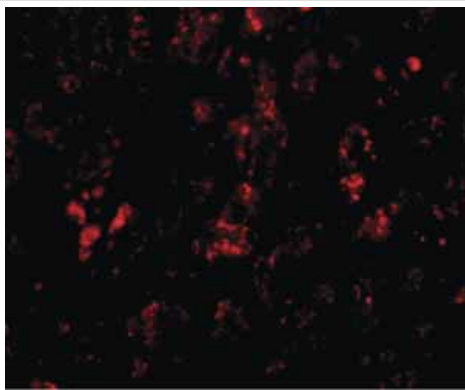
The application notes include recommended starting dilutions; optimal dilutions/concentrations should be determined by the end user.

应用	Ab评论	说明
ICC/IF		Use a concentration of 20 µg/ml.
IHC-P		Use a concentration of 2.5 µg/ml.
WB		Use a concentration of 1 - 2 µg/ml. Predicted molecular weight: 91 kDa.

靶标

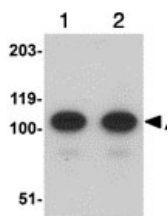
功能	May play a role in a signaling cascade by enhancing the kinase activity of SRC. Contributes to SRC-regulated transcription activation.
组织特异性	Detected in spleen and thyroid, and at lower levels in kidney, brain, lung and pancreas.
序列相似性	Contains 2 PH domains.
翻译后修饰	Tyrosine phosphorylated (by SRC).
细胞定位	Cytoplasm.

图片



Immunofluorescence of AFAP1L2 in Human liver tissue with ab106433 at 20 µg/mL.

Immunocytochemistry/ Immunofluorescence - Anti-AFAP1L2 antibody (ab106433)



Lane 1 : Anti-AFAP1L2 antibody (ab106433) at 1 µg/ml

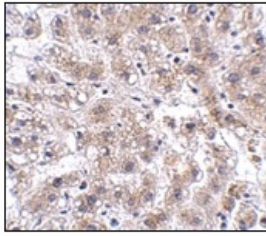
Lane 2 : Anti-AFAP1L2 antibody (ab106433) at 2 µg/ml

All lanes : Mouse liver tissue lysate

Lysates/proteins at 15 µg per lane.

Predicted band size: 91 kDa

Western blot - AFAP1L2 antibody (ab106433)



ab106433, at 2.5 $\mu\text{g/ml}$, staining AFAP1L2 in paraffin embedded Human liver tissue by Immunohistochemistry.

Immunohistochemistry (Formalin/PFA-fixed paraffin-embedded sections) - AFAP1L2 antibody (ab106433)

Please note: All products are "FOR RESEARCH USE ONLY AND ARE NOT INTENDED FOR DIAGNOSTIC OR THERAPEUTIC USE"

Our Abpromise to you: Quality guaranteed and expert technical support

- Replacement or refund for products not performing as stated on the datasheet
- Valid for 12 months from date of delivery
- Response to your inquiry within 24 hours
- We provide support in Chinese, English, French, German, Japanese and Spanish
- Extensive multi-media technical resources to help you
- We investigate all quality concerns to ensure our products perform to the highest standards

If the product does not perform as described on this datasheet, we will offer a refund or replacement. For full details of the Abpromise, please visit <http://www.abcam.cn/abpromise> or contact our technical team.

Terms and conditions

- Guarantee only valid for products bought direct from Abcam or one of our authorized distributors