

Product datasheet

Anti-AE2 antibody ab42687

★★★★☆ 2 Abreviews 2 References 1 图像


概述

产品名称

Anti-AE2抗体

描述

兔多克隆抗体to AE2

 该产品是 **快线抗体**，通过亲和纯化得到。对抗原肽有高灵敏度及特异性 (ELISA测试)。

[Read the terms of use »](#)

宿主

Rabbit

种属反应性

与反应: Mouse, Rat, Human

预测可用于: Rabbit, Horse, Guinea pig, Cow, Orangutan 

免疫原

Synthetic peptide derived from within residues 200 - 300 of Human AE2. 参阅Abcam的专有抗源政策(Peptide available as [ab42686](#).)

阳性对照

This antibody gave a positive signal when tested on MCF7 cells in IF

性能

形式

Liquid

存放说明

Shipped at 4°C. Store at +4°C short term (1-2 weeks). Upon delivery aliquot. Store at -20°C or -80°C. Avoid freeze / thaw cycle.

存储溶液

Preservative: 0.02% Sodium Azide
Constituents: 1% BSA, PBS, pH 7.4

纯度

Immunogen affinity purified

克隆

多克隆

同种型

IgG

应用

Fast track antibodies constitute a diverse group of products that have been released to accelerate your research, but are not yet fully characterized. They have all been affinity purified and show high titre values against the immunizing peptide (by ELISA).

[Fast track terms of use](#)

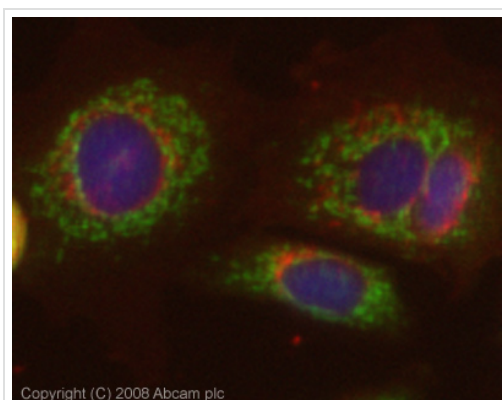
应用	Ab评论	说明
ICC/IF		Use at an assay dependent concentration.
IHC-FoFr		Use at an assay dependent concentration. PubMed: 21705333

靶标

功能	Plasma membrane anion exchange protein of wide distribution.
序列相似性	Belongs to the anion exchanger (TC 2.A.31) family.
细胞定位	Membrane.

图片

This Fast-Track antibody is not yet fully characterised. These images represent **inconclusive preliminary data**.



Immunocytochemistry/ Immunofluorescence - AE2 antibody (ab42687)

ICC/IF image of ab42687 stained MCF7 cells.

The cells were 100% methanol fixed (5 min), permabilised in 0.1% PBS-Tween (20 min) and incubated with the antibody (ab42687, 5µg/ml) for 1h at room temperature. 1%BSA / 10% normal goat serum / 0.3M glycine was used to block non-specific protein-protein interactions. The secondary antibody (green) was Alexa Fluor® 488 goat anti-rabbit IgG (H+L) used at a 1/1000 dilution for 1h. Alexa Fluor® 594 WGA was used to label plasma membranes (red). DAPI was used to stain the cell nuclei (blue). This antibody also gave a positive IF result in Hek293 cells fixed in 100% methanol at 5ug/ml. However, this Fast-Track antibody is not yet fully characterised. This image represents inconclusive preliminary data.

Please note: All products are "FOR RESEARCH USE ONLY AND ARE NOT INTENDED FOR DIAGNOSTIC OR THERAPEUTIC USE"

Terms and conditions

- Guarantee only valid for products bought direct from Abcam or one of our authorized distributors