


Product datasheet

Anti-ABCB6 antibody ab47837

1 图像

概述

<b>产品名称</b>	Anti-ABCB6抗体
<b>描述</b>	兔多克隆抗体to ABCB6
<b>宿主</b>	Rabbit
<b>经测试应用</b>	<b>适用于:</b> ICC/IF, ELISA, WB
<b>种属反应性</b>	<b>与反应:</b> Human <b>预测可用于:</b> Mouse, Rat 
<b>免疫原</b>	Synthetic peptide: RAMNTQENATRARAVD , corresponding to internal sequence amino acids 440-455 of Human ABCB6 <a href="#">Run BLAST with</a> <a href="#">Run BLAST with</a>
<b>阳性对照</b>	KB cells transfected with the ABCB6 protein.

性能

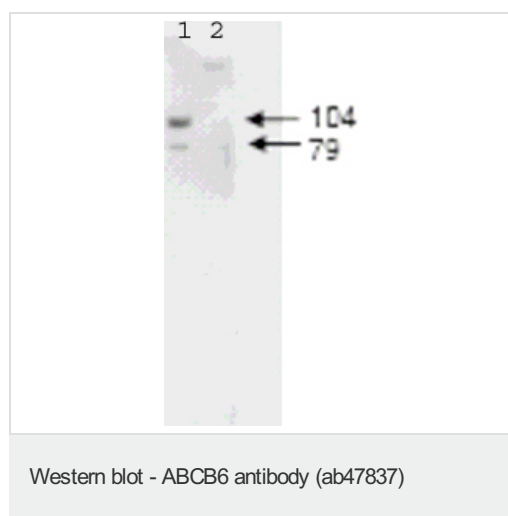
<b>形式</b>	Liquid
<b>存放说明</b>	Shipped at 4°C. Upon delivery aliquot and store at -20°C or -80°C. Avoid repeated freeze / thaw cycles.
<b>存储溶液</b>	Preservative: 0.01% Sodium Azide Constituents: 0.15M Sodium chloride, 0.02M Potassium phosphate, pH 7.2
<b>纯度</b>	Immunogen affinity purified
<b>克隆</b>	多克隆
<b>同种型</b>	IgG

应用

Our [Abpromise guarantee](#) covers the use of **ab47837** in the following tested applications.  
The application notes include recommended starting dilutions; optimal dilutions/concentrations should be determined by the end user.

应用	Ab评论	说明
ICC/IF		
ELISA		
WB		
<b>应用说明</b>	ELISA: 1/40000 - 1/200000. IF (microscopy): Use at an assay dependent dilution. WB: 1/1000 - 1/5000. Predicted molecular weight: 93 kDa.	
	Not yet tested in other applications. Optimal dilutions/concentrations should be determined by the end user.	
<b>靶标</b>		
<b>功能</b>	Binds heme and porphyrins and functions in their ATP-dependent uptake into the mitochondria. Plays a crucial role in heme synthesis.	
<b>组织特异性</b>	Widely expressed. Highest expression in heart and skeletal muscles.	
<b>序列相似性</b>	Belongs to the ABC transporter superfamily. ABCB family. Heavy Metal importer (TC 3.A.1.210) subfamily. Contains 1 ABC transmembrane type-1 domain. Contains 1 ABC transporter domain.	
<b>发展阶段</b>	Highly expressed in fetal liver.	
<b>细胞定位</b>	Mitochondrion outer membrane.	

## 图片



**All lanes :** Anti-ABCB6 antibody (ab47837)  
at 1/1400 dilution

**Lane 1 :** KB cell lysate expressing Flag™-tagged human ABCB6 protein

**Lane 2 :** KB cell lysate without a vector insert

**Predicted band size:** 93 kDa

**Observed band size:** 104 kDa

**Additional bands at:** 79 kDa (possible truncated form)

**Please note:** All products are "FOR RESEARCH USE ONLY AND ARE NOT INTENDED FOR DIAGNOSTIC OR THERAPEUTIC USE"

## **Our Abpromise to you: Quality guaranteed and expert technical support**

---

- Replacement or refund for products not performing as stated on the datasheet
- Valid for 12 months from date of delivery
- Response to your inquiry within 24 hours
  
- We provide support in Chinese, English, French, German, Japanese and Spanish
- Extensive multi-media technical resources to help you
- We investigate all quality concerns to ensure our products perform to the highest standards

If the product does not perform as described on this datasheet, we will offer a refund or replacement. For full details of the Abpromise, please visit <http://www.abcam.cn/abpromise> or contact our technical team.

## **Terms and conditions**

---

- Guarantee only valid for products bought direct from Abcam or one of our authorized distributors