

## Product datasheet

# Anti-15 Lipoxygenase 2 antibody ab23691

★★★★★ 3 Abreviews 1 References 3 图像

### 概述

产品名称	Anti-15 Lipoxygenase 2抗体
描述	兔多克隆抗体to 15 Lipoxygenase 2
宿主	Rabbit
经测试应用	适用于: IHC-Fr, ICC/IF, WB, ICC
种属反应性	与反应: Human 不与反应: Rabbit, Pig
免疫原	Synthetic peptide: CLDEKTVEDLELNKYSTA , corresponding to amino acids 163-181 of Human 15 Lipoxygenase 2. <a href="#">Run BLAST with</a> <a href="#">Run BLAST with</a>
阳性对照	Human prostate homogenate.

### 性能

形式	Liquid
存放说明	Shipped at 4°C. Upon delivery aliquot and store at -20°C. Avoid freeze / thaw cycles.
存储溶液	Preservative: 0.02% Sodium Azide Constituents: 50% Glycerol, 0.1% BSA, Tris buffered saline, pH 7.4
纯度	Immunogen affinity purified
纯化说明	This antibody was affinity purified.
克隆	多克隆
同种型	IgG

### 应用

Our [Abpromise guarantee](#) covers the use of **ab23691** in the following tested applications.

The application notes include recommended starting dilutions; optimal dilutions/concentrations should be determined by the end user.

应用	Ab评论	说明
IHC-Fr	★★★★★	
ICC/IF	★★★★★	
WB		
ICC		

#### 应用说明

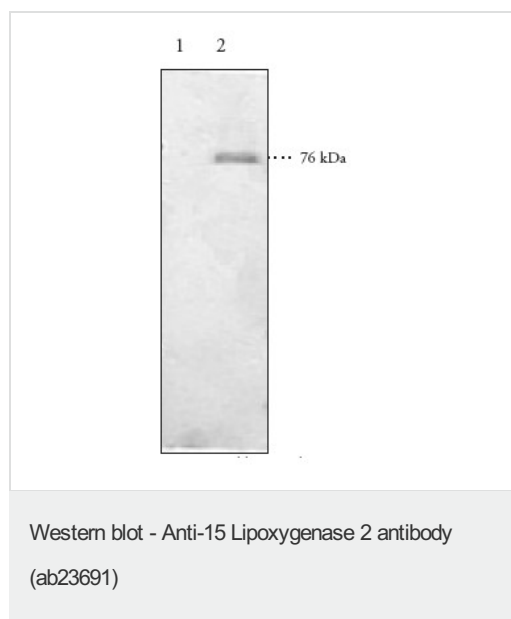
ICC: Use at a concentration of 6 µg/ml or 1:100  
 WB: Use at a concentration of 3 µg/ml or 1:200. Predicted molecular weight: 76 kDa.

Not yet tested in other applications.  
 Optimal dilutions/concentrations should be determined by the end user.

#### 靶标

功能	Converts arachidonic acid exclusively to 15S-hydroperoxyeicosatetraenoic acid, while linoleic acid is less well metabolized.
组织特异性	Expressed in hair, prostate, lung and cornea.
通路	Lipid metabolism; leukotriene D4 biosynthesis.
序列相似性	Belongs to the lipoxygenase family. Contains 1 lipoxygenase domain. Contains 1 PLAT domain.
细胞定位	Cytoplasm.

#### 图片



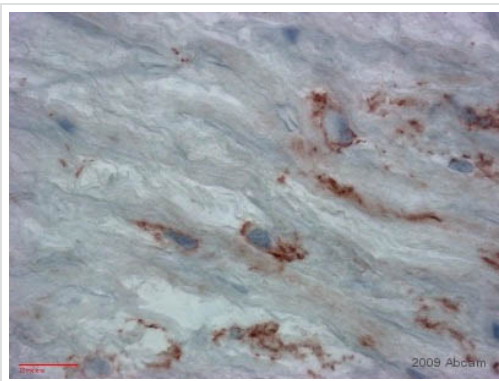
**All lanes :** Anti-15 Lipoxygenase 2 antibody (ab23691) at 4 µg/ml

**Lane 1 :** Rabbit reticulocyte lysate (30 µg).

**Lane 2 :** Human prostate homogenate (30 µg).

**Predicted band size:** 76 kDa

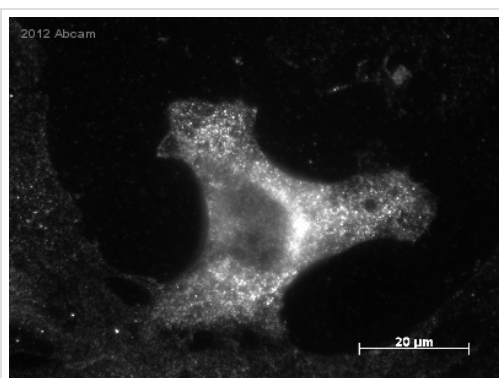
**Observed band size:** 76 kDa



Immunohistochemistry (Frozen sections) - Anti-15  
Lipoxygenase 2 antibody (ab23691)

This image is courtesy of an anonymous Abreview

ab23691 staining 15 Lipoxygenase 2 in human artery tissue sections by IHC-Fr (frozen sections). Tissue samples were fixed with acetone and blocked with 0.5% BSA for 10 minutes. Samples were incubated with primary antibody 1/100 24 hours. A biotin-conjugated horse anti Rabbit IgG (H+L) polyclonal (7 µg/ml) was used as secondary antibody.



Immunocytochemistry/ Immunofluorescence - Anti-  
15 Lipoxygenase 2 antibody (ab23691)

This image is courtesy of an anonymous Abreview

Immunofluorescence analysis of murine embryonic fibroblasts, staining 15 Lipoxygenase 2 with ab23691.

Cells were fixed with paraformaldehyde, permeabilized with 0.2 % Triton-X-100 and blocked with 2% BSA for 1 hour at 20°C. Samples were incubated with primary antibody (1/100 in 1% BSA in TBST) for 16 hours at 4°C. An AlexaFluor@488-conjugated chicken anti-rabbit polyclonal IgG (1/2000) was used as the secondary antibody.

**Please note:** All products are "FOR RESEARCH USE ONLY AND ARE NOT INTENDED FOR DIAGNOSTIC OR THERAPEUTIC USE"

### Our Abpromise to you: Quality guaranteed and expert technical support

- Replacement or refund for products not performing as stated on the datasheet
- Valid for 12 months from date of delivery
- Response to your inquiry within 24 hours
- We provide support in Chinese, English, French, German, Japanese and Spanish
- Extensive multi-media technical resources to help you
- We investigate all quality concerns to ensure our products perform to the highest standards

If the product does not perform as described on this datasheet, we will offer a refund or replacement. For full details of the Abpromise, please visit <http://www.abcam.cn/abpromise> or contact our technical team.

### Terms and conditions

- Guarantee only valid for products bought direct from Abcam or one of our authorized distributors